

# PRODUCT INFORMATION PACKET



Model No: C035

Catalog No: C035

OEM Replacement Motor, 1/6 HP, 1 Ph, 60 Hz, 230 V, 900 RPM, J56Z Frame, TEAO



Regal and Century are trademarks of Regal Rexnord Corporation or one of its affiliated companies.

©2023 Regal Rexnord Corporation, All Rights Reserved. MC017097E





**Nameplate Specifications**

Output HP	1/6 Hp	Output KW	0.13 kW
Frequency	60 Hz	Voltage	230 V
Current	1.6 A	Speed	800 rpm
Service Factor	1	Phase	1
Duty	Continuous	Insulation Class	B
Frame	J56Z	Enclosure	Totally Enclosed Air Over
Thermal Protection	Thermally Protected	Ambient Temperature	40 °C
UL	Recognized	CSA	Y
CE	N	Number of Speeds	1

**Technical Specifications**

Electrical Type	Permanent Split Capacitor, Single Or Dual Voltage	Starting Method	Across The Line
Poles	8	Rotation	Clockwise
Mounting	Cushion Base	Drive End Bearing	Ball
Opp Drive End Bearing	Ball	Frame Material	Rolled Steel
Shaft Type	Special Extension	Overall Length	49.26 in
Frame Length	5.13 in	Shaft Diameter	0.749 in
Shaft Extension	20.44 in		
Outline Drawing	C035-S01	Connection Drawing	17454221.PCX

This is an uncontrolled document once printed or downloaded and is subject to change without notice. Date Created:03/15/2023

TYPE	FRAME
CX	J56Z

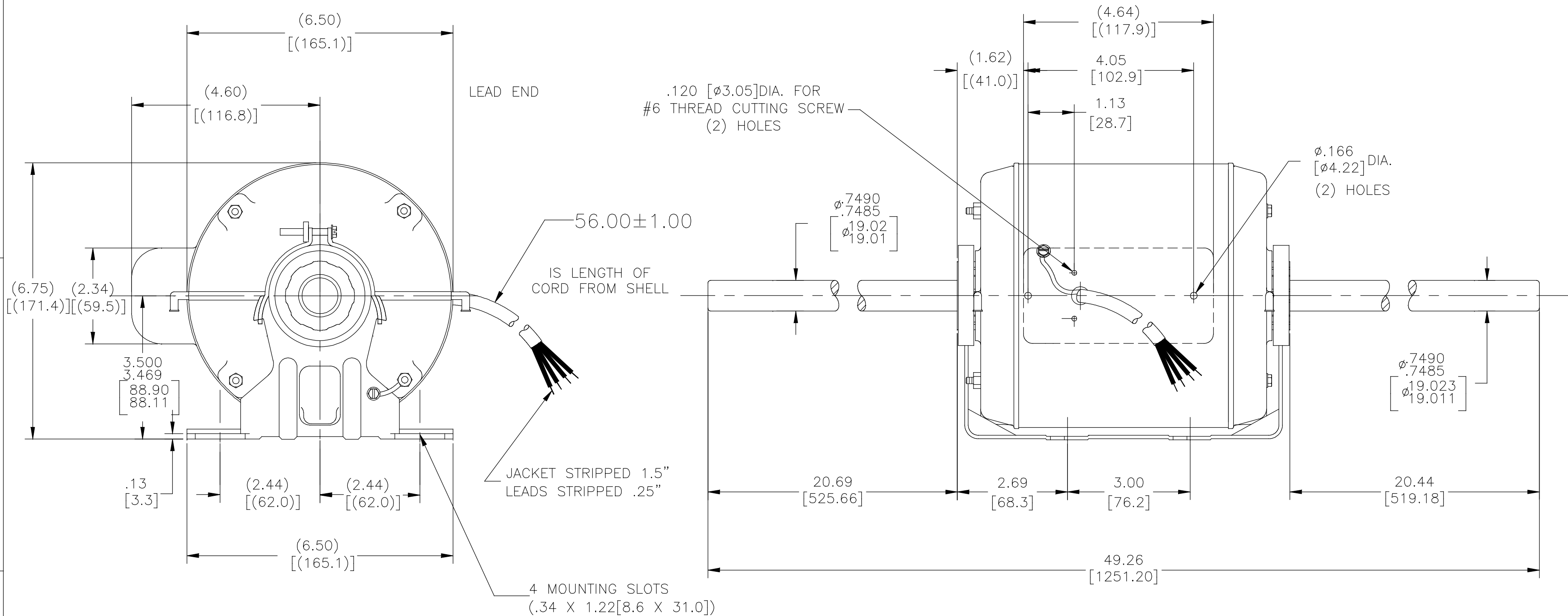
NOTES:

RUN OUT MUST NOT EXCEED .005 [.13] T.I.R.  
WHEN MEASURED 1.0 [25] INCH FROM END OF SHAFT.

SHAFT AND BASE TO BE PARALLEL +/- .0625 [1.588]  
WHEN MEASURED 1.0 [25] INCH FROM END OF SHAFT.

ALL DIMENSIONS SHOWN IN PARENTHSEIS  
ARE REFERENCE DIMENSIONS. ALL  
OTHER DIMENSIONS ARE TOLERANCED PER  
THE FOLLOWING CHART UNLESS  
OTHERWISE SPECIFIED.

"C" DIM. = +/- .055  
SHAFT EXT. = +/- .034  
LEAD LENGTHS = +/- 1.00  
EXTENDED  
THRU-BOLTS = +/- .050  
ANGULAR DIMS. = +/- 2 DEGS.



DRAWING REVISION D	REVISION BY KHADHAR	DATE 03/28/2019	TOLERANCES UNLESS OTHERWISE SPECIFIED	DRAWN BY: BARPEA	Regal Beloit America, Inc.
ECO ECO-0164493	APPROVED BY SN	DATE 03/28/2019	DEC. INCH mm ANGLE .X ±0.1 [±2.5] ±0.5° .XX ±0.02 [±0.51] .XXX ±0.005 [±0.127] .XXXX ±0.0005 [±0.0127]	DATE: 08-11-2000	
ECO DESCRIPTION SEE ECO			REMOVE BURRS & BREAK SHARP EDGES .003/.015 [0.076/.381] X 45° CORNER FILLETS R.02 [5.1] MACHINED SURFACES 125/3.2 mm SHOWN IN [BRACKETS]	APPROVED BY:	DESCRIPTION 0056 SWG 0-LINE SB ENCL
<small>COPYRIGHT REGAL BELOIT AMERICA, INC. ALL RIGHTS RESERVED. PROPRIETARY AND CONFIDENTIAL INFORMATION - THIS DOCUMENT IS THE PROPERTY OF REGAL BELOIT AMERICA, INC. (OWNER) AND CONTAINS OWNER'S PROPRIETARY INFORMATION. ANY PERSON, CORPORATION OR OTHER FIRM RECEIVING IT IS DEEMED, BY RECEIVING IT, TO AGREE THAT IT, AND/OR ANY PART OF IT, SHALL NOT BE DISCLOSED TO ANY PERSON, CORPORATION OR OTHER ENTITY, DUPLICATED, AND/OR USED, EXCEPT AS EXPRESSLY APPROVED IN WRITING IN ADVANCE BY OWNER. THIS DOCUMENT SHALL BE RETURNED TO OWNER UPON REQUEST. IT MAY BE SUBJECT TO CERTAIN RESTRICTIONS UNDER APPLICABLE EXPORT CONTROL LAWS AND REGULATIONS.</small>				DATE:	MATERIAL
				REFERENCE	PROCESS/FINISH
				THIRD ANGLE PROJECTION	SIZE DWG NO C C035
					SHEET 1