

# PRODUCT INFORMATION PACKET



Model No: C031

Catalog No: C031

OEM Replacement Motor, 1/12 HP, 1 Ph, 60 Hz, 115 V, 900 RPM, J56Z Frame, TEAO



Regal and Century are trademarks of Regal Rexnord Corporation or one of its affiliated companies.

©2023 Regal Rexnord Corporation, All Rights Reserved. MC017097E





**Nameplate Specifications**

Output HP	1/12 Hp	Output KW	0.06 kW
Frequency	60 Hz	Voltage	115 V
Current	2.0 A	Speed	715 rpm
Service Factor	1	Phase	1
Duty	Continuous	Insulation Class	B
Frame	J56Z	Enclosure	Totally Enclosed Air Over
Thermal Protection	No Protection	Ambient Temperature	40 °C
UL	Recognized	CSA	Y
CE	N	Number of Speeds	1

**Technical Specifications**

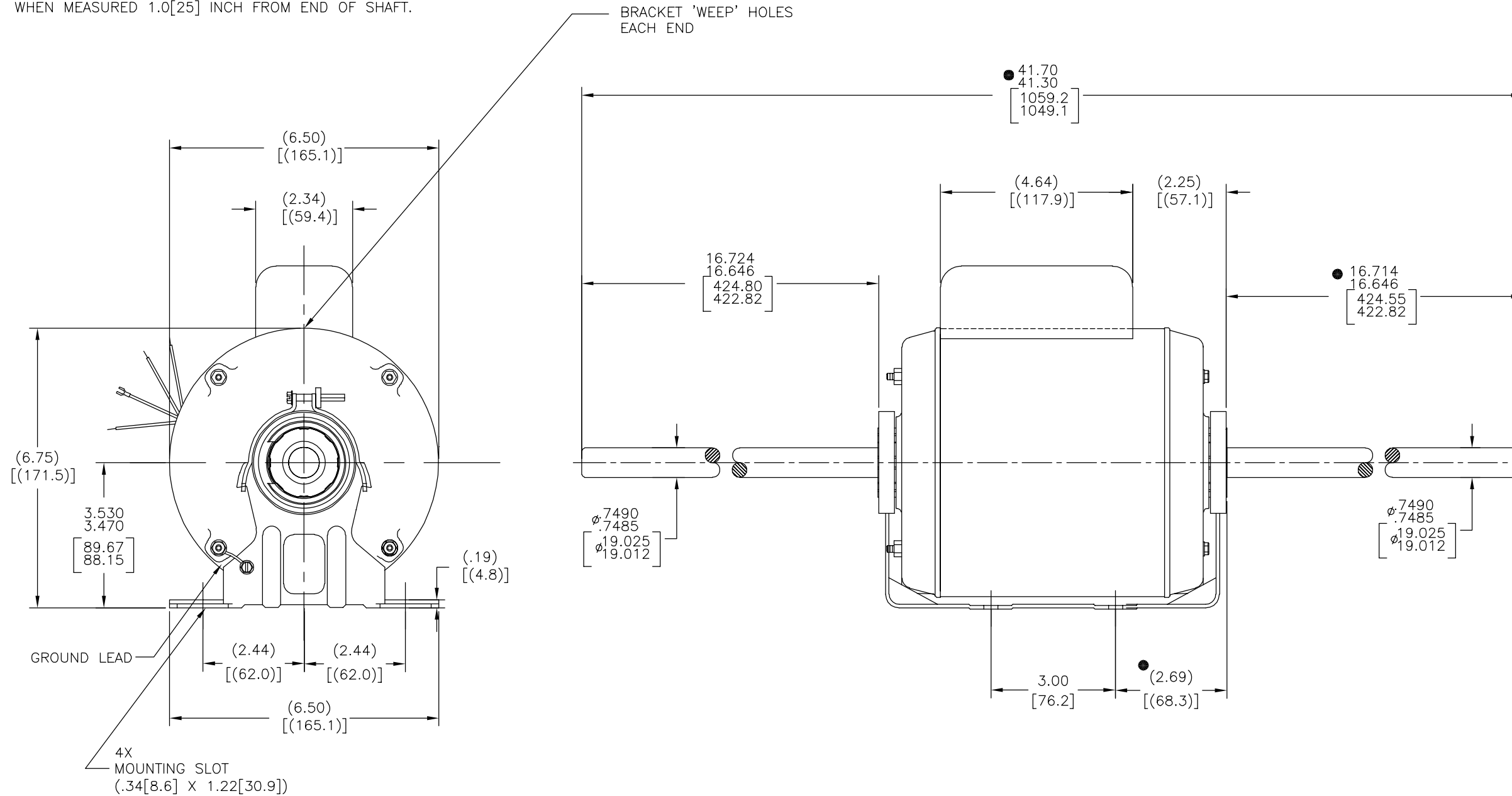
Electrical Type	Permanent Split Capacitor, Single Or Dual Voltage	Starting Method	Across The Line
Poles	8	Rotation	Reversible Counterclockwise
Mounting	Cushion Base	Drive End Bearing	Ball
Opp Drive End Bearing	Ball	Frame Material	Rolled Steel
Shaft Type	Special Extension	Overall Length	41.70 in
Frame Length	5.13 in	Shaft Diameter	0.749 in
Shaft Extension	16.71 in		
Connection Drawing	11536601	Outline Drawing	C031-S01

This is an uncontrolled document once printed or downloaded and is subject to change without notice. Date Created:03/15/2023

TYPE	FRAME SIZE
CX	J56Z

REV	ECO	REV BY	DATE	APPD	DATE
G	0039276	F.NAVARRO	10-10-2013	T.REYES	10-10-2013

- NOTES:
1. RUNOUT MUST NOT EXCEED .005[.125] T.I.R. WHEN MEASURED 1.0[25] INCH FROM END OF SHAFT.
  2. SHAFT AND BASE TO BE PARALLEL +/- .0625[1.588] WHEN MEASURED 1.0[25] INCH FROM END OF SHAFT.



GEOMETRIC CHARACTERISTICS & SYMBOLS

- ▭ FLATNESS
- STRAIGHTNESS
- ∠ ANGULARITY
- ⊥ PERPENDICULARITY (SQUARENESS)
- // PARALLELISM
- ROUNDNESS (CIRCULARITY)
- ⊘ CYLINDRICITY
- △ PROFILE OF ANY SURFACE
- ∩ PROFILE OF ANY LINE
- ↗ RUNOUT
- ⊕ TRUE POSITION
- ◎ CONCENTRICITY
- ≡ SYMMETRY

ASME Y14.5M 1994

UNLESS OTHERWISE SPECIFIED DIM. TOLERANCES ARE AS FOLLOWS:

INCH X XX XXX XXXX  
 mm ±0.5 ±0.13 ±0.013

ANG. ±.50 DEG

REMOVE BURRS & BREAK SHARP EDGES:  
 INCH .003-.015 mm 0.1-0.4

CORNER FILLETS TO:  
 INCH .020 mm 0.5

MACHINE SURFACES:  
 INCH 125 mm 3.2

METRIC DIMS. SHOWN IN [BRACKETS]

DR BY:	SVR	10-16-1996
APPD:	SAS	10-18-1996
THIRD ANGLE PROJECTION		EDS DATE 11-11-2011 FORMAT REV H
CONFIDENTIAL: THIS DRAWING AND ITS INFORMATION ARE THE EXCLUSIVE AND CONFIDENTIAL PROPERTY OF REGAL-BELOIT CORPORATION AND ARE NOT TO BE DISCLOSED, DUPLICATED, DISTRIBUTED OR OTHERWISE USED WITHOUT THE WRITTEN CONSENT OF REGAL-BELOIT CORPORATION. -ALL RIGHTS RESERVED.		

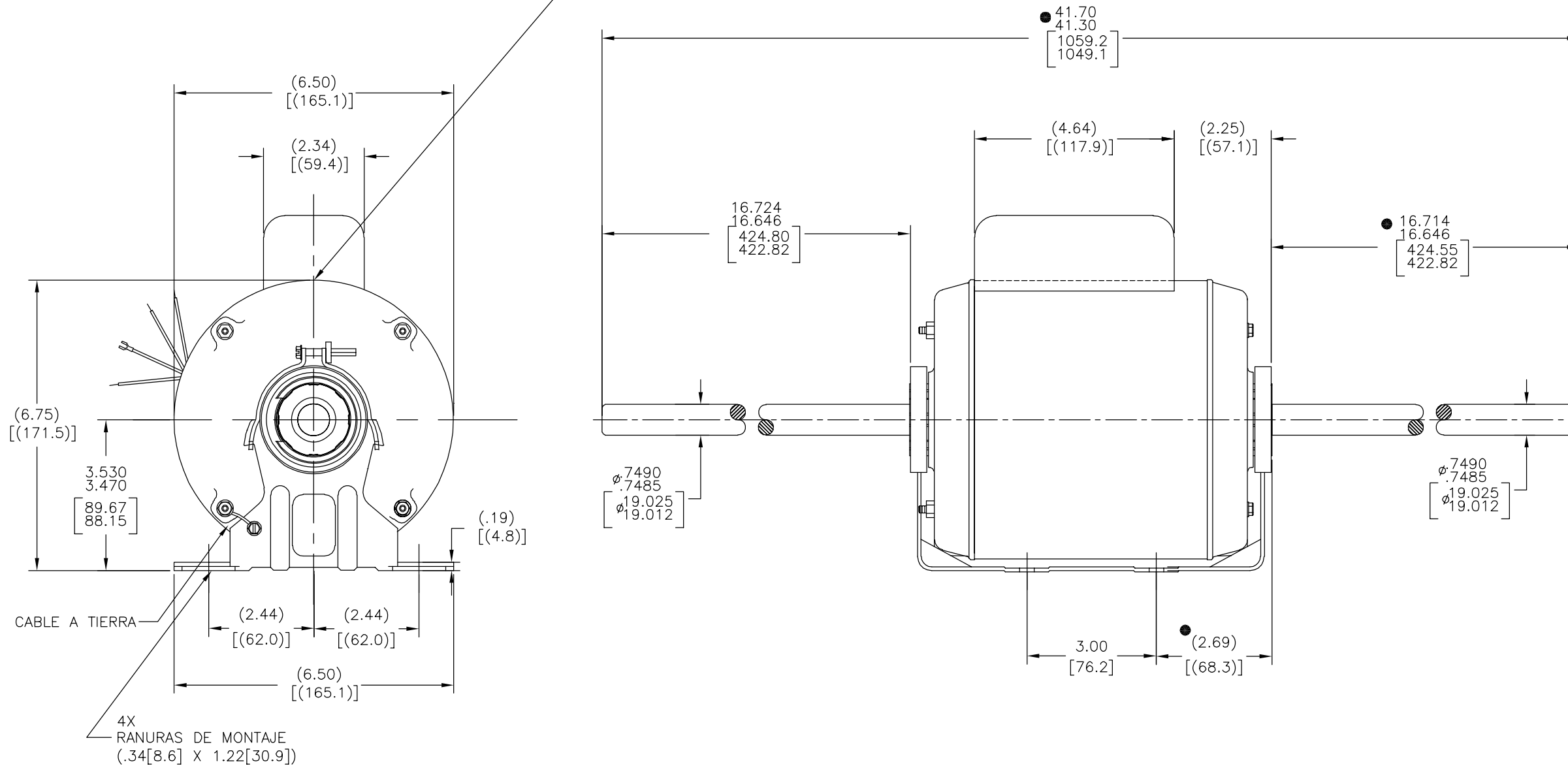
<b>REGAL-BELOIT CORPORATION</b>	
DESCRIPTION MODEL-CFHP-56FR OUTLINE	
SIZE C	DWG NO C031
SCALE NONE	SHEET 1

TIPO	TAMAÑO DE CARCASA
CX	J56Z

REVISION:	ECO	REVISADO POR:	FECHA:	APROBADO POR:	FECHA:
G	0039276	F.NAVARRO	10-10-2013	T.REYES	10-10-2013

- NOTAS:
1. LA OSCILACION DEL INDICADOR NO DEBE EXCEDER .005[.125] L.T.I. CUANDO MIDE 1.0[25] DE PULGADA DE LADO DE FLECHA.
  2. LA FLECHA Y BASE DEBEN SER PARALELAS +/- .0625[1.588] CUANDO MIDE 1.0[25] DE PULGADA DE LADO DE FLECHA.

ORIFICIOS DE SUPURACION DE LA TAPA EN CADA LADO



CARACTERISTICAS DE GEOMETRIA Y SIMBOLOS

- ▧ PLANICIDAD
- RECTITUD
- ∠ ANGULARIDAD
- ⊥ PERPENDICULARIDAD (A ESCUADRA)
- // PARALELISMO
- REDONDEZ (CIRCULARIDAD)
- ∅ CILINDRICIDAD
- △ PERFIL DE CUALQUIER SUPERFICIE
- ∩ PERFIL DE CUALQUIER LINEA
- ∠ VARIACION
- ⊕ POSICION REAL
- ◎ CONCENTRICIDAD
- = SIMETRIA

ASME Y14.5M 1994

A MENOS QUE SE ESPECIFIQUE DE OTRA MANERA, LAS TOLERANCIAS DE LAS DIMS; SON LAS SIGUIENTES:

	PULG	±.1	±.02	±.005	±.0005
	mm	±0.5	±0.13	±0.013	

ANG. ± 50 GRADOS  
ELIMINAR REBABAS Y ORILLAS FILOSAS DEL BORDE.  
PULG .003-.015 mm 0.1-0.4  
FILETEAR ESQUINA: PULG .020 mm 0.5  
MAQUINAR SUPERFICIES  
PULG 125 mm 3.2

DIMS METRICAS MOSTRADAS [PARENTESIS]

DIBUJADO POR:	SVR	10-16-1996
APROBADO POR:	SAS	10-18-1996
TERCER ANGULO DE PROYECCION	⊕	FECHA EDS: 11-11-2011 REV. FORMATO: H

CONFIDENCIAL: ESTE DIBUJO Y SU INFORMACION SON PROPIEDAD DE USO EXCLUSIVO Y CONFIDENCIAL DE REGAL-BELOIT CORPORATION. Y NO DEBERAN SER REVELADOS, DUPLICADOS, DISTRIBUIDOS O USARSE DE OTRA MANERA SIN EL CONSENTIMIENTO ESCRITO DE REGAL-BELOIT CORPORATION. -TODOS LOS DERECHOS RESERVADOS.

<b>REGAL REGAL-BELOIT CORPORATION</b>	
DESCRIPCION: MODEL-CFHP-56FR OUTLINE	
TAMAÑO: C	NUMERO DE DIBUJO: C031
ESCALA: NONE	HOJA: 1