

PRODUCT INFORMATION PACKET



Model No: BF1032

Catalog No: BF1032

1/3 HP Fan and Blower HVAC/R Motor, 1 phase, 3600 RPM, 115/208-230 V, 48 Frame, ODP
Fan and Blower Motors



Regal and Century are trademarks of Regal Rexnord Corporation or one of its affiliated companies.

©2021 Regal Rexnord Corporation, All Rights Reserved. MC017097E





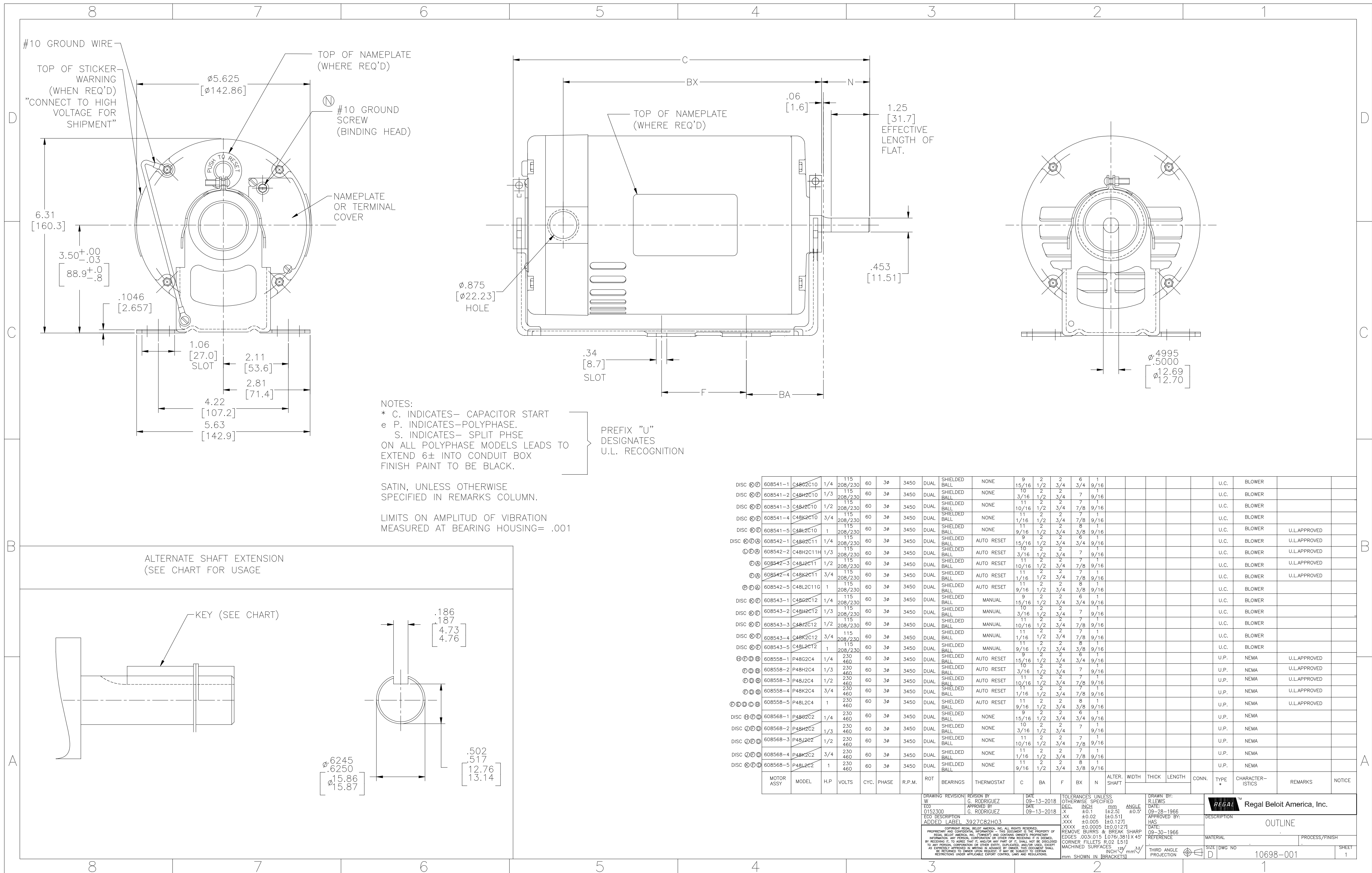
Nameplate Specifications

Output HP	1/3 Hp	Output KW	0.25 kW
Frequency	60 Hz	Voltage	115/208-230 V
Current	5.6/2.8 A	Speed	3450 rpm
Service Factor	1.8	Phase	1
Duty	Continuous	Insulation Class	A
Frame	48	Enclosure	Open Drip Proof
Thermal Protection	Automatic	Ambient Temperature	40 °C
UL	Recognized	CSA	Y
CE	N	Number of Speeds	1

Technical Specifications

Electrical Type	Capacitor Start	Starting Method	Across The Line
Poles	2	Rotation	Reversible
Mounting	Resilient Base	Drive End Bearing	Ball
Opp Drive End Bearing	Ball	Frame Material	Rolled Steel
Shaft Type	Flat	Overall Length	10.18 in
Frame Length	5.50 in	Shaft Diameter	0.625 in
Shaft Extension	1.56 in		
Connection Drawing	604797-013	Outline Drawing	10698-001

This is an uncontrolled document once printed or downloaded and is subject to change without notice. Date Created:10/07/2021



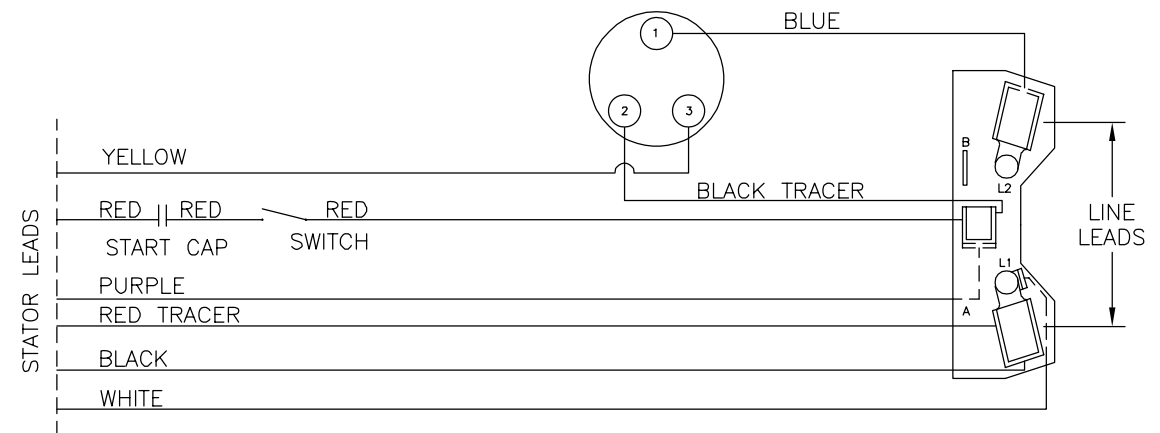
NOTES:
 * C. INDICATES- CAPACITOR START
 e P. INDICATES-POLYPHASE.
 S. INDICATES- SPLIT PHSE
 ON ALL POLYPHASE MODELS LEADS TO EXTEND 6± INTO CONDUIT BOX
 FINISH PAINT TO BE BLACK.
 PREFIX "U" DESIGNATES U.L. RECOGNITION

SATIN, UNLESS OTHERWISE SPECIFIED IN REMARKS COLUMN.
 LIMITS ON AMPLITUD OF VIBRATION MEASURED AT BEARING HOUSING= .001

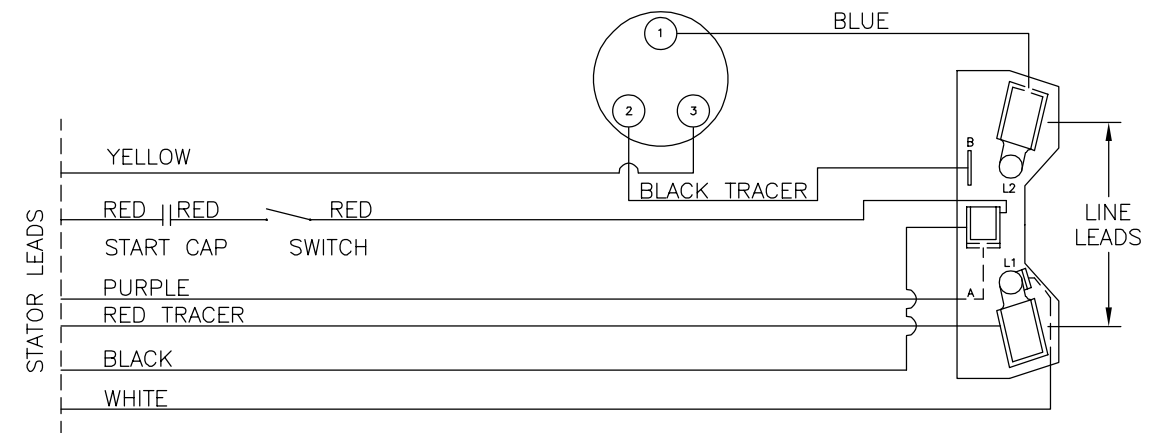
DISC	MODEL	H.P.	VOLTS	CYC.	PHASE	R.P.M.	ROT	BEARINGS	THERMOSTAT	C	BA	F	BX	N	ALTER. SHAFT	WIDTH	THICK	LENGTH	CONN.	TYPE *	CHARACTERISTICS	REMARKS	NOTICE
DISC	608541-1	C48G2C10	1/4	115	60	3Ø	3450	DUAL	SHIELDED BALL	NONE	15/16	1/2	2	3/4	9/16					U.C.	BLOWER		
DISC	608541-2	C48H2C10	1/3	115	60	3Ø	3450	DUAL	SHIELDED BALL	NONE	3/16	1/2	2	3/4	7/8					U.C.	BLOWER		
DISC	608541-3	C48J2C10	1/2	115	60	3Ø	3450	DUAL	SHIELDED BALL	NONE	10/16	1/2	2	3/4	7/8					U.C.	BLOWER		
DISC	608541-4	C48K2C10	3/4	115	60	3Ø	3450	DUAL	SHIELDED BALL	NONE	1/16	1/2	2	3/4	7/8					U.C.	BLOWER		
DISC	608541-5	C48L2C10	1	115	60	3Ø	3450	DUAL	SHIELDED BALL	NONE	11	2	2	3/4	3/8					U.C.	BLOWER	U.L. APPROVED	
DISC	608542-1	C48B2C11	1/4	115	60	3Ø	3450	DUAL	SHIELDED BALL	AUTO RESET	15/16	1/2	2	3/4	3/4					U.C.	BLOWER	U.L. APPROVED	
DISC	608542-2	C48H2C11H	1/3	115	60	3Ø	3450	DUAL	SHIELDED BALL	AUTO RESET	3/16	1/2	2	3/4	7/8					U.C.	BLOWER	U.L. APPROVED	
DISC	608542-3	C48J2C11	1/2	115	60	3Ø	3450	DUAL	SHIELDED BALL	AUTO RESET	10/16	1/2	2	3/4	7/8					U.C.	BLOWER	U.L. APPROVED	
DISC	608542-4	C48K2C11	3/4	115	60	3Ø	3450	DUAL	SHIELDED BALL	AUTO RESET	1/16	1/2	2	3/4	7/8					U.C.	BLOWER	U.L. APPROVED	
DISC	608542-5	C48L2C11G	1	115	60	3Ø	3450	DUAL	SHIELDED BALL	AUTO RESET	9	2	2	3/4	3/8					U.C.	BLOWER		
DISC	608543-1	C48G2C12	1/4	115	60	3Ø	3450	DUAL	SHIELDED BALL	MANUAL	15/16	1/2	2	3/4	3/4					U.C.	BLOWER		
DISC	608543-2	C48H2C12	1/3	115	60	3Ø	3450	DUAL	SHIELDED BALL	MANUAL	3/16	1/2	2	3/4	7/8					U.C.	BLOWER		
DISC	608543-3	C48J2C12	1/2	115	60	3Ø	3450	DUAL	SHIELDED BALL	MANUAL	10/16	1/2	2	3/4	7/8					U.C.	BLOWER		
DISC	608543-4	C48K2C12	3/4	115	60	3Ø	3450	DUAL	SHIELDED BALL	MANUAL	1/16	1/2	2	3/4	7/8					U.C.	BLOWER		
DISC	608543-5	C48L2C12	1	115	60	3Ø	3450	DUAL	SHIELDED BALL	MANUAL	9/16	1/2	2	3/4	3/8					U.C.	BLOWER		
DISC	608558-1	P48G2C4	1/4	230	60	3Ø	3450	DUAL	SHIELDED BALL	AUTO RESET	15/16	1/2	2	3/4	3/4					U.P.	NEMA	U.L. APPROVED	
DISC	608558-2	P48H2C4	1/3	230	60	3Ø	3450	DUAL	SHIELDED BALL	AUTO RESET	10	2	2	3/4	7/8					U.P.	NEMA	U.L. APPROVED	
DISC	608558-3	P48J2C4	1/2	230	60	3Ø	3450	DUAL	SHIELDED BALL	AUTO RESET	11	2	2	3/4	7/8					U.P.	NEMA	U.L. APPROVED	
DISC	608558-4	P48K2C4	3/4	230	60	3Ø	3450	DUAL	SHIELDED BALL	AUTO RESET	1/16	1/2	2	3/4	7/8					U.P.	NEMA	U.L. APPROVED	
DISC	608558-5	P48L2C4	1	230	60	3Ø	3450	DUAL	SHIELDED BALL	AUTO RESET	11	2	2	3/4	3/8					U.P.	NEMA	U.L. APPROVED	
DISC	608568-1	P48B2C2	1/4	230	60	3Ø	3450	DUAL	SHIELDED BALL	NONE	15/16	1/2	2	3/4	3/4					U.P.	NEMA		
DISC	608568-2	P48H2C2	1/3	230	60	3Ø	3450	DUAL	SHIELDED BALL	NONE	3/16	1/2	2	3/4	7/8					U.P.	NEMA		
DISC	608568-3	P48J2C2	1/2	230	60	3Ø	3450	DUAL	SHIELDED BALL	NONE	10/16	1/2	2	3/4	7/8					U.P.	NEMA		
DISC	608568-4	P48K2C2	3/4	230	60	3Ø	3450	DUAL	SHIELDED BALL	NONE	1/16	1/2	2	3/4	7/8					U.P.	NEMA		
DISC	608568-5	P48L2C2	1	230	60	3Ø	3450	DUAL	SHIELDED BALL	NONE	9/16	1/2	2	3/4	3/8					U.P.	NEMA		

DRAWING REVISION: W 0152300, DISC DESCRIPTION: 3927C82H03, DATE: 09-13-2018, APPROVED BY: G. RODRIGUEZ, TOLERANCES UNLESS OTHERWISE SPECIFIED: DISC INCH ±0.1, mm ±0.25, ANGLE ±0.5°, REMOVE BURRS & BREAK SHARP EDGES .003/.015 1076/3611X45° CORNER FILLETS R.02 [L51] MACHINED SURFACES: .02 INCH / .51 mm, THIRD ANGLE PROJECTION, DRAWN BY: R. LEWIS, DATE: 09-28-1966, APPROVED BY: HAS, DATE: 09-30-1966, REFERENCE: MATERIAL: PROCESS/FINISH: OUTLINE, REGAL Regal Beloit America, Inc., SIZE: DWG NO 10698-001, SHEET 1

REV	ECO	REV BY	DATE	APPD	DATE
B	0035301	J.AGUILERA	10-09-2013	D.BALDERRAMA	10-09-2013

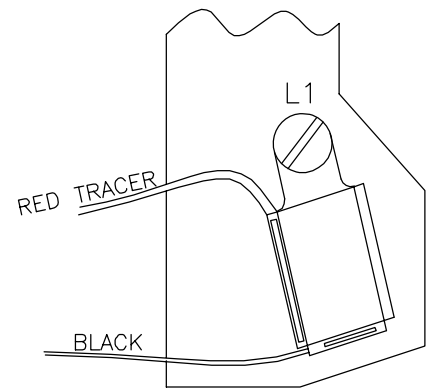


LOW VOLTS



HIGH VOLTS

NOTES:
1. ON LOW VOLTAGE CONNECTION STATOR LEADS TO BE LOCATED ON L1 TERMINAL AS SHOWN BELOW



PART NUMBER	RED L-T ASSY SWITCH TO TERM BD.	RED LEAD CAPACITOR TO SWITCH	BLUE L-T ASSY THST TO TERM BD	BLACK L-T ASSY THST TO TERM BD
604797-013	(058R18-NV-032-NV)	(058R18-FX-025-08)	(058BL18-NV-027-08)	(058BT18-HB-035-08)

GEOMETRIC CHARACTERISTICS & SYMBOLS

- ▭ FLATNESS
- STRAIGHTNESS
- ∠ ANGULARITY
- ⊥ PERPENDICULARITY (SQUARENESS)
- // PARALLELISM
- ROUNDNESS (CIRCULARITY)
- ⊘ CYLINDRICITY
- △ PROFILE OF ANY SURFACE
- ∩ PROFILE OF ANY LINE
- ↗ RUNOUT
- ⊕ TRUE POSITION
- ◎ CONCENTRICITY
- ≡ SYMMETRY

ASME Y14.5M 1994

UNLESS OTHERWISE SPECIFIED DIM. TOLERANCES ARE AS FOLLOWS:

INCH	±.1	±.02	±.005	±.0005
mm	±0.5	±0.13	±0.013	

ANG. ±.50 DEG
REMOVE BURRS & BREAK SHARP EDGES:
INCH .003-.015 mm 0.1-0.4
CORNER FILLETS TO:
INCH .020 mm 0.5
MACHINE SURFACES:
INCH 125 mm 3.2

METRIC DIMS. SHOWN IN [BRACKETS]

DR BY: CQ 07-28-1972

APPD:

THIRD ANGLE PROJECTION

EDS DATE 11-11-2011
FORMAT REV H

CONFIDENTIAL: THIS DRAWING AND ITS INFORMATION ARE THE EXCLUSIVE AND CONFIDENTIAL PROPERTY OF REGAL-BELOIT CORPORATION AND ARE NOT TO BE DISCLOSED, DUPLICATED, DISTRIBUTED OR OTHERWISE USED WITHOUT THE WRITTEN CONSENT OF REGAL-BELOIT CORPORATION. -ALL RIGHTS RESERVED.

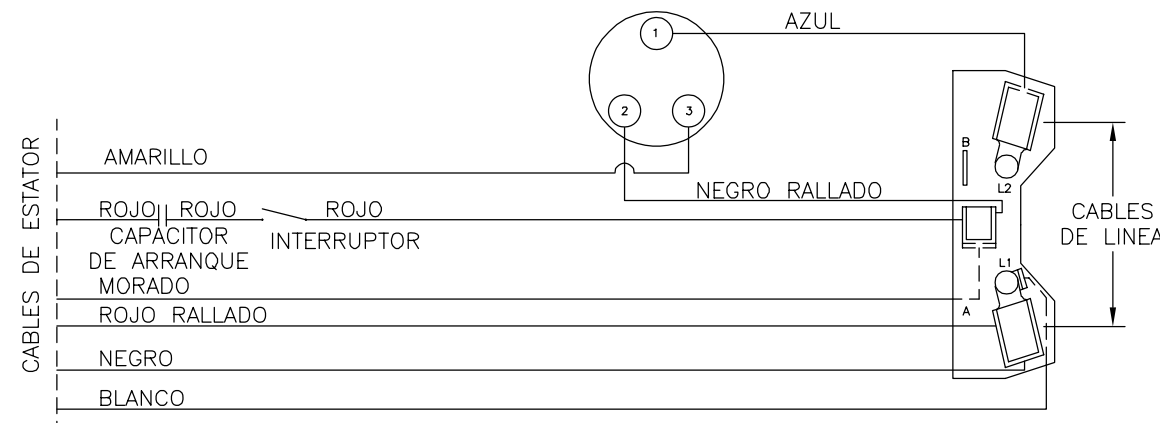
REGAL REGAL-BELOIT CORPORATION

DESCRIPTION
CONN DIAGRAM-EXTERNAL

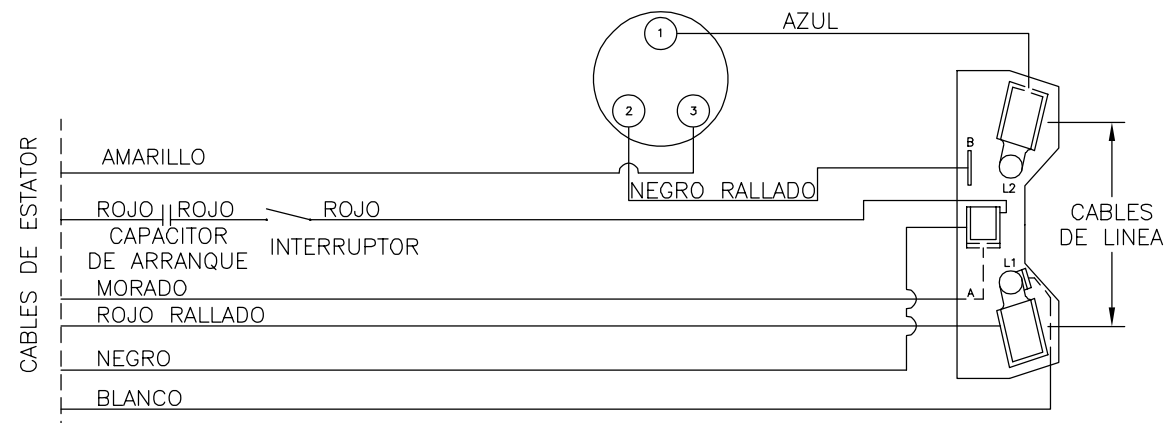
SIZE C DWG NO 604797-013

SCALE NONE SHEET 1

REVISION:	ECO	REVISADO POR:	FECHA:	APROBADO POR:	FECHA:
B	0035301	J.AGUILERA	10-09-2013	D.BALDERRAMA	10-09-2013

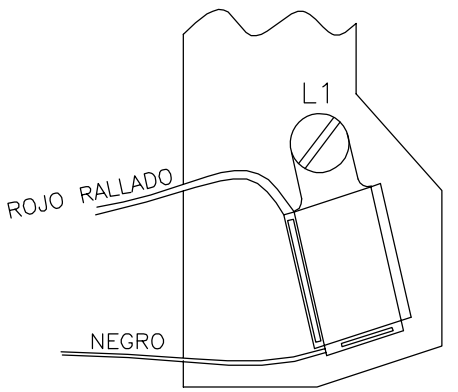


BAJO VOLTAJE



ALTO VOLTAJE

NOTAS:
 1. EN CONECCION DE BAJO VOLTAGE
 LOS CABLES DEL ESTATOR
 ESTARAN LOCALIZADOS
 EN LA TERMINAL L1 COMO
 SE MUESTRA ABAJO



NUMERO DE PARTE	ROJO L-T ENSAMBLE INTERRUPTOR A TABLILLA DE TERMINALES	CABLE ROJO DEL CAPACITOR AL INTERRUPTOR	AZUL L-T ENSAMBLE THST INTERRUPTOR A TABLILLA DE TERMINALES	NEGRO L-T ENSAMBLE THST A TABLILLA DE TERMINALES
604797-013	(058R18-NV-032-NV)	(058R18-FX-025-08)	(058BL18-NV-027-08)	(058BT18-HB-035-08)

CARACTERISTICAS DE GEOMETRIA Y SIMBOLOS
 ▤ PLANICIDAD
 - RECTITUD
 < ANGULARIDAD
 ⊥ PERPENDICULARIDAD (A ESCUADRA)
 // PARALELISMO
 ○ REDONDEZ (CIRCULARIDAD)
 ∅ CILINDRICIDAD
 △ PERFIL DE CUALQUIER SUPERFICIE
 ∩ PERFIL DE CUALQUIER LINEA
 / VARIACION
 ⊕ POSICION REAL
 ⊙ CONCENTRICIDAD
 = SIMETRIA
 ASME Y14.5M 1994

A MENOS QUE SE ESPECIFIQUE DE OTRA MANERA, LAS TOLERANCIAS DE LAS DIMS; SON LAS SIGUIENTES:
 PULG ±.1 ±.02 ±.005 ±.0005
 mm ±0.5 ±0.13 ±0.013
 ANG. ±50 GRADOS
 ELIMINAR REBABAS Y ORILLAS FILOSAS DEL BORDE.
 PULG .003-.015 mm 0.1-0.4
 FILETEAR ESQUINA: PULG .020 mm 0.5
 MAQUINAR SUPERFICIES
 PULG 125 mm 3.2
 DIMS METRICAS MOSTRADAS [PARENTESIS]

DIBUJADO POR: CQ 07-28-1972
 APROBADO POR:
 TERCER ANGULO DE PROYECCION
 FECHA EDS: 11-11-2011
 REV. FORMATO: H
 CONFIDENCIAL: ESTE DIBUJO Y SU INFORMACION SON PROPIEDAD DE USO EXCLUSIVO Y CONFIDENCIAL DE REGAL-BELOIT CORPORATION. Y NO DEBERAN SER REVELADOS, DUPLICADOS, DISTRIBUIDOS O USARSE DE OTRA MANERA SIN EL CONSENTIMIENTO ESCRITO DE REGAL-BELOIT CORPORATION. -TODOS LOS DERECHOS RESERVADOS.

REGAL REGAL-BELOIT CORPORATION

DESCRIPCION:
 CONN DIAGRAM-EXTERNAL

TAMAÑO: C NUMERO DE DIBUJO: 604797-013
 ESCALA: NONE HOJA: 1