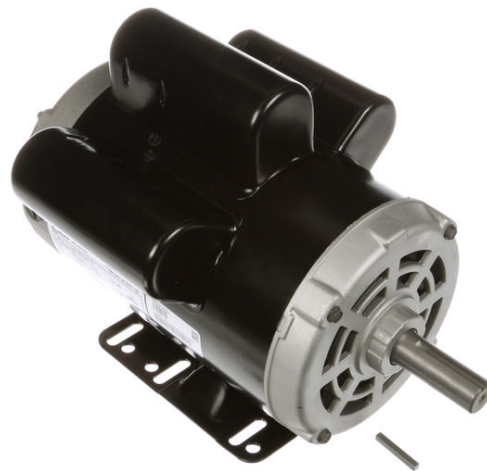


PRODUCT INFORMATION PACKET



Model No: B685
Catalog No: B685
1/2 HP Air Compressor Motor, 1 phase, 3600 RPM, 115/230 V, 56 Frame, ODP
Air Compressor Motors



Regal and Century are trademarks of Regal Rexnord Corporation or one of its affiliated companies.
©2021 Regal Rexnord Corporation, All Rights Reserved. MC017097E





Nameplate Specifications

Output HP	1/2 Hp	Output KW	0.37 kW
Frequency	60 Hz	Voltage	115/230 V
Current	9.6/4.8 A	Speed	3450 rpm
Service Factor	1	Phase	1
Duty	Continuous	Insulation Class	B
Frame	S56	Enclosure	Drip Proof
Thermal Protection	Thermally Protected	Ambient Temperature	40 °C
UL	Recognized	CSA	Y
CE	N	Number of Speeds	1

Technical Specifications

Electrical Type	Capacitor Start , Special Service	Starting Method	Across The Line
Poles	2	Rotation	Clockwise
Mounting	Rigid Base	Drive End Bearing	Ball
Opp Drive End Bearing	Ball	Frame Material	Rolled Steel
Shaft Type	Keyed	Overall Length	10.97 in
Frame Length	6.38 in	Shaft Diameter	0.625 in
Shaft Extension	1.94 in		
Connection Drawing	17050405.PCX	Outline Drawing	172829-S01

This is an uncontrolled document once printed or downloaded and is subject to change without notice. Date Created:10/12/2021

4

3

2

1

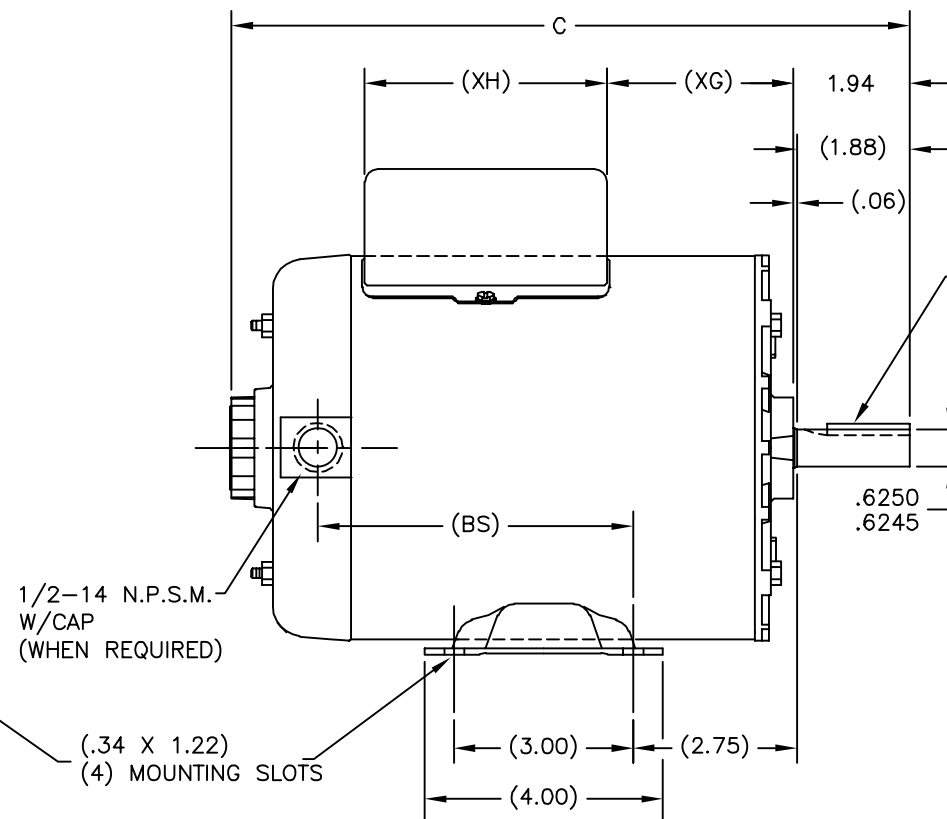
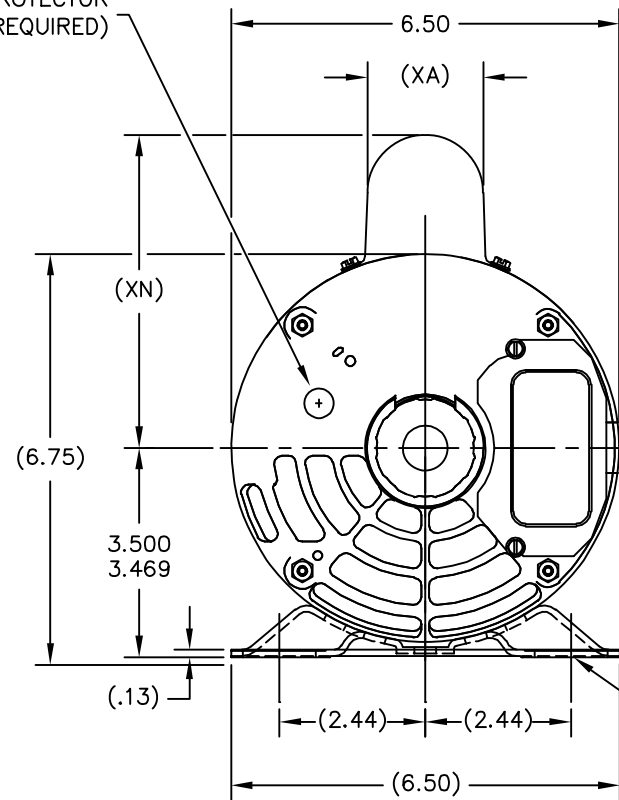
REV	ECO	REV BY	DATE	APPD	DATE
G	0025367	L.LI	04-17-2012	B.SHEN	04-17-2012

GRP	TYPE	FRAME	C	(BS)	(XA)	(XG)	(XH)	(XN)
01	CSS	S56	10.97	4.90	1.64	2.74	4.08	4.87
02	CSS	U56	11.59	5.52	2.01	3.36	4.06	5.20
03	CS	X56	12.09	6.02	2.01	3.86	4.06	5.20
04	CS	M56	11.34	5.27	2.01	3.11	4.06	5.20
05	CSS	S56	10.97	4.90	2.01	2.74	4.06	5.20

ALL DIMENSIONS SHOWN IN PARENTHESIS ARE REFERENCE DIMENSIONS. ALL OTHER DIMENSIONS ARE TOLERANCED PER THE FOLLOWING CHART UNLESS OTHERWISE SPECIFIED.

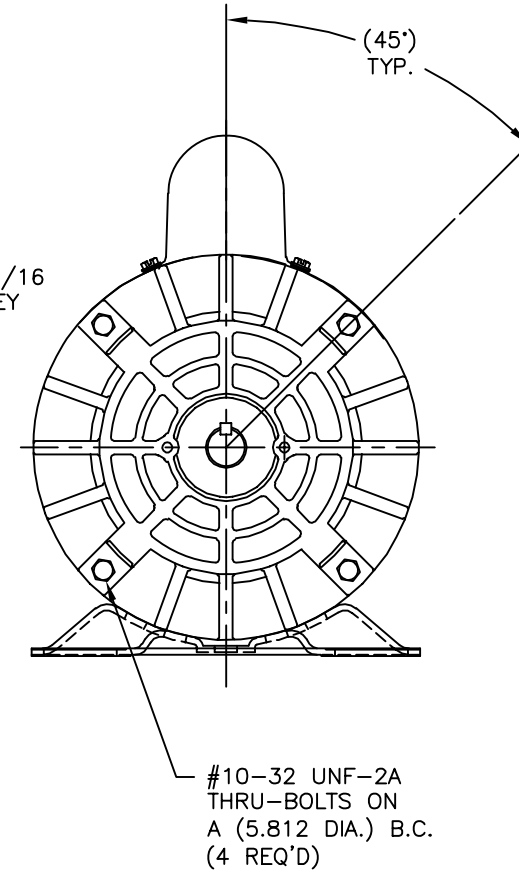
"C" DIM. = +/- .055
 SHAFT EXT. = +/- .034
 LEAD LENGTHS = +/- 1.00
 EXTENDED THRU-BOLTS = +/- .050
 ANG DIM = +/- 2'

MANUAL PROTECTOR (WHEN REQUIRED)



3/16 X 3/16 X 1.38 KEY

.6250
.6245



GEOMETRIC CHARACTERISTICS & SYMBOLS

- FLATNESS
- STRAIGHTNESS
- ∠ ANGULARITY
- ⊥ PERPENDICULARITY (SQUARENESS)
- ∥ PARALLELISM
- ROUNDNESS (CIRCULARITY)
- ⊘ CYLINDRICITY
- △ PROFILE OF ANY SURFACE
- ∩ PROFILE OF ANY LINE
- ↗ RUNOUT
- ⊕ TRUE POSITION
- ◎ CONCENTRICITY
- ≡ SYMMETRY

ASME Y14.5M 1994

UNLESS OTHERWISE SPECIFIED DIM. TOLERANCES ARE AS FOLLOWS:

INCH	±.1	±.02	±.005	±.0005
mm	±0.5	±0.13	±0.013	

ANG. ±.50 DEG
 REMOVE BURRS & BREAK SHARP EDGES:
 INCH .003-.015 mm 0.1-0.4
 CORNER FILLETS TO:
 INCH .020 mm 0.5
 MACHINE SURFACES:
 INCH 125 mm 3.2

METRIC DIMS. SHOWN IN [BRACKETS]

DR BY:	GS	08-07-1986
APPD:	MH	09-09-1985
THIRD ANGLE PROJECTION	⊕	EDS DATE 11-11-2011 FORMAT REV G
CONFIDENTIAL: THIS DRAWING AND ITS INFORMATION ARE THE EXCLUSIVE AND CONFIDENTIAL PROPERTY OF REGAL-BELOIT CORPORATION AND ARE NOT TO BE DISCLOSED, DUPLICATED, DISTRIBUTED OR OTHERWISE USED WITHOUT THE WRITTEN CONSENT OF REGAL-BELOIT CORPORATION. -ALL RIGHTS RESERVED.		

DESCRIPTION OUTLINE	
SIZE C	DWG NO 172829
SCALE NONE	SHEET 1

4

3

2

1

4

3

2

1

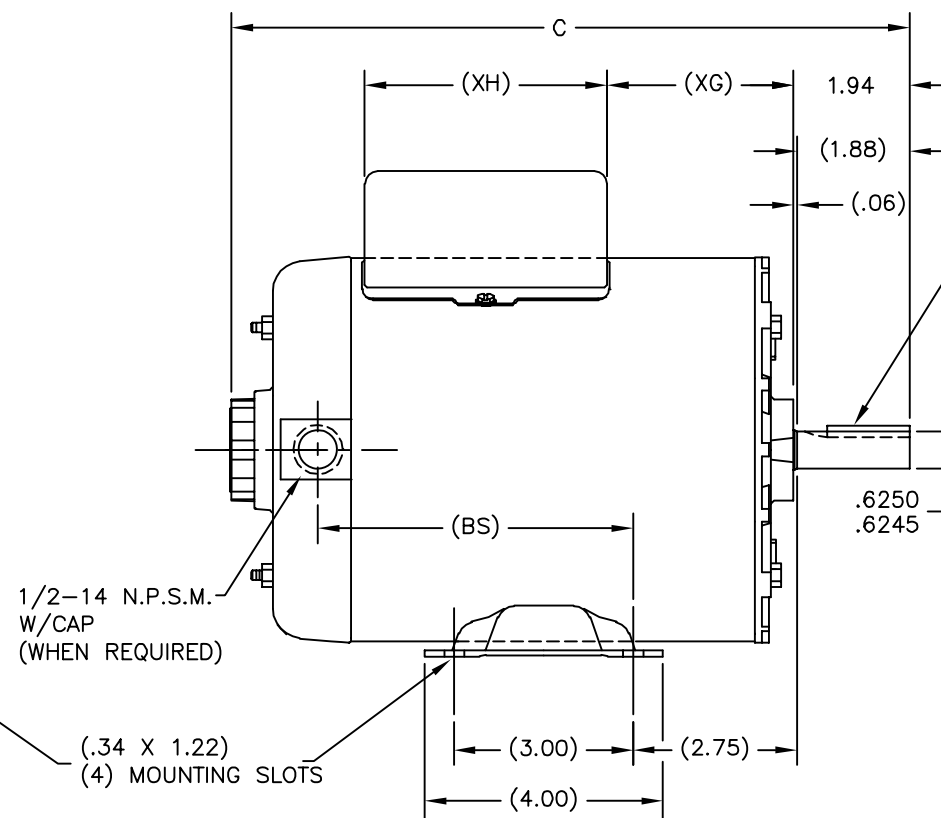
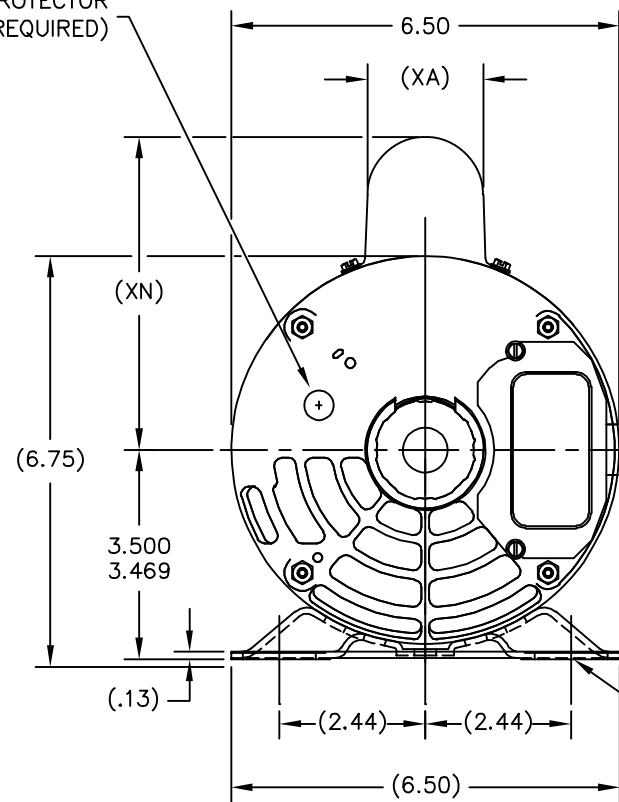
REVISION:	ECO	REVISADO POR:	FECHA:	APROBADO POR:	FECHA:
G	0025367	L.LI	04-17-2012	B.SHEN	04-17-2012

GRP	TYPE	FRAME	C	(BS)	(XA)	(XG)	(XH)	(XN)
01	CSS	S56	10.97	4.90	1.64	2.74	4.08	4.87
02	CSS	U56	11.59	5.52	2.01	3.36	4.06	5.20
03	CS	X56	12.09	6.02	2.01	3.86	4.06	5.20
04	CS	M56	11.34	5.27	2.01	3.11	4.06	5.20
05	CSS	S56	10.97	4.90	2.01	2.74	4.06	5.20

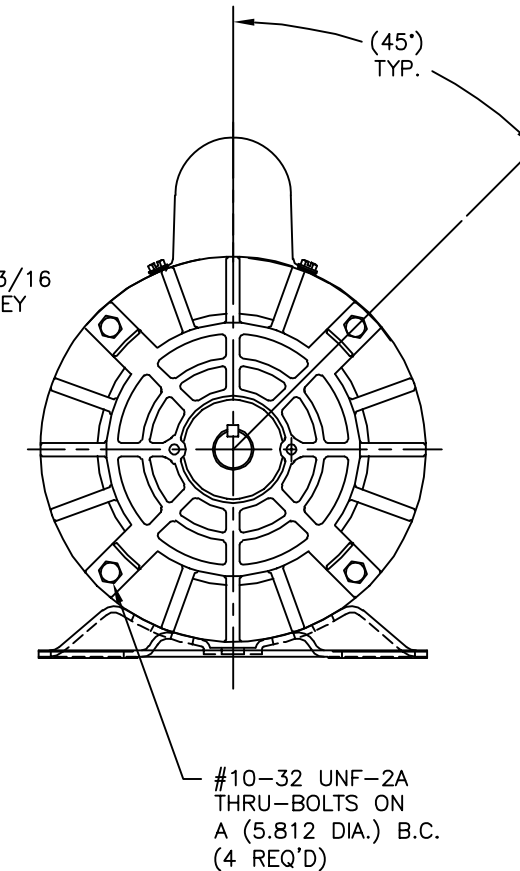
ALL DIMENSIONS SHOWN IN PARENTHESIS ARE REFERENCE DIMENSIONS. ALL OTHER DIMENSIONS ARE TOLERANCED PER THE FOLLOWING CHART UNLESS OTHERWISE SPECIFIED.

"C" DIM. = +/- .055
 SHAFT EXT. = +/- .034
 LEAD LENGTHS = +/- 1.00
 EXTENDED THRU-BOLTS = +/- .050
 ANG DIM = +/- 2'

MANUAL PROTECTOR (WHEN REQUIRED)



3/16 X 3/16 X 1.38 KEY



CARACTERISTICAS DE GEOMETRIA Y SIMBOLOS

- PLANICIDAD
- RECTITUD
- ∠ ANGULARIDAD
- ⊥ PERPENDICULARIDAD (A ESCUADRA)
- // PARALELISMO
- REDONDEZ (CIRCULARIDAD)
- ∅ CILINDRICIDAD
- △ PERFIL DE CUALQUIER SUPERFICIE
- ∧ PERFIL DE CUALQUIER LINEA
- ∧ VARIACION
- ⊕ POSICION REAL
- ◎ CONCENTRICIDAD
- = SIMETRIA

ASME Y14.5M 1994

A MENOS QUE SE ESPECIFIQUE DE OTRA MANERA, LAS TOLERANCIAS DE LAS DIMS; SON LAS SIGUIENTES:

	xx	xxx	xxxx
PULG	±.1	±.02	±.005 ±.0005
mm	±0.5	±0.13	±0.013
ANG.	± 50 GRADOS		
ELIMINAR REBABAS Y ORILLAS FILOSAS DEL BORDE.			
	PULG .003-.015	mm 0.1-0.4	
FILETEAR ESQUINA: PULG .020 mm 0.5			
MAQUINAR SUPERFICIES			
	PULG 125	mm .32	

DIMS METRICAS MOSTRADAS [PARENTESIS]

DIBUJADO POR:	GS	08-07-1986
APROBADO POR:	MH	09-09-1985
TERCER ANGULO DE PROYECCION	⊕	FECHA EDS: 11-11-2011
		REV. FORMATO: G
CONFIDENCIAL: ESTE DIBUJO Y SU INFORMACION SON PROPIEDAD DE USO EXCLUSIVO Y CONFIDENCIAL DE REGAL-BELOIT CORPORATION. Y NO DEBERAN SER REVELADOS, DUPLICADOS, DISTRIBUIDOS O USARSE DE OTRA MANERA SIN EL CONSENTIMIENTO ESCRITO DE REGAL-BELOIT CORPORATION. -TODOS LOS DERECHOS RESERVADOS.		

DESCRIPCION: OUTLINE	
TAMAÑO: C	NUMERO DE DIBUJO: 172829
ESCALA: NONE	HOJA: 1

4

3

2

1

4

3

2

1

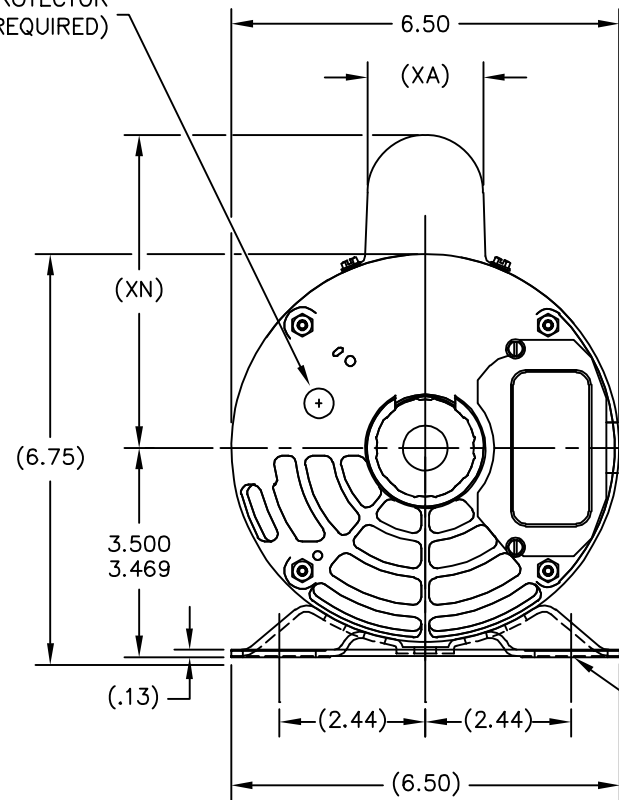
版本	ECO	编制	日期	批准	日期
G	0025367	L.LI	04-17-2012	B.SHEN	04-17-2012

GRP	TYPE	FRAME	C	(BS)	(XA)	(XG)	(XH)	(XN)
01	CSS	S56	10.97	4.90	1.64	2.74	4.08	4.87
02	CSS	U56	11.59	5.52	2.01	3.36	4.06	5.20
03	CS	X56	12.09	6.02	2.01	3.86	4.06	5.20
04	CS	M56	11.34	5.27	2.01	3.11	4.06	5.20
05	CSS	S56	10.97	4.90	2.01	2.74	4.06	5.20

ALL DIMENSIONS SHOWN IN PARENTHESIS ARE REFERENCE DIMENSIONS. ALL OTHER DIMENSIONS ARE TOLERANCED PER THE FOLLOWING CHART UNLESS OTHERWISE SPECIFIED.

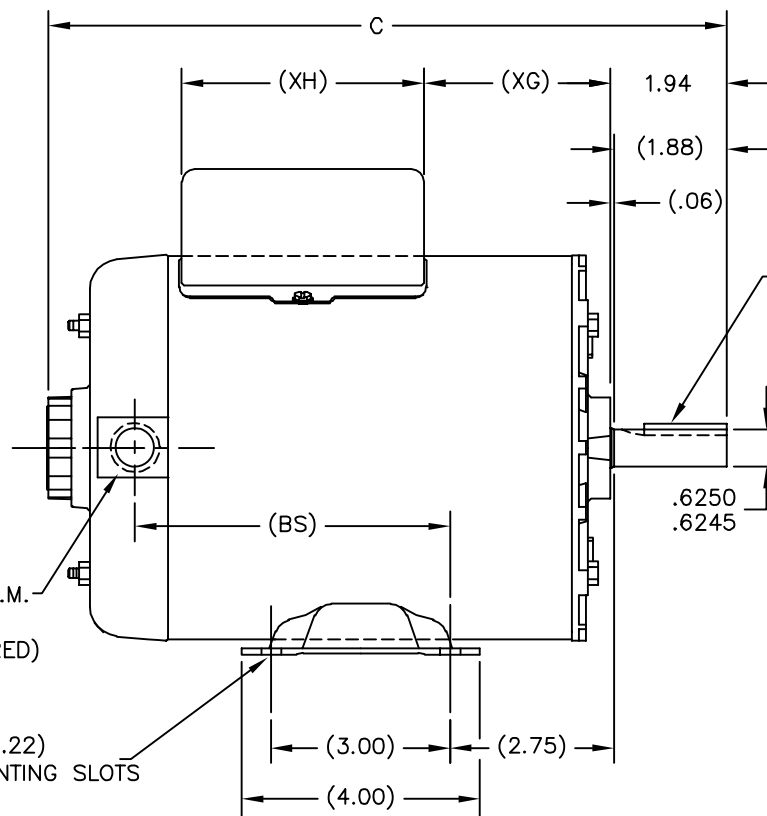
"C" DIM. = +/- .055
 SHAFT EXT. = +/- .034
 LEAD LENGTHS = +/- 1.00
 EXTENDED THRU-BOLTS = +/- .050
 ANG DIM = +/- 2'

MANUAL PROTECTOR (WHEN REQUIRED)



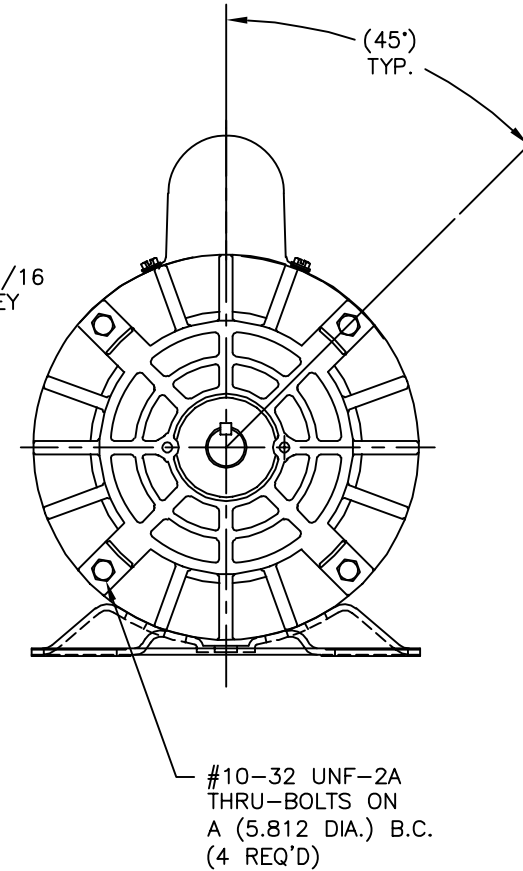
1/2-14 N.P.S.M. W/CAP (WHEN REQUIRED)

(.34 X 1.22) (4) MOUNTING SLOTS



3/16 X 3/16 X 1.38 KEY

.6250
.6245



形位公差	除另有注明
□ 平面度	尺寸公差如下:
— 直线度	英寸 X XX XXX XXXX
∠ 倾斜度	英寸 ±.1 ±.02 ±.005 ±.0005
⊥ 垂直度	毫米 ±0.5 ±0.13 ±0.013
// 平行度	角度 ±.50 度
○ 圆度	清理毛刺和尖棱
⊘ 圆柱度	英寸 .003-.015 毫米 0.1-0.4
△ 面轮廓度	内圆角
∩ 线轮廓度	英寸 .020 毫米 0.5
↗ 圆跳动	表面粗糙度
⊕ 位置度	英制 125 米制 3.2
⊙ 同轴度	米制尺寸显示在 []
≡ 对称度	

ASME Y14.5M 1994

绘图:	GS	08-07-1986
批准:	MH	09-09-1985
第三角投影		图纸格式发布日期 11-11-2011 图纸格式版本 G
机密: 本图纸及相关信息所有权归REGAL-BELOIT CORPORATION. 未经REGAL-BELOIT CORPORATION书面授权, 不得泄露、复制、传播或作其他用途。一版权所有		



名称	OUTLINE	
图幅	C	图号 172829
比例	NONE	页号 1

4

3

2

1