

# PRODUCT INFORMATION PACKET



Model No:  
Catalog No: B381  
2SPL,3450,DP,56,1/60/115/230  
Air Compressor



Regal and Century are trademarks of Regal Beloit Corporation or one of its affiliated companies.  
©2019 Regal Beloit Corporation, All Rights Reserved. MC017097E





### Nameplate Specifications

|                    |                            |                     |                   |
|--------------------|----------------------------|---------------------|-------------------|
| Output HP          | <b>2 SPL HP</b>            | Output KW           | <b>1.5 kW</b>     |
| Frequency          | <b>60 Hz</b>               | Voltage             | <b>115/230 V</b>  |
| Current            | <b>15.0/7.5 A</b>          | Speed               | <b>3450 RPM</b>   |
| Service Factor     | <b>1</b>                   | Phase               | <b>1</b>          |
| Duty               | <b>Continuous</b>          | Insulation Class    | <b>B</b>          |
| Frame              | <b>M56</b>                 | Enclosure           | <b>Drip Proof</b> |
| Overload Protector | <b>Thermally Protected</b> | Ambient Temperature | <b>40 °C</b>      |
| UL                 | <b>Recognized</b>          | CSA                 | <b>Y</b>          |
| CE                 | <b>N</b>                   |                     |                   |

### Technical Specifications

|                       |   |                    |                        |
|-----------------------|---|--------------------|------------------------|
| Electrical Type       | <b>Capacitor Start, Capacitor Run, Single Or Dual</b> | Starting Method    | <b>Across The Line</b> |
| Poles                 | <b>2</b>  | Rotation           | <b>Clockwise</b>       |
| Mounting              | <b>Rigid Base</b>                                     | Drive End Bearing  | <b>Ball</b>            |
| Opp Drive End Bearing | <b>Ball</b>   | Frame Material     | <b>Rolled Steel</b>    |
| Shaft Type            | <b>Keyed</b>  | Overall Length     | <b>11.34 in</b>        |
| Frame Length          | <b>6.75 in</b>  | Shaft Diameter     | <b>0.625 in</b>        |
| Shaft Extension       | <b>1.94 in</b>  |                    |                        |
| Outline Drawing       | <b>172831-S01</b>                                     | Connection Diagram | <b>17050305.PCX</b>    |

This is an uncontrolled document once printed or downloaded and is subject to change without notice. Date Created: 07/29/2019

4

3

2

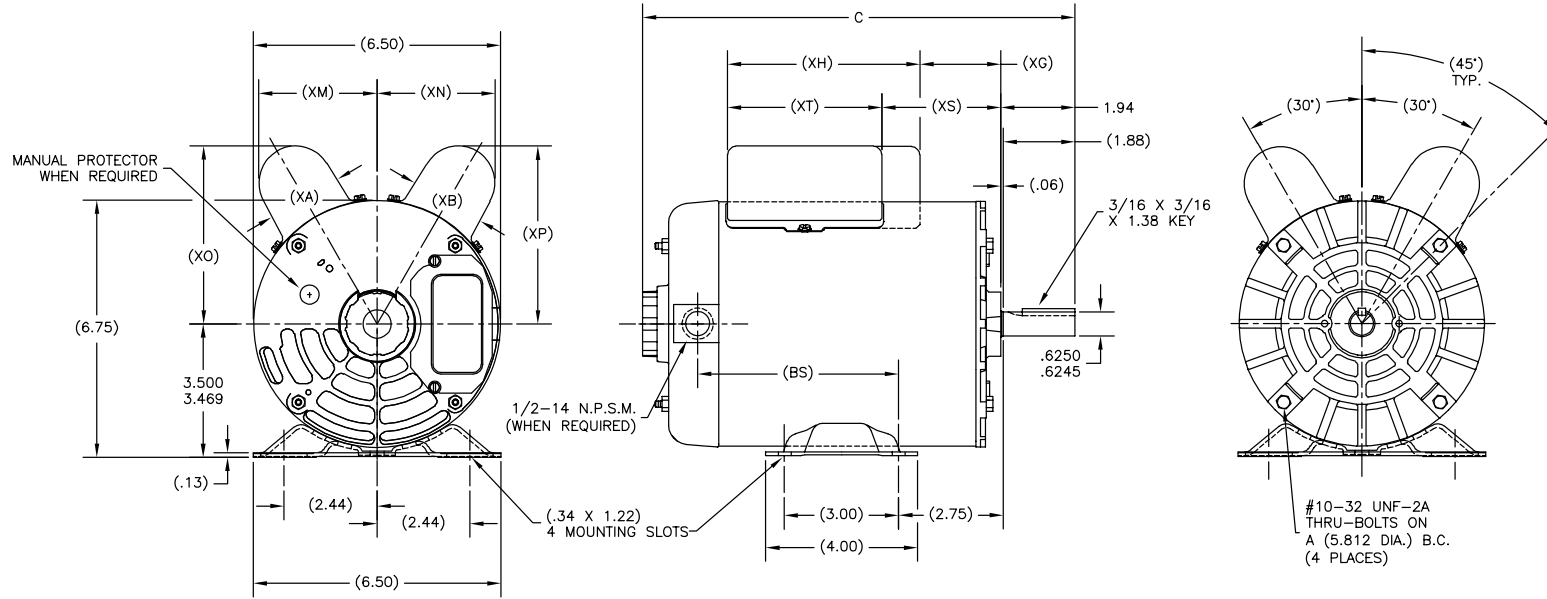
1

|     |         |             |            |         |            |
|-----|---------|-------------|------------|---------|------------|
| REV | ECO     | REV BY      | DATE       | APPD    | DATE       |
| H   | 0025366 | J.M.Ramirez | 04-13-2012 | D.Muñoz | 04-13-2012 |

| GRP | TYPE | FRAME | C     | (BS) | (XA) | (XB) | (XG) | (XH) | (XM) | (XN) | (XO) | (XP) | (XS) | (XT) |
|-----|------|-------|-------|------|------|------|------|------|------|------|------|------|------|------|
| 01  | CP   | M56   | 11.34 | 5.27 | 2.01 | 2.01 | 2.12 | 5.06 | 3.09 | 3.09 | 4.64 | 4.64 | 3.12 | 4.06 |
| 02  | CP   | N56   | 11.84 | 5.77 | 2.27 | 2.01 | 2.37 | 5.30 | 3.33 | 3.09 | 4.92 | 4.64 | 3.62 | 4.06 |

ALL DIMENSIONS SHOWN IN PARENTHESIS ARE REFERENCE DIMENSIONS. ALL OTHER DIMENSIONS ARE TOLERANCED PER THE FOLLOWING CHART UNLESS OTHERWISE SPECIFIED.

"C" DIM. = +/- .055  
 SHAFT EXT. = +/- .034  
 LEAD LENGTHS = +/- 1.00  
 EXTENDED THRU-BOLTS = +/- .050



| GEOMETRIC CHARACTERISTICS & SYMBOLS |                               |
|-------------------------------------|-------------------------------|
| □                                   | FLATNESS                      |
| —                                   | STRAIGHTNESS                  |
| ∠                                   | ANGULARITY                    |
| ⊥                                   | PERPENDICULARITY (SQUARENESS) |
| ∥                                   | PARALLELISM                   |
| ○                                   | ROUNDNESS (CIRCULARITY)       |
| ⊘                                   | CYLINDRICITY                  |
| —                                   | PROFILE OF ANY SURFACE        |
| —                                   | PROFILE OF ANY LINE           |
| ⊕                                   | RUNOUT                        |
| ⊕                                   | TRUE POSITION                 |
| ⊙                                   | CONCENTRICITY                 |
| —                                   | SYMMETRY                      |
| ASME Y14.5M 1994                    |                               |

UNLESS OTHERWISE SPECIFIED DIM. TOLERANCES ARE AS FOLLOWS:

|      |      |       |        |        |
|------|------|-------|--------|--------|
| INCH | ±.1  | ±.02  | ±.005  | ±.0005 |
| mm   | ±0.5 | ±0.13 | ±0.013 |        |

ANG. ±.50 DEG  
 REMOVE BURRS & BREAK SHARP EDGES:  
 INCH .003-.015 mm 0.1-.04  
 CORNER FILLETS TO:  
 INCH .020 mm 0.5  
 MACHINE SURFACES:  
 INCH 125 mm 3.2

METRIC DIMS. SHOWN IN [BRACKETS]

|  |                                     |            |
|--|-------------------------------------|------------|
| DR BY:   | GS                                  | 08-13-1985 |
| APPD:  | MS                                  | 09-18-1986 |
| THIRD ANGLE PROJECTION   | EDS DATE 11-11-2011<br>FORMAT REV G |            |
| CONFIDENTIAL: THIS DRAWING AND ITS INFORMATION ARE THE EXCLUSIVE AND CONFIDENTIAL PROPERTY OF REGAL-BELOIT CORPORATION AND ARE NOT TO BE DISCLOSED, DUPLICATED, DISTRIBUTED OR OTHERWISE USED WITHOUT THE WRITTEN CONSENT OF REGAL-BELOIT CORPORATION. -ALL RIGHTS RESERVED. |                                     |            |

|                            |        |
|----------------------------|--------|
|                            |        |
| DESCRIPTION                |        |
| MODEL-CFHP-56FR<br>OUTLINE |        |
| SIZE                       | DWG NO |
| C                          | 172831 |
| SCALE                      | SHEET  |
| NONE                       | 1      |

4

3

2

1

4

3

2

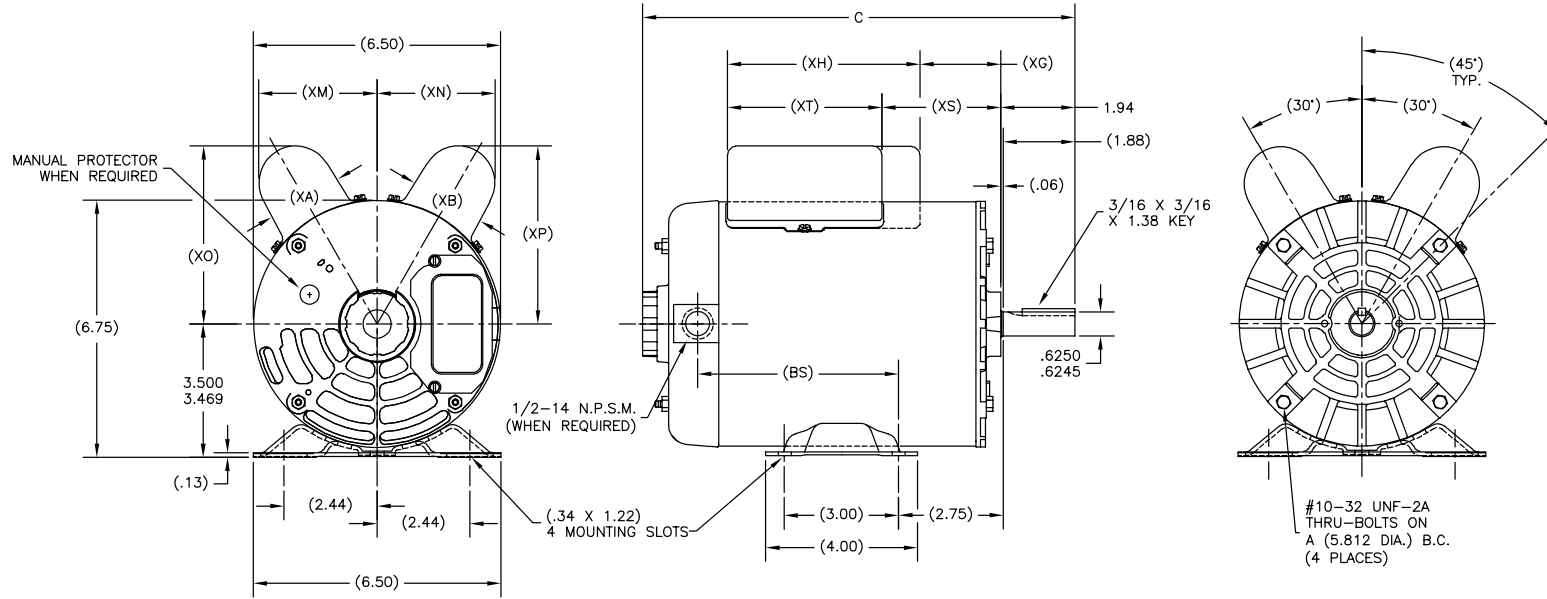
1

|           |         |               |            |               |            |
|-----------|---------|---------------|------------|---------------|------------|
| REVISION: | ECO     | REVISADO POR: | FECHA:     | APROBADO POR: | FECHA:     |
| H         | 0025366 | J.M.Ramirez   | 04-13-2012 | D.Muñoz       | 04-13-2012 |

| GRP | TYPE | FRAME | C     | (BS) | (XA) | (XB) | (XG) | (XH) | (XM) | (XN) | (XO) | (XP) | (XS) | (XT) |
|-----|------|-------|-------|------|------|------|------|------|------|------|------|------|------|------|
| 01  | CP   | M56   | 11.34 | 5.27 | 2.01 | 2.01 | 2.12 | 5.06 | 3.09 | 3.09 | 4.64 | 4.64 | 3.12 | 4.06 |
| 02  | CP   | N56   | 11.84 | 5.77 | 2.27 | 2.01 | 2.37 | 5.30 | 3.33 | 3.09 | 4.92 | 4.64 | 3.62 | 4.06 |

ALL DIMENSIONS SHOWN IN PARENTHESIS ARE REFERENCE DIMENSIONS. ALL OTHER DIMENSIONS ARE TOLERANCED PER THE FOLLOWING CHART UNLESS OTHERWISE SPECIFIED.

"C" DIM. = +/- .055  
 SHAFT EXT. = +/- .034  
 LEAD LENGTHS = +/- 1.00  
 EXTENDED THRU-BOLTS = +/- .050



CARACTERISTICAS DE GEOMETRIA Y SIMBOLOS

- PLANICIDAD
- RECTITUD
- ∠ ANGULARIDAD
- ⊥ PERPENDICULARIDAD (A ESQUADRA)
- // PARALELISMO
- REDONDEZ (CIRCULARIDAD)
- ⊘ CILINDRICIDAD
- ⊖ PERFIL DE CUALQUIER SUPERFICIE
- ⊖ PERFIL DE CUALQUIER LINEA
- ↑ VARIACION
- ⊕ POSICION REAL
- ⊙ CONCENTRICIDAD
- ≡ SIMETRIA

ASME Y14.5M 1994

A MENOS QUE SE ESPECIFIQUE DE OTRA MANERA, LAS TOLERANCIAS DE LAS DIMS. SON LAS SIGUIENTES:

PULG ±.1 ±.02 ±.005 ±.0005  
 mm ±0.5 ±0.13 ±0.013

ANG. ±.50 GRADOS

ELIMINAR REBABAS Y ORILLAS FILOSAS DEL BORDE.

FILETEAR ESQUINA: PULG .020 mm 0.5

MAQUINAR SUPERFICIES

PULG 125 mm 3.2

DIMS METRICAS MOSTRADAS [PARENTESIS]

|                             |    |  |
|-----------------------------|----|--|
| DIBUJADO POR:               | GS | 08-13-1985                               |
| APROBADO POR:               | MS | 09-18-1986                               |
| TERCER ANGULO DE PROYECCION | ⊕  | FECHA EDS: 11-11-2011<br>REV. FORMATO: G |

CONFIDENCIAL: ESTE DIBUJO Y SU INFORMACION SON PROPIEDAD DE USO EXCLUSIVO Y CONFIDENCIAL DE REGAL-BELOIT CORPORATION. Y NO DEBERAN SER REVELADOS, DUPLICADOS, DISTRIBUIDOS O USARSE DE OTRA MANERA SIN EL CONSENTIMIENTO ESCRITO DE REGAL-BELOIT CORPORATION. -TODOS LOS DERECHOS RESERVADOS.

|                            |      |                          |        |
|----------------------------|------|--------------------------|--------|
| DESCRIPCION:               |      | REGAL-BELOIT CORPORATION |        |
| MODEL-CFHP-56FR<br>OUTLINE |      |                          |        |
| TAMAÑO:                    | C    | NUMERO DE DIBUJO:        | 172831 |
| ESCALA:                    | NONE | HOJA:                    | 1      |

4

3

2

1

4

3

2

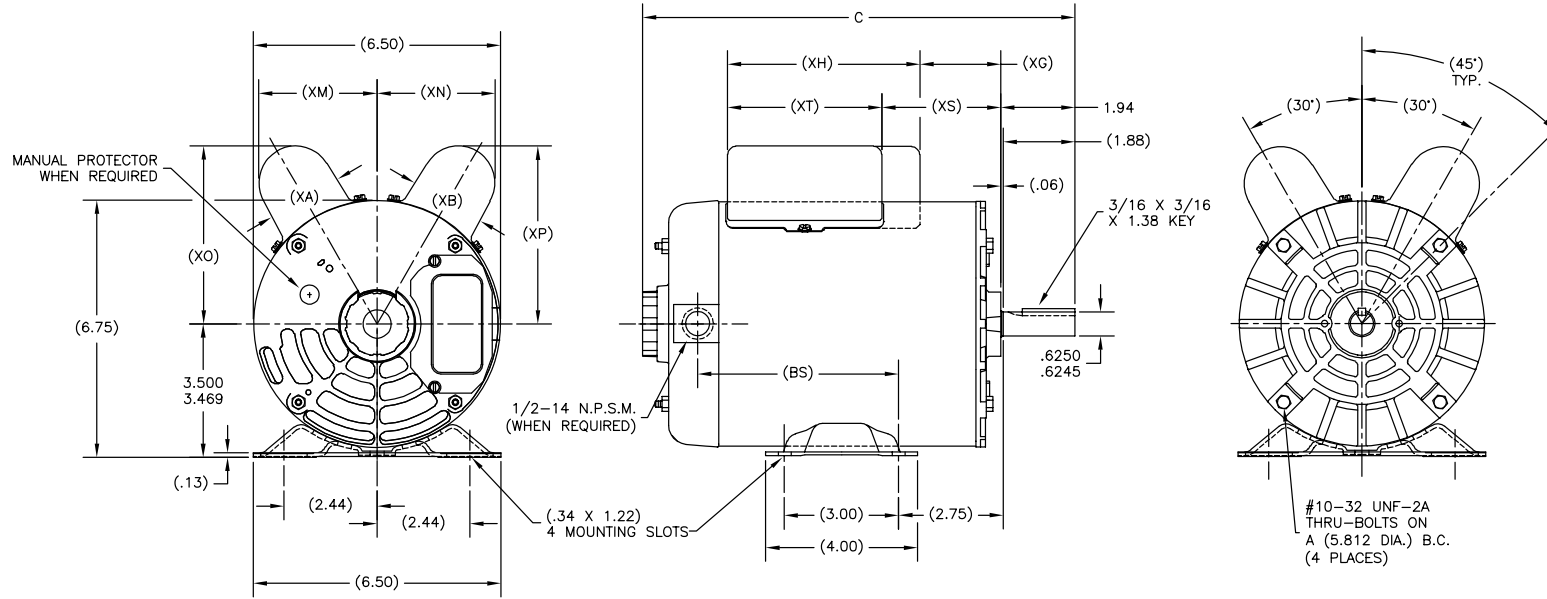
1

|    |         |             |            |         |            |
|----|---------|-------------|------------|---------|------------|
| 版本 | ECO     | 编制          | 日期         | 批准      | 日期         |
| H  | 0025366 | J.M.Ramirez | 04-13-2012 | D.Muñoz | 04-13-2012 |

| GRP | TYPE | FRAME | C     | (BS) | (XA) | (XB) | (XG) | (XH) | (XM) | (XN) | (XO) | (XP) | (XS) | (XT) |
|-----|------|-------|-------|------|------|------|------|------|------|------|------|------|------|------|
| 01  | CP   | M56   | 11.34 | 5.27 | 2.01 | 2.01 | 2.12 | 5.06 | 3.09 | 3.09 | 4.64 | 4.64 | 3.12 | 4.06 |
| 02  | CP   | N56   | 11.84 | 5.77 | 2.27 | 2.01 | 2.37 | 5.30 | 3.33 | 3.09 | 4.92 | 4.64 | 3.62 | 4.06 |

ALL DIMENSIONS SHOWN IN PARENTHESIS ARE REFERENCE DIMENSIONS. ALL OTHER DIMENSIONS ARE TOLERANCED PER THE FOLLOWING CHART UNLESS OTHERWISE SPECIFIED.

"C" DIM. = +/- .055  
 SHAFT EXT. = +/- .034  
 LEAD LENGTHS = +/- 1.00  
 EXTENDED THRU-BOLTS = +/- .050



|        |                          |
|--------|--------------------------|
| 形位公差   | 除另有注明                    |
| □ 平面度  | 尺寸公差如下:                  |
| — 直线度  | 英寸 X XX XXX XXXX         |
| ∠ 倾斜度  | 英寸 ±.1 ±.02 ±.005 ±.0005 |
| ⊥ 垂直度  | 毫米 ±0.5 ±0.13 ±0.013     |
| ∥ 平行度  | 角度 ±.50 度                |
| ○ 圆度   | 清理毛刺和尖棱                  |
| ⊙ 圆跳动  | 英寸 .003-.015 毫米 0.1-0.4  |
| ⊙ 面轮廓度 | 内圆角                      |
| ⊙ 线轮廓度 | 英寸 .020 毫米 0.5           |
| ⊙ 圆跳动  | 表面粗糙度                    |
| ⊙ 位置度  | 英制 125 米制 3.2            |
| ⊙ 对称度  | 米制尺寸显示在 [ ]              |

ASME Y14.5M 1994

|                         |                         |
|-------------------------|-------------------------|
| 除另有注明                   | 除另有注明                   |
| 尺寸公差如下:                 | 尺寸公差如下:                 |
| 英寸 X XX XXX XXXX        | 英寸 X XX XXX XXXX        |
| 毫米 ±0.5 ±0.13 ±0.013    | 毫米 ±0.5 ±0.13 ±0.013    |
| 角度 ±.50 度               | 角度 ±.50 度               |
| 清理毛刺和尖棱                 | 清理毛刺和尖棱                 |
| 英寸 .003-.015 毫米 0.1-0.4 | 英寸 .003-.015 毫米 0.1-0.4 |
| 内圆角                     | 内圆角                     |
| 英寸 .020 毫米 0.5          | 英寸 .020 毫米 0.5          |
| 表面粗糙度                   | 表面粗糙度                   |
| 英制 125 米制 3.2           | 英制 125 米制 3.2           |
| 米制尺寸显示在 [ ]             | 米制尺寸显示在 [ ]             |

|   |                     |            |
|---|---------------------|------------|
| 绘图:   | GS                  | 08-13-1985 |
| 批准:   | MS                  | 09-18-1986 |
| 第三角投影   | 图框格式发布日期 11-11-2011 | 图框格式版本 C   |
| 机密: 本图纸及相关信息所有权归REGAL-BELOIT CORPORATION. 未经REGAL-BELOIT CORPORATION书面授权, 不得泄露、复制、传播或作其他用途。--版权所有 |                     |            |

|    |    |                            |
|----|----|----------------------------|
| 名称 |    | MODEL-CFHP-56FR<br>OUTLINE |
| 图幅 | 图号 | C 172831                   |
| 比例 | 图号 | NONE 1                     |

4

3

2

1