

## Product Overview



Print



[Click to Enlarge](#)

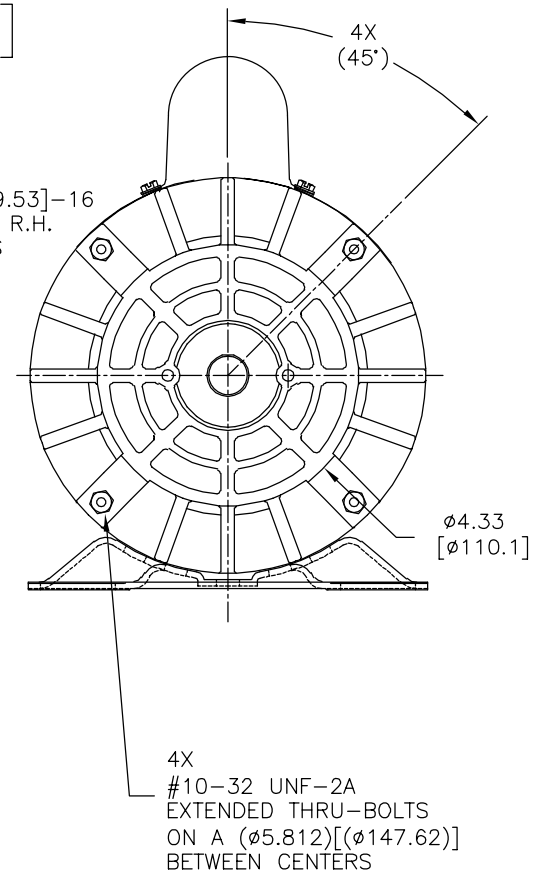
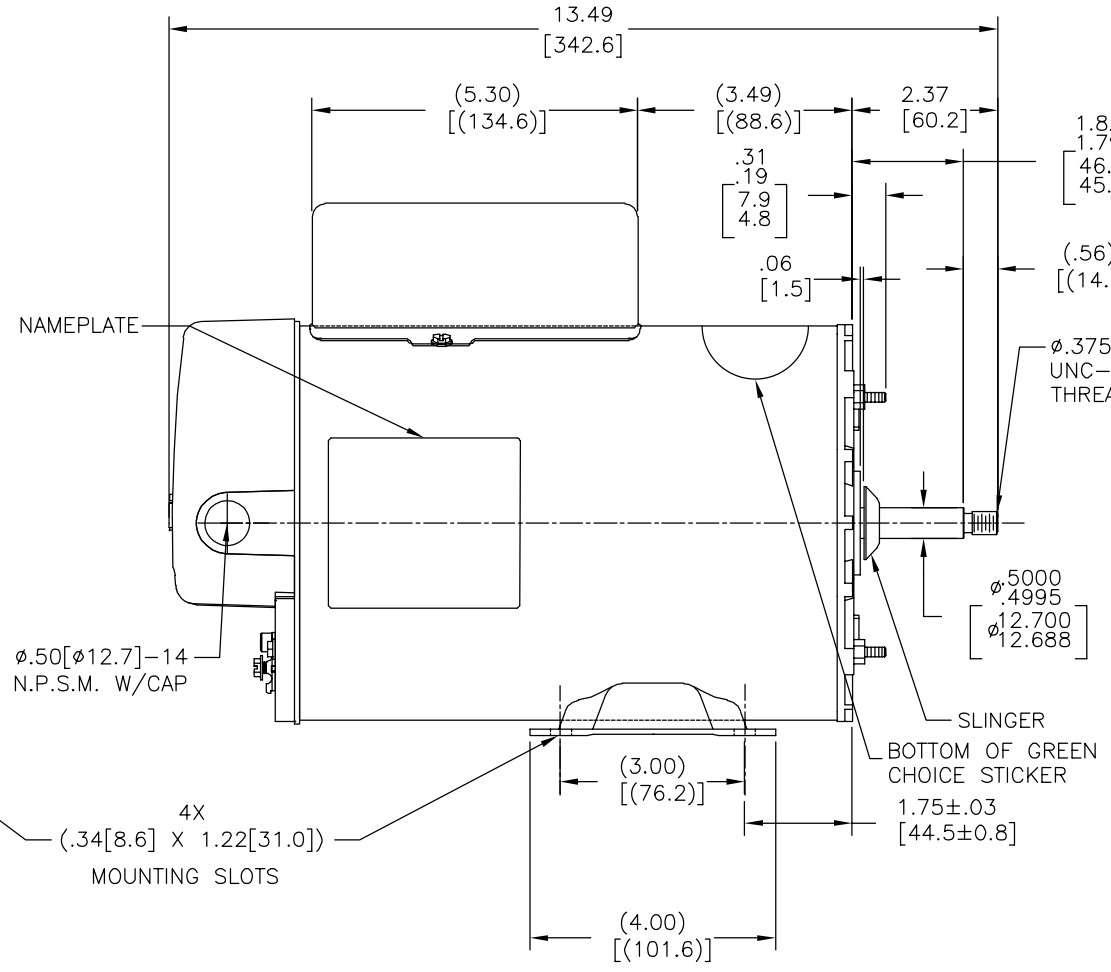
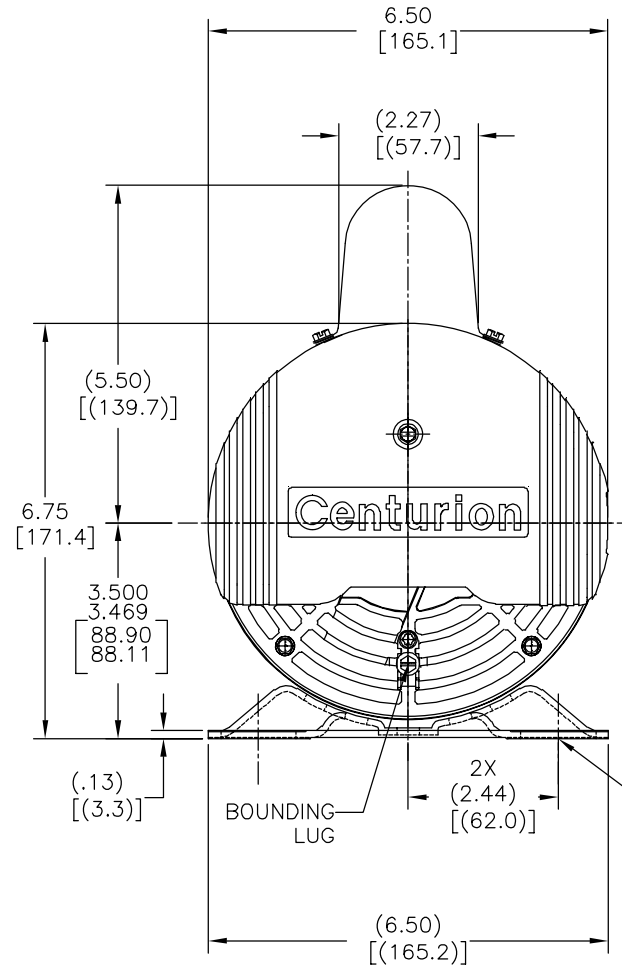
<b>Product Type :</b>	AC Motors
<b>Product Family:</b>	6-1/2" Diameter (56 Frame)
<b>Stock Number:</b>	b2235
<b>Reference:</b>	<a href="#">Catalog Page: 206</a>
<b>Description:</b>	MODEL-PFHP-56FR
<b>Features:</b>	Product feature information temporarily unavailable
<b>Applications:</b>	Product application information temporarily unavailable
<b>List Price:</b>	\$453

The image shown is representative only and the actual product may differ from the image shown

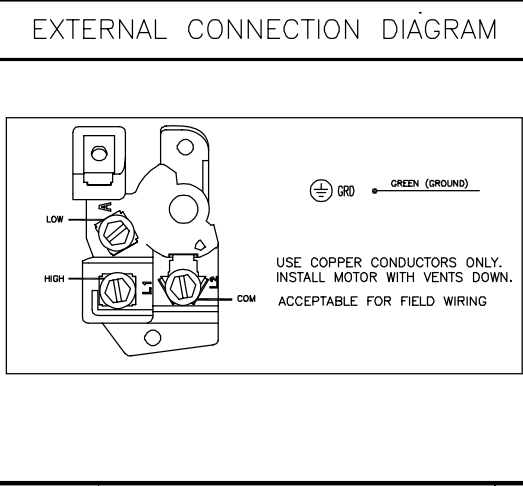
### TECHNICAL SPECIFICATIONS    NOTES    DRAWINGS

<b>Horse Power:</b>	---
<b>Amperes:</b>	12.0/3.0
<b>Frequency:</b>	60
<b>RPM:</b>	3450/1725
<b>Voltage:</b>	230
<b>Number of Speeds:</b>	3450
<b>Motor Type:</b>	CXCP
<b>Frame Size:</b>	R56Y
<b>Nema Suffix:</b>	Y
<b>Service Factor:</b>	---
<b>Phase:</b>	1
<b>Enclosure:</b>	ODP
<b>Bearings:</b>	BALL/BALL
<b>Ambient Temperature:</b>	50
<b>Insulation Class:</b>	F
<b>Rotation:</b>	CCWPE
<b>Protector:</b>	THERMALLY PROTECTED
<b>Agency Approvals:</b>	ULCSA
<b>Duty Cycle:</b>	CONT

REV	ECO	REV BY	DATE	APPD	DATE
E	0025941	W.CORTEZ	05-10-2012	J. DE LUNA	05-10-2012



NAMEPLATE DATA	
MODEL: F56AA57A01	CUST PN: B2235
HP: --- SF: ---	ROT: CCWPE
RPM: 3450/1725	TYPE: CXCP
FORM: KJM	CODE: G
VOLTS: 230	FRAME: R56Y
AMPS:	
MAX AMPS: 12.0/3.0	
SF AMPS:	
PH: 1	HZ: 60
INS: F	AMB: 50
DUTY: CONT	
ENCLOSURE: ODP	
THERMALLY PROTECTED	



- NOTES
- SHAFT RUNOUT NOT TO EXCEED .002[.05] T.I.R
  - ALL DIMENSIONS SHOWN IN PARENTHESIS ARE REFERENCE DIMENSIONS.
  - REF
 

3.00/.380HP	12.0/3.0A
3.45/.437HP	13.7/3.2A
MAXLOAD AMPS	14.0/3.2A

PERFORMANCE CURVE	APPROVED SAMPLE		
0116783	CSR-0000479		
UL COMPONENT	CSA		
FILE#	CCN#	FILE#	GUIDE#
E25022	XEWR2	LR43341	4211-01
CUSTOMER	DISTRIBUTION		

- GEOMETRIC CHARACTERISTICS & SYMBOLS
- FLATNESS
  - STRAIGHTNESS
  - ANGULARITY
  - PERPENDICULARITY (SQUARENESS)
  - PARALLELISM
  - ROUNDNESS (CIRCULARITY)
  - CYLINDRICITY
  - PROFILE OF ANY SURFACE
  - PROFILE OF ANY LINE
  - RUNDUT
  - TRUE POSITION
  - CONCENTRICITY
  - SYMMETRY
- ASME Y14.5M 1994

- UNLESS OTHERWISE SPECIFIED DIM. TOLERANCES ARE AS FOLLOWS:
- |      |      |       |        |     |       |      |        |
|------|------|-------|--------|-----|-------|------|--------|
| INCH | ±.1  | XX    | ±.02   | XXX | ±.005 | XXXX | ±.0005 |
| mm   | ±0.5 | ±0.13 | ±0.013 |     |       |      |        |
- ANG. ±.50 DEG  
REMOVE BURRS & BREAK SHARP EDGES:  
INCH .003-.015 mm 0.1-0.4  
CORNER FILLETS TO:  
INCH .020 mm 0.5  
MACHINE SURFACES:  
INCH 125 mm 3.2
- METRIC DIMS. SHOWN IN [BRACKETS]

DR BY:	BL	02-08-2010
APPD:	TZ	02-08-2010
THIRD ANGLE PROJECTION	EDS DATE	11-11-2011
	FORMAT REV	G

CONFIDENTIAL: THIS DRAWING AND ITS INFORMATION ARE THE EXCLUSIVE AND CONFIDENTIAL PROPERTY OF REGAL-BELOIT CORPORATION AND ARE NOT TO BE DISCLOSED, DUPLICATED, DISTRIBUTED OR OTHERWISE USED WITHOUT THE WRITTEN CONSENT OF REGAL-BELOIT CORPORATION. -ALL RIGHTS RESERVED.

DESCRIPTION	OUTLINE
SIZE	C
DWG NO	B2235
SCALE	NONE
SHEET	1

4

3

2

1

4

3

2

1