

PRODUCT INFORMATION PACKET



Model No: 9207F2

Catalog No: 9207F2

iMotor® 6-9-12 WATT Refrigeration Motor, 1550 RPM, 115 Volts, Unit Bearing, TEAO



Regal and Century are trademarks of Regal Rexnord Corporation or one of its affiliated companies.

©2022 Regal Rexnord Corporation, All Rights Reserved. MC017097E





Nameplate Specifications

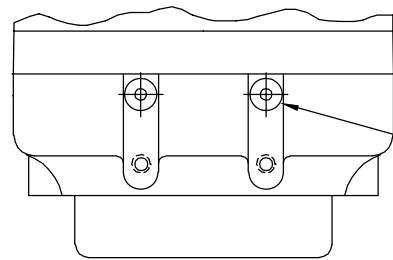
Output Watts	6, 9, 12 W	Frequency	60 Hz
Voltage	115 V	Current	.2-.3 A
Speed	1550 rpm	Service Factor	1
Phase	1	Duty	Continuous
Insulation Class	A	Frame	UNIT BEARING
Enclosure	Totally Enclosed Air Over	Thermal Protection	Automatic
Ambient Temperature	40 °C	UL	Recognized
CSA	Y	CE	N
Number of Speeds	1		

Technical Specifications

Electrical Type	Electronically Commutated Motor	Starting Method	Across The Line
Poles	4	Rotation	Clockwise Lead End
Mounting	2 BOSS/OSE 5 HOLES	Drive End Bearing	Unit
Opp Drive End Bearing	Unit	Frame Material	Cast Iron
Shaft Type	Threaded	Frame Length	3.72 in
Shaft Diameter	1/4x20 in	Shaft Extension	0.42 in
Outline Drawing	9207F2-S01		

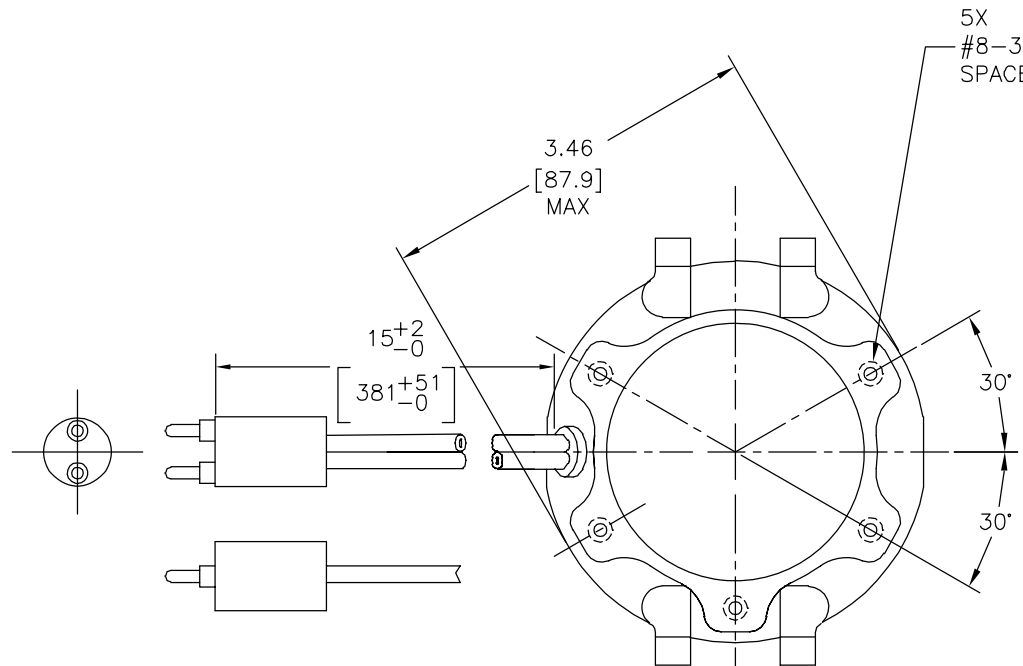
This is an uncontrolled document once printed or downloaded and is subject to change without notice. Date Created:11/28/2022

REV	ECO	REV BY	DATE	APPD	DATE
C	0025432	O. CARVAJAL	04-16-2012	D. BALDERRAMA	04-16-2012

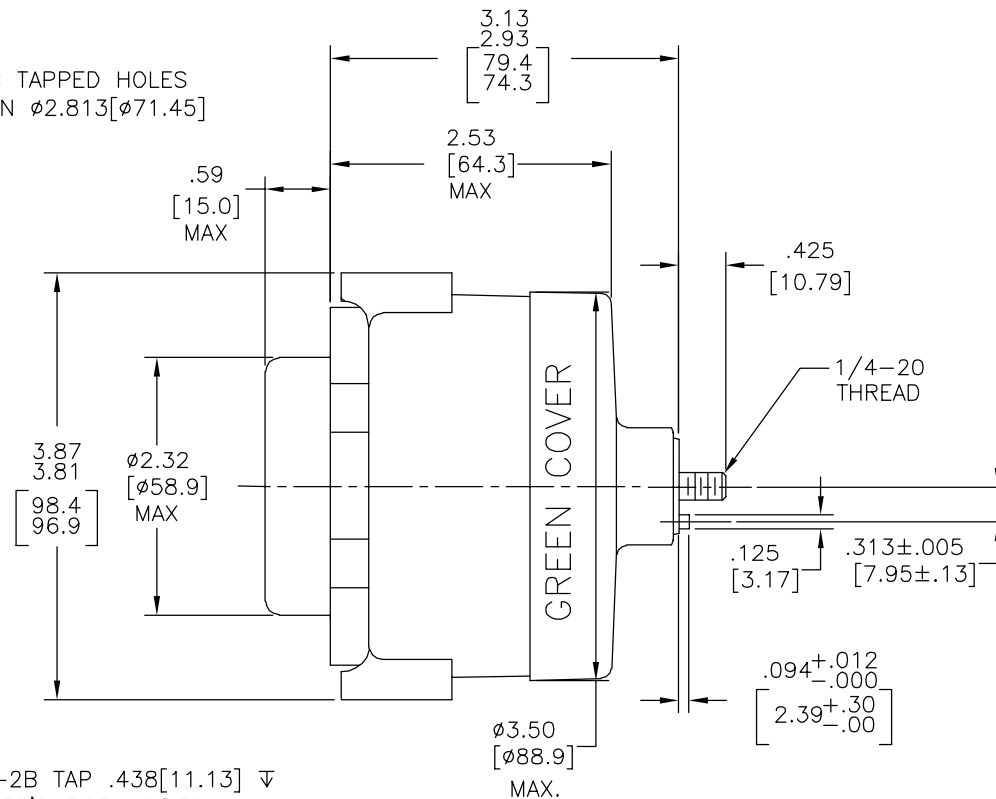


REMOVABLE PLUGS AS SHOWN

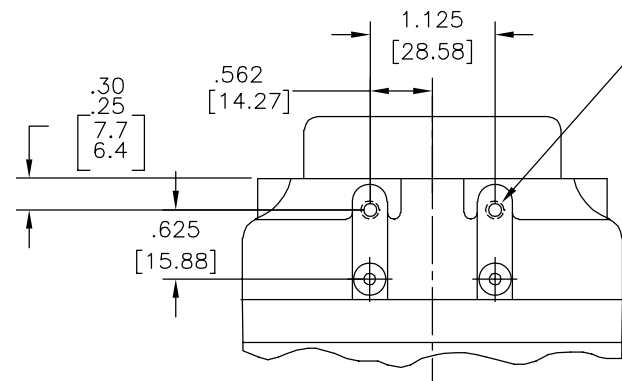
NOTE: MOUNTING SCREW TORQUE 3 FT. LB. MAX



5X #8-36 UNF-2B TAPPED HOLES SPACED 120° ON $\phi 2.813$ [$\phi 71.45$]



#8-36 UNF-2B TAP .438 [11.13] ∇ 4X HOLES REQ'D BOTH SIDES



NOTE: OUTLINE DIMENSIONS FOR WHICH NO LIMIT IS SPECIFIED ARE NOMINAL AND NOT GUARANTEED AS TO TOLERANCE. ADDITIONAL INFORMATION ON TOLERANCES WILL BE FURNISHED ON SPECIFIC REQUEST.

UTB1CB1551EM56
115V 60HZ CW
CUST. NO. 9207F2

GEOMETRIC CHARACTERISTICS & SYMBOLS

- ▭ FLATNESS
- STRAIGHTNESS
- ∠ ANGULARITY
- ⊥ PERPENDICULARITY (SQUARENESS)
- // PARALLELISM
- ROUNDNESS (CIRCULARITY)
- ⊘ CYLINDRICITY
- △ PROFILE OF ANY SURFACE
- ∩ PROFILE OF ANY LINE
- ↗ RUNOUT
- ⊕ TRUE POSITION
- ◎ CONCENTRICITY
- ≡ SYMMETRY

ASME Y14.5M 1994

UNLESS OTHERWISE SPECIFIED DIM. TOLERANCES ARE AS FOLLOWS:

INCH	±.1	±.02	±.005	±.0005
mm	±0.5	±0.13	±0.013	

ANG. ±.50 DEG
REMOVE BURRS & BREAK SHARP EDGES:
INCH .003-.015 mm 0.1-0.4
CORNER FILLETS TO:
INCH .020 mm 0.5
MACHINE SURFACES:
INCH 125 mm 3.2

METRIC DIMS. SHOWN IN [BRACKETS]

DR BY:	J. NICTER	01-30-2009
APPD:		
THIRD ANGLE PROJECTION		EDS DATE 11-11-2011 FORMAT REV G
CONFIDENTIAL: THIS DRAWING AND ITS INFORMATION ARE THE EXCLUSIVE AND CONFIDENTIAL PROPERTY OF REGAL-BELOIT CORPORATION AND ARE NOT TO BE DISCLOSED, DUPLICATED, DISTRIBUTED OR OTHERWISE USED WITHOUT THE WRITTEN CONSENT OF REGAL-BELOIT CORPORATION. -ALL RIGHTS RESERVED.		

DESCRIPTION MODEL-SFHP-UB OUTLINE	
SIZE C	DWG NO 9207F2
SCALE NONE	SHEET 1

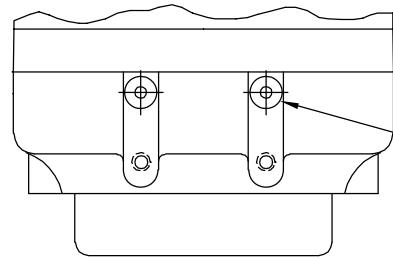
4

3

2

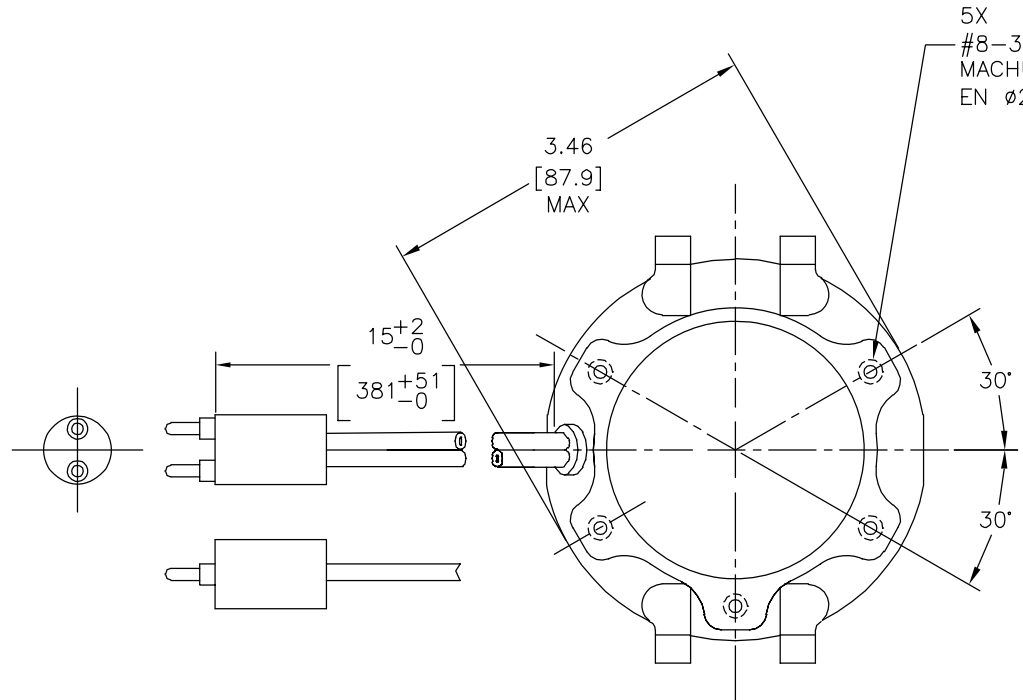
1

REVISION:	ECO	REVISADO POR:	FECHA:	APROBADO POR:	FECHA:
C	0025432	O. CARVAJAL	04-16-2012	D. BALDERRAMA	04-16-2012

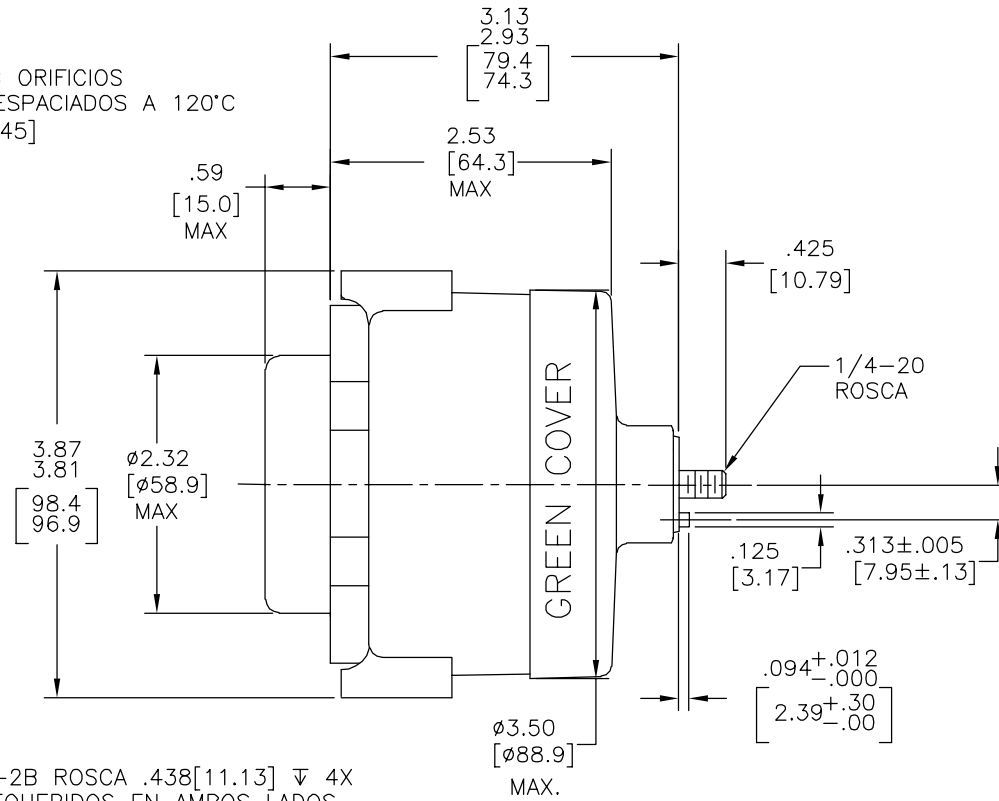


TAPONES REMOVIBLES
COMO SE MUESTRA

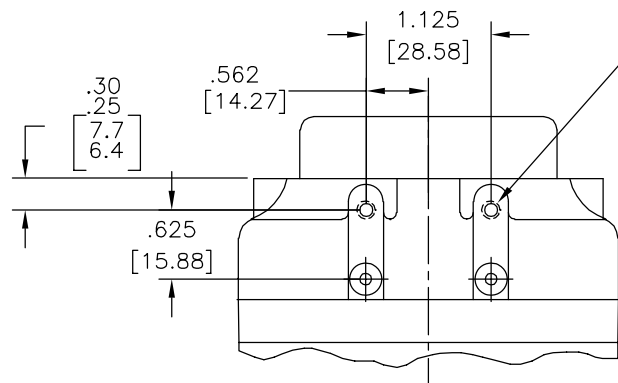
NOTA: TORNILLO DE MONTAJE TORQUE A 3 LIBRAS POR PIE MAXIMO



5X
#8-36 UNF-2B ORIFICIOS
MACHUELADOS ESPACIADOS A 120°C
EN Ø2.813 [Ø71.45]



#8-36 UNF-2B ROSCA .438 [11.13] ∇ 4X
ORIFICIOS REQUERIDOS EN AMBOS LADOS



NOTA: LAS DIMENSIONES DEL DIBUJO PARA EL CUAL NO HAY LIMITES ESPECIFICADOS SON NOMINALES Y NO GARANTIZAN UNA TOLERANCIA. LA INFORMACION ADICIONAL EN TOLERANCIAS SERA PROPORCIONADA EN REQUISICIONES ESPECIFICAS.

UTB1CB1551EM56
115V 60HZ CW
CUST. NO. 9207F2

CARACTERISTICAS DE GEOMETRIA Y SIMBOLOS	
∇	PLANICIDAD
-	RECTITUD
∠	ANGULARIDAD
⊥	PERPENDICULARIDAD (A ESCUADRA)
//	PARALELISMO
○	REDONDEZ (CIRCULARIDAD)
∅	CILINDRICIDAD
△	PERFIL DE CUALQUIER SUPERFICIE
∧	PERFIL DE CUALQUIER LINEA
∧	VARIACION
⊕	POSICION REAL
⊙	CONCENTRICIDAD
≡	SIMETRIA

A MENOS QUE SE ESPECIFIQUE DE OTRA MANERA, LAS TOLERANCIAS DE LAS DIMS; SON LAS SIGUIENTES:	
PULG	±.1 ±.02 ±.005 ±.0005
mm	±0.5 ±0.13 ±0.013
ANG. ± 50 GRADOS	
ELIMINAR REBABAS Y ORILLAS FILOSAS DEL BORDE.	
PULG	.003-.015 mm 0.1-0.4
FILETEAR ESQUINA: PULG .020 mm 0.5	
MAQUINAR SUPERFICIES	
PULG	125 mm .32
DIMS METRICAS MOSTRADAS [PARENTESIS]	

DIBUJADO POR:	J. NICHTER	01-30-2009
APROBADO POR:		
TERCER ANGULO DE PROYECCION	∅	FECHA EDS: 11-11-2011
		REV. FORMATO: G
CONFIDENCIAL: ESTE DIBUJO Y SU INFORMACION SON PROPIEDAD DE USO EXCLUSIVO Y CONFIDENCIAL DE REGAL-BELOIT CORPORATION. Y NO DEBERAN SER REVELADOS, DUPLICADOS, DISTRIBUIDOS O USARSE DE OTRA MANERA SIN EL CONSENTIMIENTO ESCRITO DE REGAL-BELOIT CORPORATION. -TODOS LOS DERECHOS RESERVADOS.		

DESCRIPCION:	
MODEL-SFHP-UB OUTLINE	
TAMAÑO: C	NUMERO DE DIBUJO: 9207F2
ESCALA: NONE	HOJA: 1

4

3

2

1

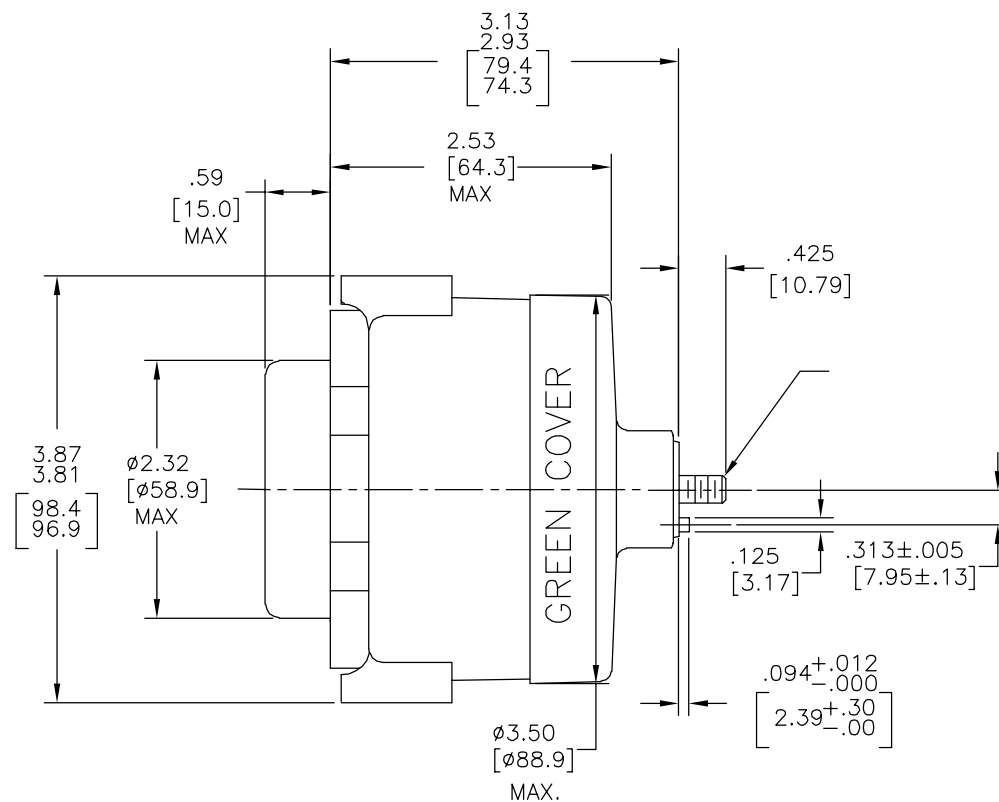
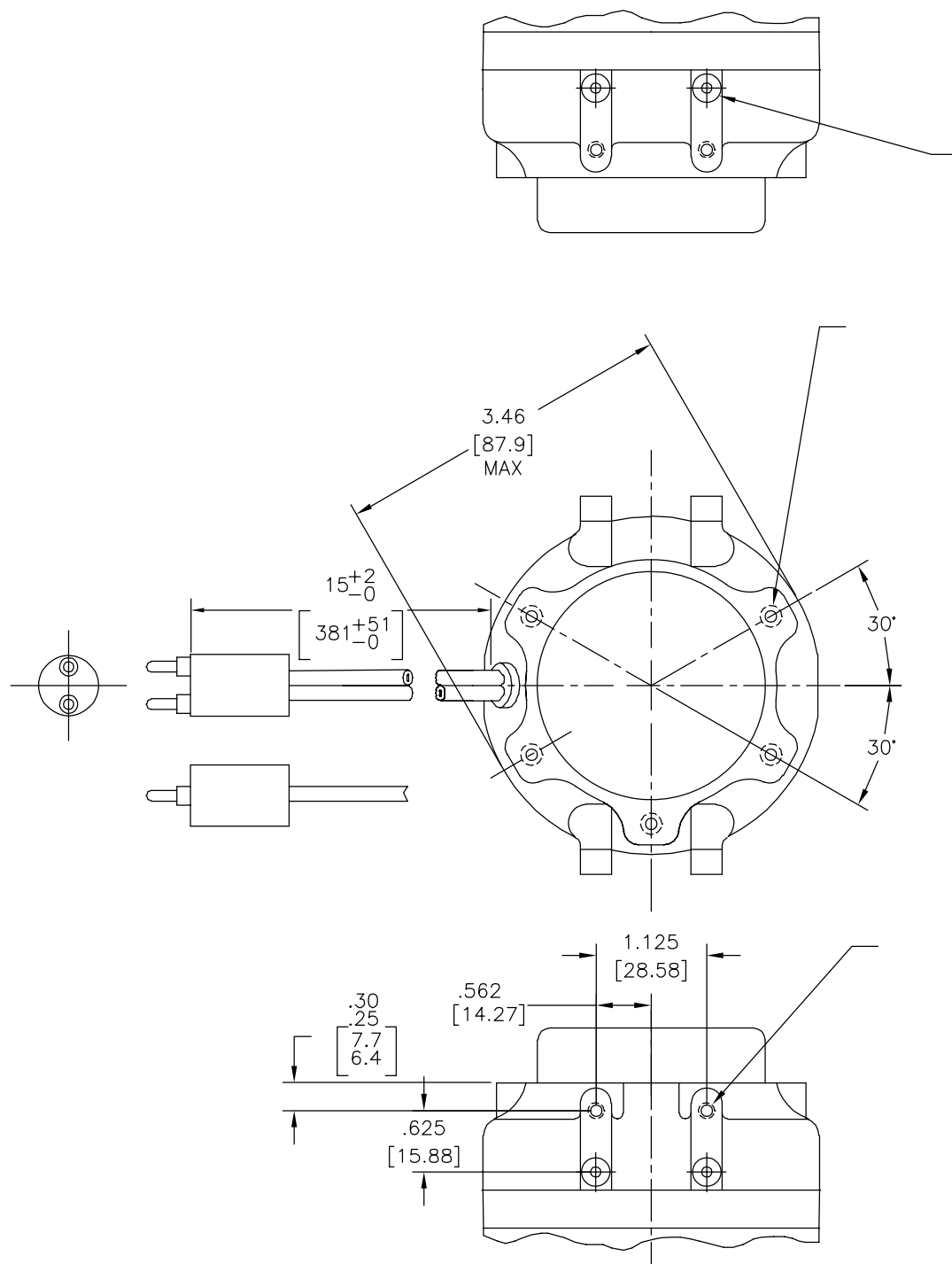
4

3

2

1

版本	ECO	编制	日期	批准	日期
C	0025432	O. CARVAJAL	04-16-2012	D. BALDERRAMA	04-16-2012



UTB1CB1551EM56
115V 60HZ CW
CUST. NO. 9207F2

形位公差	除另有注明 尺寸公差如下:
□ 平面度	英寸 X XX XXX XXXX
— 直线度	英寸 ±.1 ±.02 ±.005 ±.0005
∠ 倾斜度	毫米 ±0.5 ±0.13 ±0.013
⊥ 垂直度	角度 ±.50 度
// 平行度	清理毛刺和尖棱
○ 圆度	英寸 .003-.015 毫米 0.1-0.4
⊙ 圆柱度	内圆角
△ 面轮廓度	英寸 .020 毫米 0.5
∩ 线轮廓度	表面粗糙度
∩ 圆跳动	英制 125 米制 3.2
⊕ 位置度	米制尺寸显示在 []
⊙ 同轴度	
≡ 对称度	

ASME Y14.5M 1994

除另有注明 尺寸公差如下:	绘图:	J. NICHTER	01-30-2009
英寸 X XX XXX XXXX	批准:		
英寸 ±.1 ±.02 ±.005 ±.0005	第三角投影		
毫米 ±0.5 ±0.13 ±0.013	图框格式发布日期 11-11-2011		
角度 ±.50 度	图框格式版本 G		
清理毛刺和尖棱	名称	MODEL-SFHP-UB OUTLINE	
英寸 .003-.015 毫米 0.1-0.4	图幅	C	图号
内圆角	比例	NONE	1
英寸 .020 毫米 0.5	页号		1
表面粗糙度			
英制 125 米制 3.2			
米制尺寸显示在 []			

名称	MODEL-SFHP-UB OUTLINE		
图幅	C	图号	9207F2
比例	NONE	页号	1

机密: 本图纸及相关信息所有权归REGAL-BELOIT CORPORATION 未经REGAL-BELOIT CORPORATION书面授权, 不得泄露、 复制、传播或作其他用途。一版权所有			

4

3

2

1