

Reversing blades available on 30", 36", 42" and 48" models. Please consult factory for details. Reversing fan with cabinet will be a steel control damper.

Heavy Duty Direct Drive Wall Exhaust Fans

ADD SERIES

Designed for heavy duty, commercial and industrial exhaust applications.

These fans are typically used for high volume, high static pressure applications. The series ADD is designed and constructed for efficient & economical operations and is direct drive, therefore requiring little or no maintenance. Heavy duty cast aluminum airfoil or polyamide glass reinforced (PAG) blades are standard to ADD series fans providing maximum performance at low sound levels.

Applications include factories, warehouses, gymnasiums, underground parking garages, etc.

This fan is used for exhaust applications. Please consult factory for supply applications.

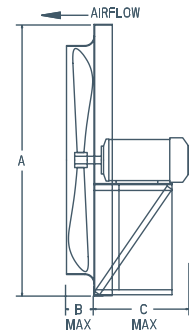
FEATURES

- Heavy gauge steel fan panel with deep spun and flared venturi for maximum efficiency.
- Heavy gauge welded steel motor supports.
- Cast aluminum airfoil or polyamide glass reinforced (PAG) blades.
- TEFC motors are standard.

Non-stock, made-to-order products are non-returnable and cannot be cancelled.

DIMENSIONS

MODEL	BLADE DIAMETER	A X A SQUARE	B	C (DIRECT DRIVE MOTOR FRAME)		
				56 - 184	213 - 215	254 - 286
ADD12	12"	16.125"	2.0"	13"	--	--
ADD14	14"	18.125"	2.5"	13"	--	--
ADD16	16"	20.125"	3.0"	13"	--	--
ADD18	18"	22.125"	3.0"	13"	--	--
ADD20	20"	24.125"	3.5"	13"	--	--
ADD24	24"	29.625"	4.0"	13"	14"	--
ADD30	30"	35.625"	4.5"	13"	14"	25"
ADD36	36"	41.625"	5.0"	13"	14"	25"
ADD42	42"	47.625"	5.0"	13"	14"	25"
ADD48	48"	53.625"	5.0"	--	14"	25"



OPTIONS



For fan complete with cabinet/guard and shutter, substitute "T" with CBS



For fan complete with front sleeve and shutter, substitute "T" with SLS



For fan with rear sleeve and back guard, substitute "T" with SLB

For a complete listing of all available options, see the Options & Accessories page.

Wall Exhaust Fan Options & Accessories

CABINET, BACK GUARD & SHUTTER (CBS)



FRONT GUARDS

Front guards available, consult factory.
Wire mesh not available on all sizes.

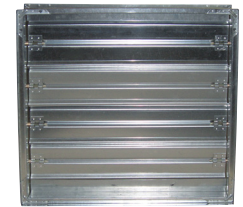


FRONT SLEEVE & SHUTTER (SLS)

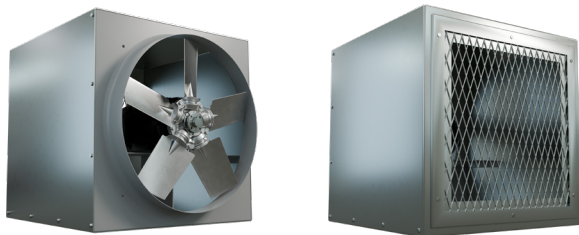


STEEL CONTROL & MOTORIZED CONTROL DAMPERS

Motorized steel control dampers can be mounted in fan cabinet or sleeve in either exhaust or intake applications. Consult factory.



REAR SLEEVE & BACK GUARD (SLB)



SPECIAL COATING

For most applications, Canarm's standard enamel paint will provide the necessary surface protection for painted parts. For special requirements, coatings such as hot dipped galvanizing and epoxy, please consult factory.

DISCONNECT SWITCHES

Wire disconnect switches are available. See Controls & Thermostats section for details.

MOTOR OPTIONS

TWO SPEED MOTOR

Two speed motors are available for some of Canarm's exhaust fans. 1800/1200 or 1800/900 RPM variable torque, single and three phase. Consult factory for available voltages and configurations.

EXPLOSION PROOF MOTORS (direct drive only)

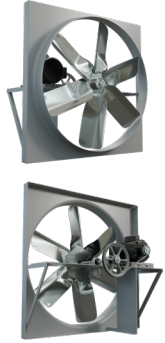
Some of Canarm exhaust fans can be equipped with Explosion Proof Motors for hazardous locations. Class I, Groups C & D - Class II, Groups F & G. Consult factory for models.

Class I, Group C	Atmospheres containing ethyl ether, ethylene, gases or vapors of equivalent hazard.
Class I, Group D	Atmospheres such as acetone, ammonia, benzene, butane, cyclopropane, ethanol, gasoline, hexane, methane, natural gas, naphtha, propane, or gasses or vapors of equivalent hazard.
Class II Group F	Atmospheres containing carbonaceous dust, including carbon black, charcoal, coal, or coke dusts that have more than 8% total entrapped volatiles, or dusts that have been sensitized by other materials so that they present an explosion hazard.
Class II Group G	Atmospheres containing combustible dusts not included in group E or F, including flour, grain, wood, plastic and chemicals.

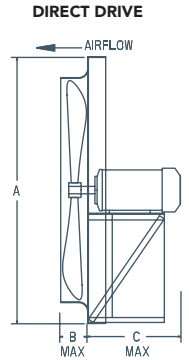
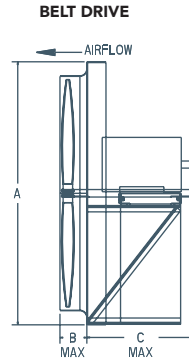
Wall Exhaust Fan Options Dimensions

for Standard Options

VENTURI



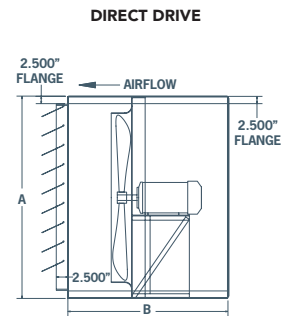
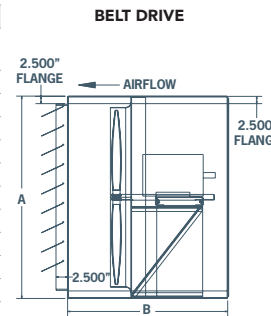
BLADE DIAMETER	A X A SQUARE	B	C				
			BELT DRIVE MOTOR FRAME		DIRECT DRIVE MOTOR FRAME		
			56 - 184	213 - 286	56 - 184	213 - 215	254 - 286
12"	16.125"	2.0"	--	--	13"	--	--
14"	18.125"	2.5"	--	--	13"	--	--
16"	20.125"	3.0"	--	--	13"	--	--
18"	22.125"	3.0"	--	--	13"	--	--
20"	24.125"	3.5"	--	--	13"	--	--
24"	29.625"	4.0"	18"	--	13"	14"	--
30"	35.625"	4.5"	18"	--	13"	14"	25"
36"	41.625"	5.0"	18"	28"	13"	14"	25"
42"	47.625"	5.0"	18"	28"	13"	14"	25"
48"	53.625"	5.0"	18"	28"	--	14"	25"
54"	59.657"	5.5"	18"	28"	--	--	--
60"	67.657"	6.0"	18"	28"	--	--	--



CABINET, BACK GUARD & SHUTTER (CBS)



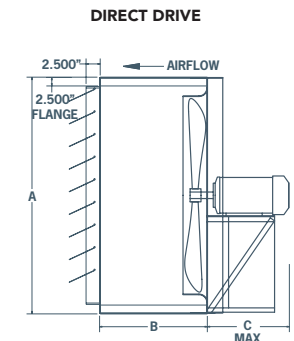
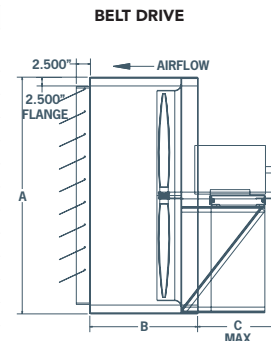
BLADE DIAMETER	A X A SQUARE	B	C				
			BELT DRIVE MOTOR FRAME		DIRECT DRIVE MOTOR FRAME		
			56 - 184	213 - 286	56 - 184	213 - 215	254 - 286
12"	16.375"	--	--	--	26"	--	--
14"	18.375"	--	--	--	26"	--	--
16"	20.375"	--	--	--	26"	--	--
18"	22.375"	--	--	--	26"	--	--
20"	24.375"	--	--	--	26"	--	--
24"	29.875"	33"	--	--	33"	33"	--
30"	35.875"	33"	--	--	33"	33"	43"
36"	41.875"	33"	43"	43"	33"	33"	43"
42"	47.875"	33"	43"	43"	33"	33"	43"
48"	53.875"	33"	43"	--	33"	43"	--
54"	59.9375"	33"	43"	--	--	--	--
60"	67.9375"	33"	43"	--	--	--	--



FRONT SLEEVE & SHUTTER (SLS)



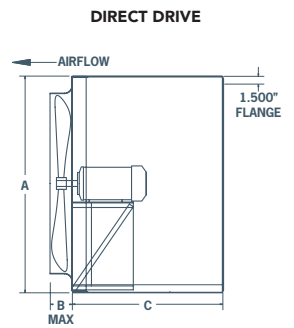
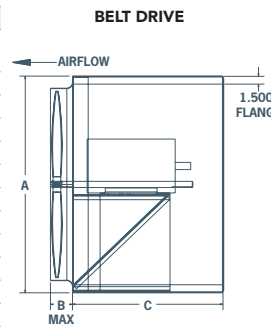
BLADE DIAMETER	A X A SQUARE	B	C				
			BELT DRIVE MOTOR FRAME		DIRECT DRIVE MOTOR FRAME		
			56 - 184	213 - 286	56 - 184	213 - 215	254 - 286
12"	16.375"	15.0"	--	--	12"	--	--
14"	18.375"	15.0"	--	--	12"	--	--
16"	20.375"	15.0"	--	--	12"	--	--
18"	22.375"	15.0"	--	--	12"	--	--
20"	24.375"	15.0"	--	--	12"	--	--
24"	29.875"	19.0"	15"	--	10"	11"	--
30"	35.875"	19.0"	15"	--	10"	11"	22"
36"	41.875"	19.0"	15"	25"	10"	11"	22"
42"	47.875"	19.0"	15"	25"	10"	11"	22"
48"	53.875"	19.0"	15"	25"	--	11"	22"
54"	59.9375"	19.0"	15"	25"	--	--	--
60"	67.9375"	19.0"	15"	25"	--	--	--



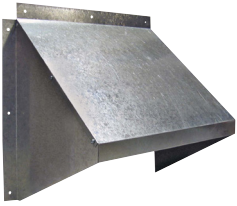
REAR SLEEVE & BACK GUARD (SLB)



BLADE DIAMETER	A X A SQUARE	B	C				
			BELT DRIVE MOTOR FRAME		DIRECT DRIVE MOTOR FRAME		
			56 - 184	213 - 286	56 - 184	213 - 215	254 - 286
12"	16.375"	2.0"	--	--	15"	--	--
14"	18.375"	2.5"	--	--	15"	--	--
16"	20.375"	3.0"	--	--	15"	--	--
18"	22.375"	3.0"	--	--	15"	--	--
20"	24.375"	3.5"	--	--	15"	--	--
24"	29.875"	4.0"	19"	--	19"	19"	--
30"	35.875"	4.5"	19"	--	19"	19"	29"
36"	41.875"	5.0"	19"	29"	19"	19"	29"
42"	47.875"	5.0"	19"	29"	19"	19"	29"
48"	53.875"	5.0"	19"	29"	--	19"	29"
54"	59.9375"	5.5"	19"	29"	--	--	--
60"	67.9375"	6.0"	19"	29"	--	--	--

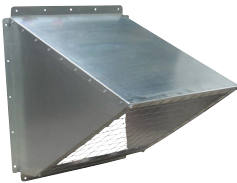


Wall Exhaust Fan Hoods



GH GALVANIZED HOODS

- Economical shipping.
- Easy to assemble, galvanized hood.
- No screens.



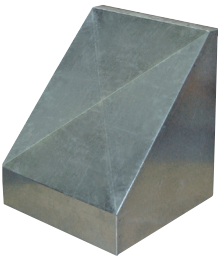
GH KNOCK DOWN HOODS

- Easy to assemble, galvanized hood.
- Includes bird screen.



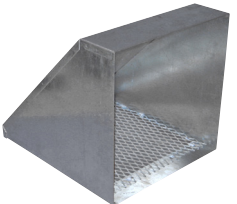
WHA HOODS

- For AX fans.
- Shipped fully assembled.
- 18 gauge galvanized weather hoods complete with bird screen.
- Optional insect screen available. Consult factory.



WHP HOODS

- For Panel fans.
- 18 gauge galvanized weather hoods complete with bird screen.
- Optional insect screen available. Consult factory.



INTAKE & EXHAUST HOODS

- Shipped fully assembled.
- 18 gauge galvanized weather hoods complete with bird screen.



PLASTIC HOODS

- Rugged, grey plastic hood.
- No screens.

HOOD MODEL	DIMENSIONS		APPROX. WEIGHT (LBS)	FANS THAT WILL FIT
	INSIDE DIMENSIONS	OUTSIDE DIMENSIONS		
GH GALVANIZED HOODS				
GH-XF12-M	14.75"W X 14.0"H	18"W X 15.75"H	4	XF12 / XB12 / SD8 / SD10 / AX8 / AX10 / AX12
GH-XF16-M	18.75"W X 17.75"H	22"W X 19.75"H	7	XF16 / XB12 / HV12 / HVA12 / ADD12 / DDP12 / DDS12 / SD12-14 / AX14-16
GH-XF20-M	22.75"W X 22"H	26"W X 23.75"H	9	XF20 / XB14 / XB16 / HV14-16 / HVA14-16 / ADD14-16 / DDP14-16 / DDS14-16 / SD16-18 / AX18-20
GH-XF24-M	26.75"W X 26"H	29"W X 27.25"H	12	XFS24
GH KNOCKDOWN HOODS				
GH-KD24	31.65"W X 31.66"H	34.65"W X 34.69"H	31	XB24 / HV24 / HVA24 / ADD24 / DDP24 / DDS24 / SD24 / AX24
GH-KD36	43.62"W X 43.93"H	46.62"W X 46.82"H	75	XB30-36 / HV30-36 / HVA30-36 / ADD30-36 / DDS30-36 / SD30-36 / AX30-36 / AX42
GH-KD48	55.62"W X 55.25"H	58.62"W X 58.82"H	TBA	XB42-48 / HV42-48 / HVA42-48 / ADD42-48 / DDS42-48 / SD42 / AX42
GH-KD60	69.76"W X 69.92"H	72.76"W X 72.95"H	TBA	XB54-60 / HV54-60 / HVA54-60 / ADD54-60
WHA HOODS				
WHA8-10	12.11"W X 12.11"H	-	13	AX08-10, SD8
WHA12	14.05"W X 14.05"H	-	16	AX12, SD10
WHA14	16.11"W X 16.11"H	-	22	AX14, SD12
WHA16	18.11"W X 18.11"H	-	26	AX16, SD14
WHA18	20.11"W X 20.11"H	-	29	AX18, SD16
WHA20	22.05"W X 22.05"H	-	31	AX20, SD18
WHA24	26.05"W X 26.05"H	-	47	AX24
WHA30	33.05"W X 33.05"H	-	59	AX30
WHA36	39.11"W X 39.11"H	-	76	AX36
WHP HOODS				
WH8-10P	14.45"W X 14.45"H	-	20	P08 / P10
WH12P	17.40"W X 17.40"H	-	16	P12
WH14P	19.20"W X 19.20"H	-	24	P14
WH16P	21.20"W X 21.20"H	-	26	P16
WH18P	23.20"W X 23.20"H	-	29	P18
WH20P	25.20"W X 25.20"H	-	44	P20
WH24P	29.15"W X 29.15"H	-	44	P24
WH30P	35.65"W X 35.65"H	-	60	P30
WH36P	41.65"W X 41.65"H	-	77	P36
EXHAUST / INTAKE / WEATHER HOODS				
EH12	16.55"W X 16.55"H	-	9	XF12 / SD8-12 / AX8-14 / XB12 / HV12 / HVA12 / ADD12 / DDP12 / DDS12
EH14	18.60"W X 18.60"H	-	15	XB14 / HV14 / HVA14 / ADD14 / DDP14 / DDS14 / SD14 / XF16 / AX16
EH16	20.60"W X 20.60"H	-	20	AX18 / SD16 / XB16 / HV16 / HVA16 / ADD16 / DDP16 / DDS16
EH18	22.55"W X 22.55"H	-	31	SD18 / XB18 / HV18 / HVA18 / ADD18 / DDP18 / DDS18 / XF20 / AX20
EH20	24.55"W X 24.55"H	-	44	SD20 / XB20 / XF24 / HV20 / HVA20 / ADD20 / DDP20 / DDS20
EH24	30.05"W X 30.05"H	-	60	SD24 / AX24 / XB24 / ADD24 / HV24 / HVA24 / DDP24 / DDS24
EH30	36.35"W X 36.35"H	-	72	SD30 / AX30 / XB30 / HV30 / HVA30 / ADD30 / DDS30 / JFHVA24
EH36	42.30"W X 42.30"H	-	104	SD36 / AX36 / XB36 / HV36 / HVA36 / ADD36 / DDS36 / JFHVA30
EH42	48.63"W X 48.63"H	-	163	XB42 / HV42 / HVA42 / ADD42 / DDS42 / JFHVA36 / SD42 / AX42
EH48	54.64"W X 54.64"H	-	TBA	XB48 / HV48 / HVA48 / ADD48 / DDS48 / JFHVA42
EH54	61.20"W X 61.20"H	-	TBA	XB54 / HV54 / HVA54 / ADD54 / JFHVA48
EH60	69.39"W X 69.39"H	-	TBA	XB60 / HV60 / HVA60 / ADD60
PLASTIC HOODS				
HFP-18G	21.50"W X 21.75"H	-	9	S8 / S10 / S12 / S14 / S16 / S18V / AX08 / AX10 / AX12 / AX14 / AX16 / AX18
HFP-24G	27.50"W X 27.75"H	-	13	S20 / S24 AX20 / AX24

Wall Fan Filter Section

FOR SUPPLY & EXHAUST

Fits models: XB, SXB, HV, HVA, ADD, DDP and DDS

FEATURES

- Filter sections are available in eight sizes from 24" to 60" wall mount propeller fans.
- Filters are accessible through bolted side panel for maintenance or replacement.
- Permanent expanded aluminum filters have large surface area for efficient filtration.
- Washable filters for easy cleaning (remove filter from cabinet for washing).
- Flanged or sleeve inlets side suitable for different designs.
- Filter sections could be used for intake or exhaust filtration.
- Shipped assembled or knock down for easy field assembly.

Rear sleeve option required to connect filter section to wall fan.

DIMENSIONS

FAN SIZE	FLANGE MOUNT	SLEEVE MOUNT	A	B	B2	# OF FILTERS
				FLANGE MOUNT	SLEEVE MOUNT	
24"	FB24	FBS24	30 1/2"	22 3/8"	28 3/8"	4
30"	FB30	FBS30	36 1/2"	25 1/4"	31 1/4"	4
36"	FB36	FBS36	42 1/2"	21 5/8"	27 5/8"	4
42"	FB42	FBS42	48 1/8"	28 1/4"	34 1/4"	9
48"	FB48	FBS48	54 1/4"	26 3/8"	32 3/8"	9
54"	FB54	FBS54	60 1/2"	24 1/16"	30 1/16"	9
60"	FB60	FBS60	68 1/2"	27 1/4"	33 1/4"	12

