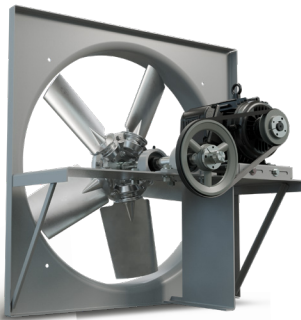




Heavy Duty Belt Drive Wall Exhaust Fans

HVA SERIES

Designed for heavy duty, commercial and industrial exhaust applications.



Heavy duty airfoil-cast aluminum or anti-static glass reinforced nylon blades are standard on HVA series fans providing maximum performance at low sound levels.

These fans are typically used for high volume, high static pressure applications. The HVA is designed and constructed for efficient and economical operations while maximizing performance for heavy duty applications.

This fan is used for exhaust applications. Please consult factory for supply applications.

FEATURES

- Heavy gauge steel fan panel with deep spun and flared venturi for maximum efficiency.
- Heavy gauge welded steel motor and bearing supports.
- Balanced cast aluminum airfoil blades (24" - 48").
- Electro anti-static glass reinforced nylon blades available in 54" - 60".
- Heavy duty cast iron pillow block bearings.
- TEFC motors are standard.

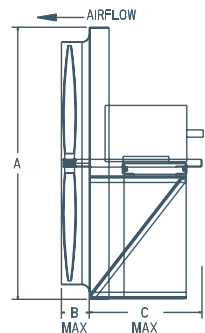


Reversing blades available on 30", 36", 42" and 48" models. Please consult factory for details. Reversing fan with cabinet will be a steel control damper.

Non-stock, made-to-order products are non-returnable and cannot be cancelled.

DIMENSIONS

| MODEL | BLADE DIAMETER | A X A SQUARE | B | C (BELT DRIVE MOTOR FRAME) | |
|-------|----------------|--------------|------|----------------------------|-----------|
| | | | | 56 - 184 | 213 - 286 |
| HVA24 | 24" | 29.625" | 4.0" | 18" | -- |
| HVA30 | 30" | 35.625" | 4.5" | 18" | -- |
| HVA36 | 36" | 41.625" | 5.0" | 18" | 28" |
| HVA42 | 42" | 47.625" | 5.0" | 18" | 28" |
| HVA48 | 48" | 53.625" | 5.0" | 18" | 28" |
| HVA54 | 54" | 59.657" | 5.5" | 18" | 28" |
| HVA60 | 60" | 67.657" | 6.0" | 18" | 28" |



OPTIONS



For fan complete with cabinet/guard and shutter, substitute "T" with CBS



For fan complete with front sleeve and shutter, substitute "T" with SLS



For fan with rear sleeve and back guard, substitute "T" with SLB

For a complete listing of all available options, see the Options & Accessories page.

Wall Exhaust Fan Options & Accessories

CABINET, BACK GUARD & SHUTTER (CBS)



FRONT GUARDS

Front guards available, consult factory.
Wire mesh not available on all sizes.

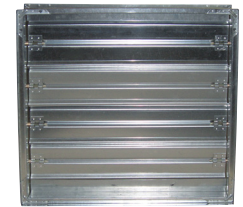


FRONT SLEEVE & SHUTTER (SLS)

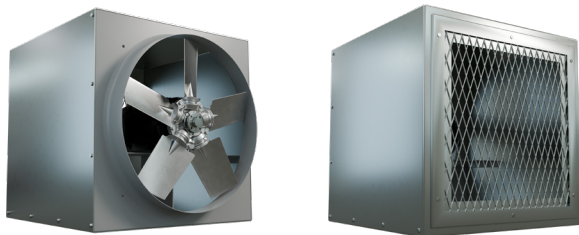


STEEL CONTROL & MOTORIZED CONTROL DAMPERS

Motorized steel control dampers can be mounted in fan cabinet or sleeve in either exhaust or intake applications. Consult factory.



REAR SLEEVE & BACK GUARD (SLB)



SPECIAL COATING

For most applications, Canarm's standard enamel paint will provide the necessary surface protection for painted parts. For special requirements, coatings such as hot dipped galvanizing and epoxy, please consult factory.

DISCONNECT SWITCHES

Wire disconnect switches are available. See Controls & Thermostats section for details.

MOTOR OPTIONS

TWO SPEED MOTOR

Two speed motors are available for some of Canarm's exhaust fans. 1800/1200 or 1800/900 RPM variable torque, single and three phase. Consult factory for available voltages and configurations.

EXPLOSION PROOF MOTORS (direct drive only)

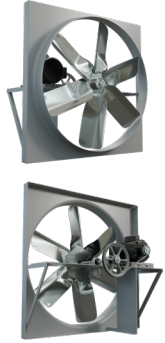
Some of Canarm exhaust fans can be equipped with Explosion Proof Motors for hazardous locations. Class I, Groups C & D - Class II, Groups F & G. Consult factory for models.

| | |
|------------------|---|
| Class I, Group C | Atmospheres containing ethyl ether, ethylene, gases or vapors of equivalent hazard. |
| Class I, Group D | Atmospheres such as acetone, ammonia, benzene, butane, cyclopropane, ethanol, gasoline, hexane, methane, natural gas, naphtha, propane, or gasses or vapors of equivalent hazard. |
| Class II Group F | Atmospheres containing carbonaceous dust, including carbon black, charcoal, coal, or coke dusts that have more than 8% total entrapped volatiles, or dusts that have been sensitized by other materials so that they present an explosion hazard. |
| Class II Group G | Atmospheres containing combustible dusts not included in group E or F, including flour, grain, wood, plastic and chemicals. |

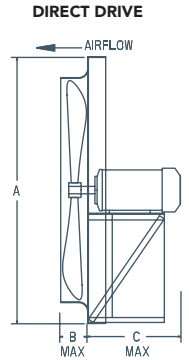
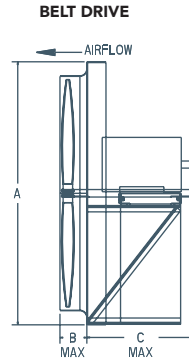
Wall Exhaust Fan Options Dimensions

for Standard Options

VENTURI



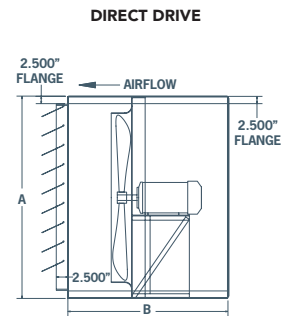
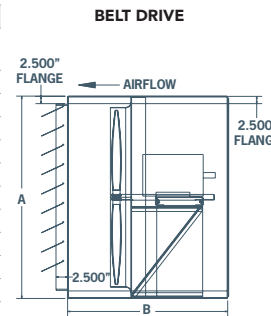
| BLADE DIAMETER | A X A SQUARE | B | C | | | | |
|----------------|--------------|------|------------------------|-----------|--------------------------|-----------|-----------|
| | | | BELT DRIVE MOTOR FRAME | | DIRECT DRIVE MOTOR FRAME | | |
| | | | 56 - 184 | 213 - 286 | 56 - 184 | 213 - 215 | 254 - 286 |
| 12" | 16.125" | 2.0" | -- | -- | 13" | -- | -- |
| 14" | 18.125" | 2.5" | -- | -- | 13" | -- | -- |
| 16" | 20.125" | 3.0" | -- | -- | 13" | -- | -- |
| 18" | 22.125" | 3.0" | -- | -- | 13" | -- | -- |
| 20" | 24.125" | 3.5" | -- | -- | 13" | -- | -- |
| 24" | 29.625" | 4.0" | 18" | -- | 13" | 14" | -- |
| 30" | 35.625" | 4.5" | 18" | -- | 13" | 14" | 25" |
| 36" | 41.625" | 5.0" | 18" | 28" | 13" | 14" | 25" |
| 42" | 47.625" | 5.0" | 18" | 28" | 13" | 14" | 25" |
| 48" | 53.625" | 5.0" | 18" | 28" | -- | 14" | 25" |
| 54" | 59.657" | 5.5" | 18" | 28" | -- | -- | -- |
| 60" | 67.657" | 6.0" | 18" | 28" | -- | -- | -- |



CABINET, BACK GUARD & SHUTTER (CBS)



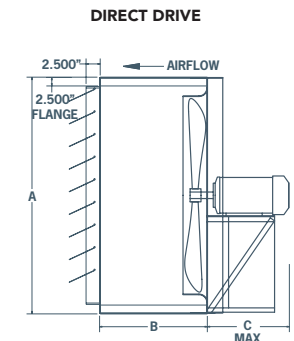
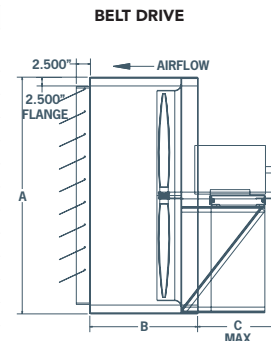
| BLADE DIAMETER | A X A SQUARE | B | C | | | | |
|----------------|--------------|-----|------------------------|-----------|--------------------------|-----------|-----------|
| | | | BELT DRIVE MOTOR FRAME | | DIRECT DRIVE MOTOR FRAME | | |
| | | | 56 - 184 | 213 - 286 | 56 - 184 | 213 - 215 | 254 - 286 |
| 12" | 16.375" | -- | -- | -- | 26" | -- | -- |
| 14" | 18.375" | -- | -- | -- | 26" | -- | -- |
| 16" | 20.375" | -- | -- | -- | 26" | -- | -- |
| 18" | 22.375" | -- | -- | -- | 26" | -- | -- |
| 20" | 24.375" | -- | -- | -- | 26" | -- | -- |
| 24" | 29.875" | 33" | -- | -- | 33" | 33" | -- |
| 30" | 35.875" | 33" | -- | -- | 33" | 33" | 43" |
| 36" | 41.875" | 33" | 43" | 43" | 33" | 33" | 43" |
| 42" | 47.875" | 33" | 43" | 43" | 33" | 33" | 43" |
| 48" | 53.875" | 33" | 43" | -- | 33" | 43" | -- |
| 54" | 59.9375" | 33" | 43" | -- | -- | -- | -- |
| 60" | 67.9375" | 33" | 43" | -- | -- | -- | -- |



FRONT SLEEVE & SHUTTER (SLS)



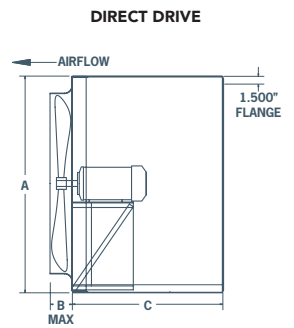
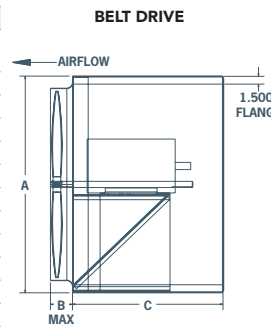
| BLADE DIAMETER | A X A SQUARE | B | C | | | | |
|----------------|--------------|-------|------------------------|-----------|--------------------------|-----------|-----------|
| | | | BELT DRIVE MOTOR FRAME | | DIRECT DRIVE MOTOR FRAME | | |
| | | | 56 - 184 | 213 - 286 | 56 - 184 | 213 - 215 | 254 - 286 |
| 12" | 16.375" | 15.0" | -- | -- | 12" | -- | -- |
| 14" | 18.375" | 15.0" | -- | -- | 12" | -- | -- |
| 16" | 20.375" | 15.0" | -- | -- | 12" | -- | -- |
| 18" | 22.375" | 15.0" | -- | -- | 12" | -- | -- |
| 20" | 24.375" | 15.0" | -- | -- | 12" | -- | -- |
| 24" | 29.875" | 19.0" | 15" | -- | 10" | 11" | -- |
| 30" | 35.875" | 19.0" | 15" | -- | 10" | 11" | 22" |
| 36" | 41.875" | 19.0" | 15" | 25" | 10" | 11" | 22" |
| 42" | 47.875" | 19.0" | 15" | 25" | 10" | 11" | 22" |
| 48" | 53.875" | 19.0" | 15" | 25" | -- | 11" | 22" |
| 54" | 59.9375" | 19.0" | 15" | 25" | -- | -- | -- |
| 60" | 67.9375" | 19.0" | 15" | 25" | -- | -- | -- |



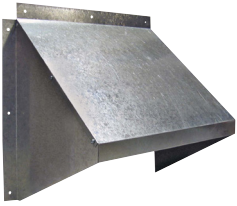
REAR SLEEVE & BACK GUARD (SLB)



| BLADE DIAMETER | A X A SQUARE | B | C | | | | |
|----------------|--------------|------|------------------------|-----------|--------------------------|-----------|-----------|
| | | | BELT DRIVE MOTOR FRAME | | DIRECT DRIVE MOTOR FRAME | | |
| | | | 56 - 184 | 213 - 286 | 56 - 184 | 213 - 215 | 254 - 286 |
| 12" | 16.375" | 2.0" | -- | -- | 15" | -- | -- |
| 14" | 18.375" | 2.5" | -- | -- | 15" | -- | -- |
| 16" | 20.375" | 3.0" | -- | -- | 15" | -- | -- |
| 18" | 22.375" | 3.0" | -- | -- | 15" | -- | -- |
| 20" | 24.375" | 3.5" | -- | -- | 15" | -- | -- |
| 24" | 29.875" | 4.0" | 19" | -- | 19" | 19" | -- |
| 30" | 35.875" | 4.5" | 19" | -- | 19" | 19" | 29" |
| 36" | 41.875" | 5.0" | 19" | 29" | 19" | 19" | 29" |
| 42" | 47.875" | 5.0" | 19" | 29" | 19" | 19" | 29" |
| 48" | 53.875" | 5.0" | 19" | 29" | -- | 19" | 29" |
| 54" | 59.9375" | 5.5" | 19" | 29" | -- | -- | -- |
| 60" | 67.9375" | 6.0" | 19" | 29" | -- | -- | -- |

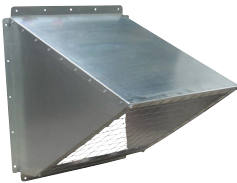


Wall Exhaust Fan Hoods



GH GALVANIZED HOODS

- Economical shipping.
- Easy to assemble, galvanized hood.
- No screens.



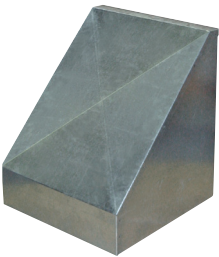
GH KNOCK DOWN HOODS

- Easy to assemble, galvanized hood.
- Includes bird screen.



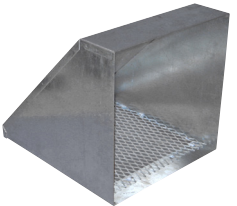
WHA HOODS

- For AX fans.
- Shipped fully assembled.
- 18 gauge galvanized weather hoods complete with bird screen.
- Optional insect screen available. Consult factory.



WHP HOODS

- For Panel fans.
- 18 gauge galvanized weather hoods complete with bird screen.
- Optional insect screen available. Consult factory.



INTAKE & EXHAUST HOODS

- Shipped fully assembled.
- 18 gauge galvanized weather hoods complete with bird screen.



PLASTIC HOODS

- Rugged, grey plastic hood.
- No screens.

| HOOD MODEL | DIMENSIONS | | APPROX. WEIGHT (LBS) | FANS THAT WILL FIT |
|---|-------------------|--------------------|----------------------|--|
| | INSIDE DIMENSIONS | OUTSIDE DIMENSIONS | | |
| GH GALVANIZED HOODS | | | | |
| GH-XF12-M | 14.75"W X 14.0"H | 18"W X 15.75"H | 4 | XF12 / XB12 / SD8 / SD10 / AX8 / AX10 / AX12 |
| GH-XF16-M | 18.75"W X 17.75"H | 22"W X 19.75"H | 7 | XF16 / XB12 / HV12 / HVA12 / ADD12 / DDP12 / DDS12 / SD12-14 / AX14-16 |
| GH-XF20-M | 22.75"W X 22"H | 26"W X 23.75"H | 9 | XF20 / XB14 / XB16 / HV14-16 / HVA14-16 / ADD14-16 / DDP14-16 / DDS14-16 / SD16-18 / AX18-20 |
| GH-XF24-M | 26.75"W X 26"H | 29"W X 27.25"H | 12 | XFS24 |
| GH KNOCKDOWN HOODS | | | | |
| GH-KD24 | 31.65"W X 31.66"H | 34.65"W X 34.69"H | 31 | XB24 / HV24 / HVA24 / ADD24 / DDP24 / DDS24 / SD24 / AX24 |
| GH-KD36 | 43.62"W X 43.93"H | 46.62"W X 46.82"H | 75 | XB30-36 / HV30-36 / HVA30-36 / ADD30-36 / DDS30-36 / SD30-36 / AX30-36 / AX42 |
| GH-KD48 | 55.62"W X 55.25"H | 58.62"W X 58.82"H | TBA | XB42-48 / HV42-48 / HVA42-48 / ADD42-48 / DDS42-48 / SD42 / AX42 |
| GH-KD60 | 69.76"W X 69.92"H | 72.76"W X 72.95"H | TBA | XB54-60 / HV54-60 / HVA54-60 / ADD54-60 |
| WHA HOODS | | | | |
| WHA8-10 | 12.11"W X 12.11"H | - | 13 | AX08-10, SD8 |
| WHA12 | 14.05"W X 14.05"H | - | 16 | AX12, SD10 |
| WHA14 | 16.11"W X 16.11"H | - | 22 | AX14, SD12 |
| WHA16 | 18.11"W X 18.11"H | - | 26 | AX16, SD14 |
| WHA18 | 20.11"W X 20.11"H | - | 29 | AX18, SD16 |
| WHA20 | 22.05"W X 22.05"H | - | 31 | AX20, SD18 |
| WHA24 | 26.05"W X 26.05"H | - | 47 | AX24 |
| WHA30 | 33.05"W X 33.05"H | - | 59 | AX30 |
| WHA36 | 39.11"W X 39.11"H | - | 76 | AX36 |
| WHP HOODS | | | | |
| WH8-10P | 14.45"W X 14.45"H | - | 20 | P08 / P10 |
| WH12P | 17.40"W X 17.40"H | - | 16 | P12 |
| WH14P | 19.20"W X 19.20"H | - | 24 | P14 |
| WH16P | 21.20"W X 21.20"H | - | 26 | P16 |
| WH18P | 23.20"W X 23.20"H | - | 29 | P18 |
| WH20P | 25.20"W X 25.20"H | - | 44 | P20 |
| WH24P | 29.15"W X 29.15"H | - | 44 | P24 |
| WH30P | 35.65"W X 35.65"H | - | 60 | P30 |
| WH36P | 41.65"W X 41.65"H | - | 77 | P36 |
| EXHAUST / INTAKE / WEATHER HOODS | | | | |
| EH12 | 16.55"W X 16.55"H | - | 9 | XF12 / SD8-12 / AX8-14 / XB12 / HV12 / HVA12 / ADD12 / DDP12 / DDS12 |
| EH14 | 18.60"W X 18.60"H | - | 15 | XB14 / HV14 / HVA14 / ADD14 / DDP14 / DDS14 / SD14 / XF16 / AX16 |
| EH16 | 20.60"W X 20.60"H | - | 20 | AX18 / SD16 / XB16 / HV16 / HVA16 / ADD16 / DDP16 / DDS16 |
| EH18 | 22.55"W X 22.55"H | - | 31 | SD18 / XB18 / HV18 / HVA18 / ADD18 / DDP18 / DDS18 / XF20 / AX20 |
| EH20 | 24.55"W X 24.55"H | - | 44 | SD20 / XB20 / XF24 / HV20 / HVA20 / ADD20 / DDP20 / DDS20 |
| EH24 | 30.05"W X 30.05"H | - | 60 | SD24 / AX24 / XB24 / ADD24 / HV24 / HVA24 / DDP24 / DDS24 |
| EH30 | 36.35"W X 36.35"H | - | 72 | SD30 / AX30 / XB30 / HV30 / HVA30 / ADD30 / DDS30 / JFHVA24 |
| EH36 | 42.30"W X 42.30"H | - | 104 | SD36 / AX36 / XB36 / HV36 / HVA36 / ADD36 / DDS36 / JFHVA30 |
| EH42 | 48.63"W X 48.63"H | - | 163 | XB42 / HV42 / HVA42 / ADD42 / DDS42 / JFHVA36 / SD42 / AX42 |
| EH48 | 54.64"W X 54.64"H | - | TBA | XB48 / HV48 / HVA48 / ADD48 / DDS48 / JFHVA42 |
| EH54 | 61.20"W X 61.20"H | - | TBA | XB54 / HV54 / HVA54 / ADD54 / JFHVA48 |
| EH60 | 69.39"W X 69.39"H | - | TBA | XB60 / HV60 / HVA60 / ADD60 |
| PLASTIC HOODS | | | | |
| HFP-18G | 21.50"W X 21.75"H | - | 9 | S8 / S10 / S12 / S14 / S16 / S18V / AX08 / AX10 / AX12 / AX14 / AX16 / AX18 |
| HFP-24G | 27.50"W X 27.75"H | - | 13 | S20 / S24 AX20 / AX24 |

Wall Fan Filter Section

FOR SUPPLY & EXHAUST

Fits models: XB, SXB, HV, HVA, ADD, DDP and DDS

FEATURES

- Filter sections are available in eight sizes from 24" to 60" wall mount propeller fans.
- Filters are accessible through bolted side panel for maintenance or replacement.
- Permanent expanded aluminum filters have large surface area for efficient filtration.
- Washable filters for easy cleaning (remove filter from cabinet for washing).
- Flanged or sleeve inlets side suitable for different designs.
- Filter sections could be used for intake or exhaust filtration.
- Shipped assembled or knock down for easy field assembly.

Rear sleeve option required to connect filter section to wall fan.

DIMENSIONS

| FAN SIZE | FLANGE MOUNT | SLEEVE MOUNT | A | B | B2 | # OF FILTERS |
|----------|--------------|--------------|---------|--------------|--------------|--------------|
| | | | | FLANGE MOUNT | SLEEVE MOUNT | |
| 24" | FB24 | FBS24 | 30 1/2" | 22 3/8" | 28 3/8" | 4 |
| 30" | FB30 | FBS30 | 36 1/2" | 25 1/4" | 31 1/4" | 4 |
| 36" | FB36 | FBS36 | 42 1/2" | 21 5/8" | 27 5/8" | 4 |
| 42" | FB42 | FBS42 | 48 1/8" | 28 1/4" | 34 1/4" | 9 |
| 48" | FB48 | FBS48 | 54 1/4" | 26 3/8" | 32 3/8" | 9 |
| 54" | FB54 | FBS54 | 60 1/2" | 24 1/16" | 30 1/16" | 9 |
| 60" | FB60 | FBS60 | 68 1/2" | 27 1/4" | 33 1/4" | 12 |

