

AX - SHUTTER MOUNTED FANS

Designed for Industrial, Commercial and Farming applications.



8" & 10" MODEL

The AX series exhaust fan is a sturdily constructed, direct drive, horizontal discharge fan that is typically used for general ventilation of factories, garages, warehouses and other industrial or commercial buildings. The AX fans are available in multiple single-speed variations as well as two-speed and variable speed models. The AX series housings are constructed of heavy duty aluminum with built in shutters that automatically open when the fan starts and gravity closes when the fan stops.

Some models now available with optional DC volt motor. Call for details.

SPECIFICATIONS

SINGLE PHASE	THREE PHASE ***	BLADE DIAMETER	RPM	HP (SINGLE PHASE)	VOLTAGE (SINGLE PHASE)	AMPS (FLA) (SINGLE PHASE)	WEIGHT (LBS)	dB(A) @5 ft	CFM @ STATIC PRESSURE				FRAMING DIMENSIONS			
									0.00"	0.10"	0.125"	0.25"				
SINGLE SPEED - VARIABLE SPEED FANS																
AX12-1V	AX12-1*	12"	1700	1/3	115/230	5.0/2.5	26	63	1650	1560	1525	1400	14" X 14"			
AX12-1VHE	-	12"	1450	1/15	115	1.0	22	60	1350	1290	1275	1150	14" X 14"			
AX14-1V	AX14-1*	14"	1700	1/3	115/230	5.0/2.5	29	67	2170	2030	1950	1900	16" X 16"			
AX14-1VHE	-	14"	1450	1/15	115	1.0	25	64	1600	1525	1500	1300	16" X 16"			
AX16-1V	AX16-1*	16"	1700	1/3	115/230	5.0/2.5	30	68	2570	2470	2410	2260	18" X 18"			
AX16-1VHE	-	16"	1450	1/15	115	1.0	26	63	1850	1750	1700	1550	18" X 18"			
AX18-1V	AX18-1*	18"	1700	1/3	115/230	3.8/1.9	36	71	3150	3000	2900	2575	20" X 20"			
AX20-1V	AX20-1*	20"	1700	1/3	115/230	3.8/1.9	39	77	3620	3420	3340	3120	22" X 22"			
AX24-1V	-	24"	1100	1/3	115/230	4.4/2.2	43	72	5500	5400	5310	5100	26" X 26"			
-	AX24-1*	24"	1100	1/3	-	-	43	77	5500	5400	5310	5100	26" X 26"			
SINGLE SPEED FANS																
AX12-2	--	12"	1625	1/4	115	2.7	27	63	1640	1540	1510	1390	14" X 14"			
AX14-2	--	14"	1625	1/4	115	2.7	30	67	2170	2070	2030	1860	16" X 16"			
AX16-2	--	16"	1625	1/4	115	2.7	31	68	2370	2270	2210	2060	18" X 18"			
AX18-2	--	18"	1625	1/3	115	4.1	37	73	3200	3090	3040	2920	20" X 20"			
AX20-2	--	20"	1625	1/3	115	4.1	39	77	3420	3220	3170	2920	22" X 22"			
AX24-2	--	24"	1100	1/3	115	5.4	45	70	5000	4500	4300	3600	26" X 26"			
AX30-2	--	30"	1100	1/3	115/230	4.4/2.2	72	82	8000	7000	6000	5000	33" X 33"			
AX36-7	AX36-7M**	36"	850	1/2	115/230	6.6/3.3	88	72	10000	8500	8000	6200	39" X 39"			
AX42-7	--	42"	850	1	230	5	122	84					45" X 45"			
									BHP	FEI	BHP	FEI	BHP	FEI		
									0.89	1.32	0.92	1.43	0.92	1.44	0.97	1.36
									13100	11860	11400	8800				
TWO SPEED FANS																
*NOTE: 8 & 10" models feature a cord & plug and pull chain control.																
*AX08	--	8"	1600/1300	25W	115	0.2	13	48	360/292	270/150	230/110	-	12"X12"			
*AX10	--	10"	1480/1150	60W	115	0.5	15	55	500/388	420/300	400/250	-	12"X12"			
AX12-3	--	12"	1725/1140	1/4	115	3.4	27	64	1670/1100	1600/950	1575/900	1450/625	14" X 14"			
AX14-3	--	14"	1725/1140	1/4	115	3.4	31	67	2190/1440	2080/1325	2000/1300	1950/850	16" X 16"			
AX16-3	--	16"	1725/1140	1/4	115	3.4	34	69	2580/1770	2480/1620	2430/1560	2270/1020	18" X 18"			
AX18-3	--	18"	1725/1140	1/3	115	5.5/2.9	38	74	3200/2310	3050/2030	2950/1960	2625/1750	20" X 20"			
AX20-3	--	20"	1725/1140	1/3	115	5.5/2.9	41	77	3640/2420	3440/2270	3360/2210	3140/1890	22" X 22"			
SINGLE SPEED EXPLOSION PROOF FANS (Explosion Proof Motors are DIVISION 1 - CLASS 1 - GROUP C & D and CLASS 2 - GROUP F & G)																
Class I, Group C - Atmospheres containing ethyl ether, ethylene, gases or vapors of equivalent hazard.																
Class I, Group D - Atmospheres such as acetone, ammonia, benzene, butane, cyclopropane, ethanol, gasoline, hexane, methane, natural gas, naphtha, propane, or gases or vapors of equivalent hazard.																
Class II Group F - Atmospheres containing carbonaceous dust, including carbon black, charcoal, coal, or coke dusts that have more than 8% total entrapped volatiles, or dusts that have been sensitized by other materials so that they present an explosion hazard.																
Class II Group G - Atmospheres containing combustible dusts not included in group E or F, including flour, grain, wood, plastic and chemicals.																
AX12-4	AX12-4*	12"	1725	1/3	115/230	6.6/3.3	49	63	1670	1600	1575	1450	14" X 14"			
AX14-4	AX14-4*	14"	1725	1/3	115/230	6.6/3.3	49	67	2190	2080	2000	1950	16" X 16"			
AX16-4	AX16-4*	16"	1725	1/3	115/230	6.6/3.3	51	68	2580	2480	2430	2270	18" X 18"			
AX18-4	AX18-4*	18"	1725	1/3	115/230	6.6/3.3	56	73	3200	3050	2950	2625	20" X 20"			
AX20-4	AX20-4*	20"	1725	1/3	115/230	6.6/3.3	57	77	3640	3440	3360	3140	22" X 22"			
AX24-4	AX24-4*	24"	1725	1/3	115/230	6.6/3.3	57	77	5520	5410	5330	5130	26" X 26"			

For three phase motors, substitute "*" with "M" for 230/460 volt or "P" for 575 volt.
**NOTE: AX36-7M is only available in 208-230/460 volt for three phase

applications. Other voltages in single or three phase are available. 50HZ voltages are available. Consult factory.

***These models are not cETLus certified. For full performance data consult our Delair software - www.canarm.com/delair

FEATURES

- Sturdily constructed from all-aluminum extrusions.
- 8" - 24" models have heavy wire chrome plated OSHA guards on intake side of fan. 30", 36" & 42" models have grey powder coated guards.
- Totally enclosed air over motor with overload protection.
- Ships fully assembled.

NOTE: 8 & 10" models feature a cord & plug and pull chain control.



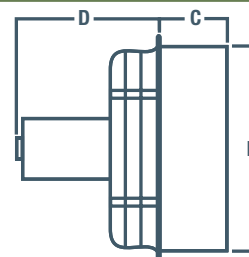
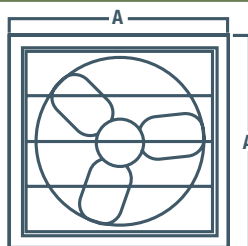
ACCESSORIES

- Speed controls
- Thermostats
- Front guard
- Weather hoods

For a complete listing on all available accessories, see page D17
For a complete listing of all available hoods, see page D11.
For all available control options, see Controls & Thermostats tab.

DIMENSIONS

MODEL	A	B	C	D	
				AX	AX-4~
AX08	14 3/4"	11 3/4"	5"	3 7/8"	-
AX10	14 3/4"	11 3/4"	5"	3 7/8"	-
AX12	16 3/4"	13 3/4"	5"	11"	13 3/4"
AX14	18 3/4"	15 3/4"	5"	11"	13 3/4"
AX16	20 3/4"	17 3/4"	5"	11"	13 3/4"
AX18	22 3/4"	19 3/4"	5"	12"	14"
AX20	24 3/4"	21 3/4"	5"	12"	14"
AX24	28 3/4"	25 3/4"	5"	12"	13 3/4"
AX30	35 1/4"	32 3/4"	5"	13"	-
AX36	41 1/4"	38 3/4"	5"	12"	-
AX42	47 3/4"	44 3/4"	5"	11"	-



~ Explosion Proof Motor, 50 Hz or 3 phase



EXPLOSION PROOF MOTOR