

BRIDGESTONE

HOSEPOWER®



HVAC HEATING & COOLING SOLUTIONS

"A Proud Member of the SmartEquip Network" **SmartEquip™**

HEATING & COOLING DUCT HOSES



High quality ducting available in a multitude of color combinations, constructions, and cuff options to accommodate all environments and applications.

Features:

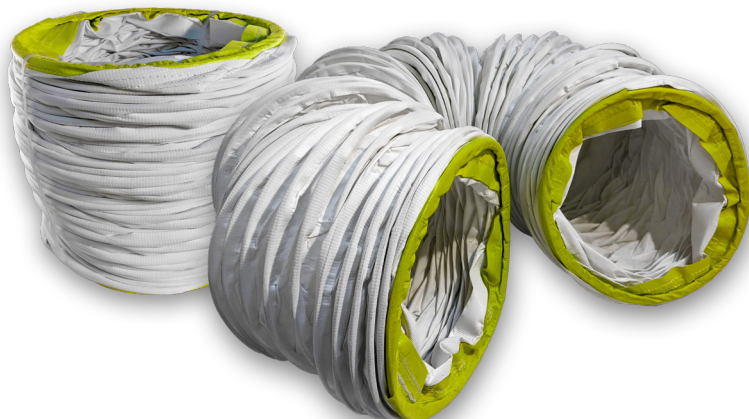
- Expanded pitch allows compression up to one-seventh of its total extended length
- Excellent UV stabilization with mold and mildew inhibitors for rigorous outdoor use
- Flame resistant in accordance with UL94 VTM-O, California Fire Marshal, and NFPA 701 Method 2 specifications



Size (ID)	10", 12", 14", 16", 18", 20", 24"
Length	15', 25'
Inside Diameter	6"-36" (150-900 mm)
Color	White/White, White/Black, Yellow/Black, Black/Black
Temperature	-40°F to 180°F (-40°C to 82°C) - (Higher-Temp. Available Call for details)
Standard End	Wire rope, Hoop coupling
Optional End Finishes	Belt cuff, Soft cuff, Screw clamp cuff, Zipper cuff
Optional Wearstrip	Heavy-duty extruded, or Light-duty PVC fabric

****Additional lengths, color combinations, end figurations, and ducting types are available. Please call for more details.**

DU90 (4" Pitch Return Duct) comes standard with safety green end rings for easy identification and separation from supply duct, and inventory management.



DU90 & DU91 BI-DIRECTIONAL

Application:

HVAC conditioned air supply (7" pitch) and return (4" pitch). Duct is phthalate free, UV, mold, and mildew resistant. Welded construction allows Bi-Directional air flow. Hooped ends standard.

*Other end finishes available upon request.



Part No.	Size & Length	Type	Max Temp.	Pitch	Grommets/ Non-Grommets	Body Color/ Wear Strip
DU90-1025WW	10" x 25'	Air Ducting - Return	180°F	4"	Non-Grommets	White/White
DU90-1225WW	12" x 25'	Air Ducting - Return	180°F	4"	Non-Grommets	White/White
DU90-2025WW	20" x 25'	Air Ducting - Return	180°F	4"	Non-Grommets	White/White
DU91-1215WW	12" x 15'	Air Ducting - Supply	180°F	7"	Non-Grommets	White/White
DU91-1225WW	12" x 25'	Air Ducting - Supply	180°F	7"	Non-Grommets	White/White
DU91-1415WW	14" x 15'	Air Ducting - Supply	180°F	7"	Non-Grommets	White/White
DU91-1425WW	14" x 25'	Air Ducting - Supply	180°F	7"	Non-Grommets	White/White
DU91-1615WW	16" x 15'	Air Ducting - Supply	180°F	7"	Non-Grommets	White/White
DU91-1625WW	16" x 25'	Air Ducting - Supply	180°F	7"	Non-Grommets	White/White
DU91-1825WW	18" x 25'	Air Ducting - Supply	180°F	7"	Non-Grommets	White/White
DU91-2025WW	20" x 25'	Air Ducting - Supply	180°F	7"	Non-Grommets	White/White
DU91-2425WW	24" x 25'	Air Ducting - Supply	180°F	7"	Non-Grommets	White/White



Part No.	Size & Length	Type	Max Temp.	Pitch	Grommets/ Non-Grommets	Body Color/ Wear Strip
DU90-1025WB	10" x 25'	Air Ducting - Return	180°F	4"	Non-Grommets	White/Black
DU90-1225WB	12" x 25'	Air Ducting - Return	180°F	4"	Non-Grommets	White/Black
DU90-2025WB	20" x 25'	Air Ducting - Return	180°F	4"	Non-Grommets	White/Black
DU91-1225WB	12" x 25'	Air Ducting - Supply	180°F	7"	Non-Grommets	White/Black
DU91-1425WB	14" x 25'	Air Ducting - Supply	180°F	7"	Non-Grommets	White/Black
DU91-1625WB	16" x 25'	Air Ducting - Supply	180°F	7"	Non-Grommets	White/Black
DU91-1825WB	18" x 25'	Air Ducting - Supply	180°F	7"	Non-Grommets	White/Black
DU91-2025WB	20" x 25'	Air Ducting - Supply	180°F	7"	Non-Grommets	White/Black
DU91-2425WB	24" x 25'	Air Ducting - Supply	180°F	7"	Non-Grommets	White/Black



Part No.	Size & Length	Type	Max Temp.	Pitch	Grommets/ Non-Grommets	Body Color/ Wear Strip
DU90-1025YB	10" x 25'	Air Ducting - Return	180°F	4"	Non-Grommets	Yellow/Black
DU90-1225YB	12" x 25'	Air Ducting - Return	180°F	4"	Non-Grommets	Yellow/Black
DU90-2025YB	20" x 25'	Air Ducting - Return	180°F	4"	Non-Grommets	Yellow/Black
DU91-1225YB	12" x 25'	Air Ducting - Supply	180°F	7"	Non-Grommets	Yellow/Black
DU91-1425YB	14" x 25'	Air Ducting - Supply	180°F	7"	Non-Grommets	Yellow/Black
DU91-1625YB	16" x 25'	Air Ducting - Supply	180°F	7"	Non-Grommets	Yellow/Black
DU91-1825YB	18" x 25'	Air Ducting - Supply	180°F	7"	Non-Grommets	Yellow/Black
DU91-2025YB	20" x 25'	Air Ducting - Supply	180°F	7"	Non-Grommets	Yellow/Black
DU91-2425YB	24" x 25'	Air Ducting - Supply	180°F	7"	Non-Grommets	Yellow/Black

DU93 UNI-DIRECTIONAL

Application:

HVAC conditioned air supply, and return requiring ducting to be suspended by hanging Grommets. Duct is phthalate free, UV, mold, and mildew resistant. Sewn construction allows Uni-Directional air flow. Hooped ends standard.

***Additional Colors Available Upon Request.**

*Other end finishes available upon request.



Part No.	Size & Length	Hose/Pipe/Fittings	Max Temp.	Pitch	Grommets/Non-Grommets	Body Color/Wear Strip
DU93-1425WW	14" x 25'	Air Ducting - Supply	180°F	7"	Grommets	White/White
DU93-1625WW	16" x 25'	Air Ducting - Supply	180°F	7"	Grommets	White/White
DU93-1825WW	18" x 25'	Air Ducting - Supply	180°F	7"	Grommets	White/White
DU93-2025WW	20" x 25'	Air Ducting - Supply	180°F	7"	Grommets	White/White



Part No.	Size & Length	Hose/Pipe/Fittings	Max Temp.	Pitch	Grommets/Non-Grommets	Body Color/Wear Strip
DU93-1425WB	14" x 25'	Air Ducting - Supply	180°F	7"	Grommets	White/Black
DU93-1625WB	16" x 25'	Air Ducting - Supply	180°F	7"	Grommets	White/Black
DU93-1825WB	18" x 25'	Air Ducting - Supply	180°F	7"	Grommets	White/Black
DU93-2025WB	20" x 25'	Air Ducting - Supply	180°F	7"	Grommets	White/Black

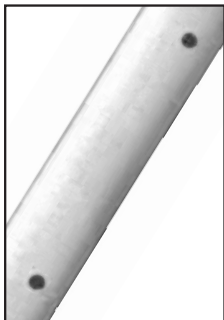


Part No.	Size & Length	Hose/Pipe/Fittings	Max Temp.	Pitch	Grommets/Non-Grommets	Body Color/Wear Strip
DU93-1425YB	14" x 25'	Air Ducting - Supply	180°F	7"	Grommets	Yellow/Black
DU93-1625YB	16" x 25'	Air Ducting - Supply	180°F	7"	Grommets	Yellow/Black
DU93-1825YB	18" x 25'	Air Ducting - Supply	180°F	7"	Grommets	Yellow/Black
DU93-2025YB	20" x 25'	Air Ducting - Supply	180°F	7"	Grommets	Yellow/Black

LAYFLAT DUCTING

Application:

Ideally suited as an economical solution for air supply over long lengths. Optional pre-cut diffusion holes allow for even air distribution.



Part No.	Hose Size & Length	Type	Max Temp.	Pitch	Diffusion Holes	Body Color/Wear Strip
DU70-10500C	10" x 500'	4mil. Layflat Air Duct	100°F	N/A	No Holes	Clear
DU70-20500C	20" x 500'	4mil. Layflat Air Duct	100°F	N/A	No Holes	Clear
DU71-10500C	10" x 500'	4mil. Layflat Air Duct	100°F	N/A	Diffusion Holes	Clear
DU71-20500C	20" x 500'	4mil. Layflat Air Duct	100°F	N/A	Diffusion Holes	Clear
DU72-10500WW	10" x 500'	13 Oz. HD Layflat Air Ducting	180°F	N/A	No Holes	White
DU72-20500WW	20" x 500'	13 Oz. HD Layflat Air Ducting	180°F	N/A	No Holes	White
DU73-10500WW	10" x 500'	13 Oz. HD Layflat Air Ducting	180°F	N/A	Diffusion Holes	White
DU73-20500WW	20" x 500'	13 Oz. HD Layflat Air Ducting	180°F	N/A	Diffusion Holes	White

DUY AIR DUCT WYE

** For both Bi-Directional & Uni-Directional ducting.



Part No.	Size	Type	Max Temp.	Body Color/ Wear Strip
DUY-12WW	12" x 12" x 12"	Ducting Wye	180°F	White/White
DUY-14WW	14" x 14" x 14"	Ducting Wye	180°F	White/White
DUY-16WW	16" x 16" x 16"	Ducting Wye	180°F	White/White
DUY-18WW	18" x 18" x 18"	Ducting Wye	180°F	White/White
DUY-20WW	20" x 20" x 20"	Ducting Wye	180°F	White/White
DUY-201212WW	20" x 12" x 12"	Ducting Wye	180°F	White/White
DUY-201414WW	20" x 14" x 14"	Ducting Wye	180°F	White/White
DUY-201616WW	20" x 16" x 16"	Ducting Wye	180°F	White/White



Part No.	Size	Type	Max Temp.	Body Color/ Wear Strip
DUY-12YY	12" x 12" x 12"	Ducting Wye	180°F	Yellow/Yellow
DUY-14YY	14" x 14" x 14"	Ducting Wye	180°F	Yellow/Yellow
DUY-16YY	16" x 16" x 16"	Ducting Wye	180°F	Yellow/Yellow
DUY-18YY	18" x 18" x 18"	Ducting Wye	180°F	Yellow/Yellow
DUY-20YY	20" x 20" x 20"	Ducting Wye	180°F	Yellow/Yellow
DUY-201212YY	20" x 12" x 12"	Ducting Wye	180°F	Yellow/Yellow
DUY-201414YY	20" x 14" x 14"	Ducting Wye	180°F	Yellow/Yellow
DUY-201616YY	20" x 16" x 16"	Ducting Wye	180°F	Yellow/Yellow

DUC PROTECTIVE CAPS

13oz. Protective cap with a ratchet strap



Part No.	Size
DUC-1200W	12"
DUC-1400W	14"
DUC-1600W	16"
DUC-1800W	18"
DUC-2000W	20"
DUC-2400W	24"



Part No.	Size
DUC-1200Y	12"
DUC-1400Y	14"
DUC-1600Y	16"
DUC-1800Y	18"
DUC-2000Y	20"
DUC-2400Y	24"

CEILING PANEL KITS

White



Kit with Strap and Buckle Ducting

Part No.	Size
DUK-1200WSB	12"
DUK-1600WSB	16"
DUK-2000WSB	20"

Black



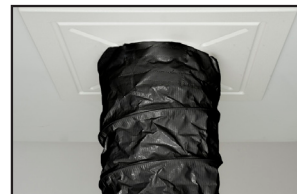
Kit with Strap and Buckle Ducting

Part No.	Size
DUK-1200BSB	12"
DUK-1600BSB	16"
DUK-2000BSB	20"



Kit with Unfinished End Ducting and Zip Ties

Part No.	Size
DUK-1200W	12"
DUK-1600W	16"
DUK-2000W	20"



Kit with Unfinished End Ducting and Zip Ties

Part No.	Size
DUK-1200B	12"
DUK-1600B	16"
DUK-2000B	20"

*8' Ducting is standard for Ceiling Panel Kits. Other lengths available upon request.

DU88 STANDARD HEATER DUCTING



Application:

Industrial, commercial, and residential work area heating, equipment heating, special events, drying, construction curing, and more. Soft-cuff and strap inlet with end ring outlet. Uni-Directional.

Construction:

Tube - Only fire resistant materials are used. Passes UL 94 V-0, NFPA 705 and NFPA 701 flame resistance tests

Reinforcement - Duct assembled using high-strength (lock-stitched) sewn construction

Cover - Black, polyester reinforced fabric with light urethane topcoat

Temperature Range:

-53°C to +190°C (-65°F to +350°F) (intermittent 375°F)

Part No.	Size & Length	Type	Max Temp.	Pitch	Grommeted/ Non-Grommeted	Body Color/ Wear Strip
DU88-1225BB	12" x 25'	Standard High-Temp.	350°F	7"	Non-Grommeted	Black/Black
DU88-1425BB	14" x 25'	Standard High-Temp.	350°F	7"	Non-Grommeted	Black/Black
DU88-1625BB	16" x 25'	Standard High-Temp.	350°F	7"	Non-Grommeted	Black/Black
DU88-1825BB	18" x 25'	Standard High-Temp.	350°F	7"	Non-Grommeted	Black/Black
DU88-2025BB	20" x 25'	Standard High-Temp.	350°F	7"	Non-Grommeted	Black/Black
DU88-2425BB	24" x 25'	Standard High-Temp.	350°F	7"	Non-Grommeted	Black/Black

DU98 COMBINATION HEATER DUCTING



Application:

Specialty fabrics are utilized to create products capable of safely delivering preheated air to occupied or unoccupied spaces, and equipment. Applications include industrial, commercial, and residential work area heating, equipment heating, special events, drying, construction curing, and more. Soft-cuff and strap inlet with end ring outlet. Uni-Directional.

Features:

- Black polyester reinforced fabric with urethane topcoat.
- High-temperature (500°F) silicone reinforced fiberglass liner on air inlet.
- Assembled with high-strength (lock-stitched) tube construction.
- Fire resistant material. Passes UL 94 V-0, NFPA 705 and NFPA 701 flame resistance tests.
- Continuous service temperature range of -65°F to +350°F (intermittent 375°F).
- Two 1" wide black webbing straps with clip buckle attached to the outlet end of each duct. To secure duct in the retracted state when product is not in use.

Part No.	Hose Size & Length	Type	Max Temp.	Pitch	Grommeted/ Non-Grommeted	Body Color/ Wear Strip
DU98-1225BB	12" x 25'	Comb. - High-Temp.	350-500°F	7"	Non-Grommeted	Black/Gray
DU98-1625BB	16" x 25'	Comb. - High-Temp.	350-500°F	7"	Non-Grommeted	Black/Gray
DU98-1825BB	18" x 25'	Comb. - High-Temp.	350-500°F	7"	Non-Grommeted	Black/Gray
DU98-2025BB	20" x 25'	Comb. - High-Temp.	350-500°F	7"	Non-Grommeted	Black/Gray
DU98-2425BB	24" x 25'	Comb. - High-Temp.	350-500°F	7"	Non-Grommeted	Black/Gray

**** 500° High Temperature Silicone Starter Section, 350°F Constant (375°F Intermittent).**

DUY AIR DUCT HIGH TEMP. WYE



Part No.	Size	Type	Max Temp.	Body Color/Wear Strip
DUY-12BB-HT	12" x 12" x 12"	Heater Wye	375°F	Black/Black
DUY-16BB-HT	16" x 16" x 16"	Heater Wye	375°F	Black/Black
DUY-18BB-HT	18" x 18" x 18"	Heater Wye	375°F	Black/Black
DUY-20BB-HT	20" x 20" x 20"	Heater Wye	375°F	Black/Black

**** For both standard & combination heater duct.**

DU95 BLACK OUT DUCTING



Application:

Ideally suited for special events and light sensitive areas requiring protection from light permeating through the ducting walls.

Part No.	Hose Size & Length	Type	Max Temp.	Pitch	Grommeted/ Non-Grommeted	Body Color/ Wear Strip
DU95-1225WW	12" x 25'	Blackout Ducting	180°F	7"	Non-Grommeted	White/White
DU95-1425WW	14" x 25'	Blackout Ducting	180°F	7"	Non-Grommeted	White/White
DU95-1625WW	16" x 25'	Blackout Ducting	180°F	7"	Non-Grommeted	White/White
DU95-1825WW	18" x 25'	Blackout Ducting	180°F	7"	Non-Grommeted	White/White
DU95-2025WW	20" x 25'	Blackout Ducting	180°F	7"	Non-Grommeted	White/White

DU96 INSULATED DUCTING



Application:

Insulated composition improves cooling equipment efficiency, helps reduce overall heat gain, and protects conditioned air over long lengths.

Part No.	Hose Size & Length	Type	Max Temp.	Pitch	Grommeted/ Non-Grommeted	Body Color/ Wear Strip
DU96-1225WW	12" x 25'	Insulated	180°F	7"	Grommeted	White/White
DU96-1425WW	14" x 25'	Insulated	180°F	7"	Grommeted	White/White
DU96-1625WW	16" x 25'	Insulated	180°F	7"	Grommeted	White/White
DU96-1825WW	18" x 25'	Insulated	180°F	7"	Grommeted	White/White
DU96-2025WW	20" x 25'	Insulated	180°F	7"	Grommeted	White/White
DU96-2425WW	24" x 25'	Insulated	180°F	7"	Grommeted	White/White

*Available in other colors upon request.

DU97 BRIDGE DUCTING



Application:

Manufactured with high-strength PVC reinforced polyester fabric. Constructed with bi-directional air-flow, continuous heavy-duty high-tensile wire helix and abrasion resistant wear-strip. Recommended for negative pressure (suction) dust collecting applications. Ideal for: Sand-blasting, painting, bridge restoration, shipyard ventilation, industrial tanks, vessels and more.

Features:

- PVC reinforced wear-strip.
- Low profile.
- 166% stronger adhesions than comparable products.
- Best weight to strength ratio in the industry.
- Passes NFPA 701 (large scale) and California Fire Marshal Title 19 (para 1237.1). Phthalate Free
- Heavy-duty reinforced PVC extruded fabric with industry leading heat-sealing technology

Part No.	Hose Size & Length	Type	Max Temp.	Pitch	Grommeted/ Non-Grommeted	Body Color/ Wear Strip
DU97-1225BO	12" x 25'	Bridge Duct	180°F	1.5"	Non-Grommeted	Black/Orange
DU97-1825BO	18" x 25'	Bridge Duct	180°F	1.5"	Non-Grommeted	Black/Orange
DU97-2025BO	20" x 25'	Bridge Duct	180°F	1.5"	Non-Grommeted	Black/Orange
DU97-2425BO	24" x 25'	Bridge Duct	180°F	1.5"	Non-Grommeted	Black/Orange

*Available in other colors upon request.

WA30 - HEAVY DUTY CHILLER HOSE



Application:

An excellent hose in HVAC Chiller application. For use on construction sites and general water service. High-pressure allows pumping against greater vertical heads.

Construction:

Tube - Black rubber

Reinforcement - Multiple plies of synthetic yarn

Cover - Black, weather and high-abrasion resistant rubber

Branding - FLEXTRAL WA30-300 3" HEAVY DUTY "CHILLER" 150 PSI MAX WP

Temperature Range:

-30°C to +85°C (-22°F to +185°F)



Part No.	Hose Size & Length	End 1	End 2	Attaching Method
WA30-300GGX025-CS	3" x 25'	Grooved End	Grooved End	Crimp Sleeve
WA30-300GGX050-CS	3" x 50'	Grooved End	Grooved End	Crimp Sleeve
WA30-400GGX025-CS	4" x 25'	Grooved End	Grooved End	Crimp Sleeve
WA30-400GGX050-CS	4" x 50'	Grooved End	Grooved End	Crimp Sleeve
WA30-600GGX025-CS	6" x 25'	Grooved End	Grooved End	Crimp Sleeve
WA30-600GGX050-CS	6" x 50'	Grooved End	Grooved End	Crimp Sleeve



Part No.	Hose Size & Length	End 1	End 2	Attaching Method
WA30-200CEX025-BR	2" x 25'	Fem. Cam Brass	Male Cam Brass	Crimp Sleeve
WA30-200CEX050-BR	2" x 50'	Fem. Cam Brass	Male Cam Brass	Crimp Sleeve
WA30-300CEX025-BR	3" x 25'	Fem. Cam Brass	Male Cam Brass	Crimp Sleeve
WA30-300CEX050-BR	3" x 50'	Fem. Cam Brass	Male Cam Brass	Crimp Sleeve
WA30-400CEX025-BR	4" x 25'	Fem. Cam Brass	Male Cam Brass	Crimp Sleeve
WA30-400CEX050-BR	4" x 50'	Fem. Cam Brass	Male Cam Brass	Crimp Sleeve

**Standard 6" - 8" camlocks are not recommended for HVAC chiller systems. Call about other alternatives.



Part No.	Hose Size & Length	End 1	End 2	Attaching Method
WA30-300FLX025-CS-1	3" x 25'	150# Fixed Flange	150# Floating Flange	Crimp Sleeve
WA30-300FLX050-CS-1	3" x 50'	150# Fixed Flange	150# Floating Flange	Crimp Sleeve
WA30-400FLX025-CS-1	4" x 25'	150# Fixed Flange	150# Floating Flange	Crimp Sleeve
WA30-400FLX050-CS-1	4" x 50'	150# Fixed Flange	150# Floating Flange	Crimp Sleeve
WA30-600FLX025-CS-1	6" x 25'	150# Fixed Flange	150# Floating Flange	Crimp Sleeve
WA30-600FLX050-CS-1	6" x 50'	150# Fixed Flange	150# Floating Flange	Crimp Sleeve

*Call for additional fittings & lengths.

WA20 - NITRILE STANDARD CHILLER HOSE



Application:

A premium high-pressure standard PVC/nitrile layflat hose, suited ideally for standard chiller applications, mining, construction, agriculture, water jetting, dewatering, industrial wash down, submersible pump discharge applications. This hose has excellent abrasion and weathering resistance and limited oil resistance.

Construction:

Tube - Black, abrasion and oil resistant nitrile / PVC

Reinforcement - One-piece through the weave

Cover - Black, ribbed abrasion, weather and oil resistant nitrile / PVC

Branding - FLEXTRAL WA20-200 2" 300 PSI MAX WP

Temperature Range:

-46°C to +80°C (-50°F to +176°F)



Part No.	Hose Size & Length	End 1	End 2	Attaching Method
WA20-300GGX025-CS	3" x 25'	Grooved End	Grooved End	Crimp Sleeve
WA20-300GGX050-CS	3" x 50'	Grooved End	Grooved End	Crimp Sleeve
WA20-400GGX025-CS	4" x 25'	Grooved End	Grooved End	Crimp Sleeve
WA20-400GGX050-CS	4" x 50'	Grooved End	Grooved End	Crimp Sleeve
WA20-600GGX025-CS	6" x 25'	Grooved End	Grooved End	Crimp Sleeve
WA20-600GGX050-CS	6" x 50'	Grooved End	Grooved End	Crimp Sleeve



Part No.	Hose Size & Length	End 1	End 2	Attaching Method
WA20-200CEX025-BR	2" x 25'	Fem Cam Brass	Male Cam Brass	Crimp Sleeve
WA20-200CEX050-BR	2" x 50'	Fem Cam Brass	Male Cam Brass	Crimp Sleeve
WA20-300CEX025-BR	3" x 25'	Fem Cam Brass	Male Cam Brass	Crimp Sleeve
WA20-300CEX050-BR	3" x 50'	Fem Cam Brass	Male Cam Brass	Crimp Sleeve
WA20-400CEX025-BR	4" x 25'	Fem Cam Brass	Male Cam Brass	Crimp Sleeve
WA20-400CEX050-BR	4" x 50'	Fem Cam Brass	Male Cam Brass	Crimp Sleeve



Part No.	Hose Size & Length	End 1	End 2	Attaching Method
WA20-300FLX025-CS-1	3" x 25'	150# Fixed Flange	150# Floating Flange	Crimp Sleeve
WA20-300FLX050-CS-1	3" x 50'	150# Fixed Flange	150# Floating Flange	Crimp Sleeve
WA20-400FLX025-CS-1	4" x 25'	150# Fixed Flange	150# Floating Flange	Crimp Sleeve
WA20-400FLX050-CS-1	4" x 50'	150# Fixed Flange	150# Floating Flange	Crimp Sleeve
WA20-600FLX025-CS-1	6" x 25'	150# Fixed Flange	150# Floating Flange	Crimp Sleeve
WA20-600FLX050-CS-1	6" x 50'	150# Fixed Flange	150# Floating Flange	Crimp Sleeve

*Call for additional fittings & lengths.

WA35 SINGLE JACKET - INDUSTRIAL MILL DISCHARGE



Application:

Heavy-duty pump discharge and washdown hose, lightweight and layflat. Not approved for fire fighting service.

Construction:

Tube - Synthetic rubber blend
Cover - Single jacket, white 100% polyester

Temperature Range:

-17°C to +82°C (0°F to +180°F)



Single Jacket Mill Hose

Part No.	Hose Size & Length	Fitting Material	End 1	End 2	Attaching Method
WA35-150NPSE050-AL	1½" x 50'	Alum.	M-NPSH	F-NPSH	Expanded
WA35-150NSTE050-AL	1½" x 50'	Alum.	M-NST	F-NST	Expanded
WA35-200NPSE050-AL	2" x 50'	Alum.	M-NPSH	F-NPSH	Expanded
WA35-200CE050-AL	2" x 50'	Alum.	Male Cam	Fem Cam	Preformed Band
WA35-200CE100-AL	2" x 100'	Alum.	Male Cam	Fem Cam	Preformed Band
WA35-250NPSE050-AL	2½" x 50'	Alum.	M-NPSH	F-NPSH	Expanded
WA35-250NSTE050-AL	2½" x 50'	Alum.	M-NST	F-NST	Expanded
WA35-300MFIPT050-AL	3" x 50'	Alum.	M-NPSH	F-NPSH	Preformed Band
WA35-300CE050-AL	3" x 50'	Alum.	Male Cam	Fem Cam	Preformed Band
WA35-300CE100-AL	3" x 100'	Alum.	Male Cam	Fem Cam	Preformed Band
WA35-400MFIPT050-AL	4" x 50'	Alum.	M-NPSH	F-NPSH	Preformed Band

WA38 DOUBLE JACKET - INDUSTRIAL MILL DISCHARGE



Application:

Heavy-duty pump discharge and washdown hose, lightweight and layflat. Not approved for fire fighting service.

Construction:

Tube - Synthetic rubber blend
Cover - Double jacket white 100% polyester

Temperature Range:

-17°C to +82°C (0°F to +180°F)



Double Jacket Mill Hose

Part No.	Hose Size & Length	Fitting Material	End 1	End 2	Attaching Method
WA38-150NPSE050-AL	1½" x 50'	Alum.	M-NPSH	F-NPSH	Expanded
WA38-150NSTE050-AL	1½" x 50'	Alum.	M-NST	F-NST	Expanded
WA38-250NPSE050-AL	2½" x 50'	Alum.	M-NPSH	F-NPSH	Expanded
WA38-250NSTE050-AL	2½" x 50'	Alum.	M-NST	F-NST	Expanded

*Popular assemblies listed above, additional sizes and configurations available.

WA50 - SUCTION HOSE ASSEMBLIES



Application:

A heavy-duty rubber suction hose for construction, quarries, mining, dewatering, heavy-duty applications, and general use. Suitable for full vacuum.

Construction:

Tube - Black smooth rubber

Reinforcement - Synthetic yarn with a wire helix

Cover - Black, weather and abrasion resistant rubber

Branding - FLEXTRAL WA50-200 2" RUBBER WATER SUCTION HOSE 150 PSI MAX WP

Temperature Range:

-32°C to +85°C (-25°F to +185°F)



Part No.	Hose Size & Length	End 1	End 2	Attaching Method
WA50-300GGX025-CS	3" x 25'	Grooved End	Grooved End	Crimp Sleeve
WA50-300GGX050-CS	3" x 50'	Grooved End	Grooved End	Crimp Sleeve
WA50-400GGX025-CS	4" x 25'	Grooved End	Grooved End	Crimp Sleeve
WA50-400GGX050-CS	4" x 50'	Grooved End	Grooved End	Crimp Sleeve
WA50-600GGX025-CS	6" x 25'	Grooved End	Grooved End	Crimp Sleeve
WA50-600GGX050-CS	6" x 50'	Grooved End	Grooved End	Crimp Sleeve



Part No.	Hose Size & Length	End 1	End 2	Attaching Method
WA50-200CEX025-BR	2" x 25'	Fem Cam Brass	Male Cam Brass	Crimp Sleeve
WA50-200CEX050-BR	2" x 50'	Fem Cam Brass	Male Cam Brass	Crimp Sleeve
WA50-300CEX025-BR	3" x 25'	Fem Cam Brass	Male Cam Brass	Crimp Sleeve
WA50-300CEX050-BR	3" x 50'	Fem Cam Brass	Male Cam Brass	Crimp Sleeve
WA50-400CEX025-BR	4" x 25'	Fem Cam Brass	Male Cam Brass	Crimp Sleeve
WA50-400CEX050-BR	4" x 50'	Fem Cam Brass	Male Cam Brass	Crimp Sleeve

**Standard 6" - 8" camlocks are not recommended for HVAC chiller systems. Call about other alternatives.



Part No.	Hose Size & Length	End 1	End 2	Attaching Method
WA50-200CEX020-AL	2" x 20'	Fem Cam Alum.	Male Cam Alum.	Crimp Sleeve
WA50-200CEX025-AL	2" x 25'	Fem Cam Alum.	Male Cam Alum.	Crimp Sleeve
WA50-200CEX050-AL	2" x 50'	Fem Cam Alum.	Male Cam Alum.	Crimp Sleeve
WA50-300CEX020-AL	3" x 20'	Fem Cam Alum.	Male Cam Alum.	Crimp Sleeve
WA50-300CEX025-AL	3" x 25'	Fem Cam Alum.	Male Cam Alum.	Crimp Sleeve
WA50-300CEX050-AL	3" x 50'	Fem Cam Alum.	Male Cam Alum.	Crimp Sleeve
WA50-400CEX020-AL	4" x 20'	Fem Cam Alum.	Male Cam Alum.	Crimp Sleeve
WA50-400CEX025-AL	4" x 25'	Fem Cam Alum.	Male Cam Alum.	Crimp Sleeve
WA50-400CEX050-AL	4" x 50'	Fem Cam Alum.	Male Cam Alum.	Crimp Sleeve

*Specify (N)=Type 1 for NECO Style or (P)=Type 2 for PT Style.



Fixed x Floating

Part No.	Hose Size & Length	End 1	End 2	Attaching Method
WA50-300FLX025-CS-1	3" X 25'	150# Fixed Flange	150# Floating Flange	Crimp Sleeve
WA50-300FLX050-CS-1	3" X 50'	150# Fixed Flange	150# Floating Flange	Crimp Sleeve
WA50-400FLX010-CS-1	4" x 10'	150# Fixed Flange	150# Floating Flange	Crimp Sleeve
WA50-400FLX020-CS-1	4" x 20'	150# Fixed Flange	150# Floating Flange	Crimp Sleeve
WA50-600FLX010-CS-1	6" x 10'	150# Fixed Flange	150# Floating Flange	Crimp Sleeve
WA50-600FLX020-CS-1	6" x 20'	150# Fixed Flange	150# Floating Flange	Crimp Sleeve

WA32 - HD HIGH-TEMPERATURE GLYCOL HOSE



Application:

Specially engineered to transfer glycol/water solutions (50/50) used in hydronic heater and ground thawing operations in harsh environments where higher temperatures of fluid transfer is required.

Construction:

Tube - Black, specially formulated, high-temperature EPDM

Reinforcement - Multiple plies of high-strength synthetic yarn

Cover - Weather, ozone, heat, and high-abrasion resistant EPDM

Temperature Range:

-37°C to +121°C (149°C Intermittent)

-35°F to +250°F (300°F Intermittent)

Part No.	I.D. Inches	O.D. Inches	Max W.P. PSI	Weight lbs / ft	Standard Lengths
WA32-075	3/4	1.11	200	0.35	25'/50'/500'
WA32-100	1	1.39	200	0.52	25'/50'/450'
WA32-200	2	2.59	200	1.45	25'/50'

*Longer lengths available upon request.

AIR HOSE



Application:

Air, water, agricultural spray solutions, and other diluted chemicals. Good resistance to heat, abrasion, and weathering.

Construction:

Tube - Black, limited oil resistant synthetic rubber

Reinforcement - Synthetic yarn

Cover - Smooth red, abrasion, weather and ozone resistant rubber

Branding - FLEXTRAL AR10-100 1" (25.4mm) GENERAL PURPOSE AIR/WATER 200 PSI MAX WP

Temperature Range:

-29°C to +80°C (-20°F to +180°F)



Part No.	Hose Size & Length	End 1	End 2	Attaching Method
AR10-025MMXF025-BR	1/4" x 25'	Z1/2" NPT	Z1/2" NPT	Crimp
AR10-025MMXF050-BR	1/4" x 50'	Z1/2" NPT	Z1/2" NPT	Crimp
AR10-038M2525MXF025-BR	3/8" x 25'	Z1/2" NPT	Z1/2" NPT	Crimp
AR10-038M2525MXF050-BR	3/8" x 50'	Z1/2" NPT	Z1/2" NPT	Crimp
AR10-038M2525MXF100-BR	3/8" x 100'	Z1/2" NPT	Z1/2" NPT	Crimp
AR10-038MMXF050-BR	3/8" x 50'	C1/2" NPT	C1/2" NPT	Crimp
AR10-038MMXF100-BR	3/8" x 100'	C1/2" NPT	C1/2" NPT	Crimp
AR10-050MMXF050-BR	1/2" x 50'	Z1/2" NPT	Z1/2" NPT	Crimp

*Call for additional fittings and lengths.

AR11 - WATER/AIR DISCHARGE HOSE ASSEMBLIES



Application:

Air, water, agricultural spray solutions, and other diluted chemicals. Good resistance to heat, abrasion, and weathering.

Construction:

Tube - Black, limited oil resistant synthetic rubber

Reinforcement - Synthetic yarn

Cover - Smooth black, abrasion and weather resistant rubber

Branding - FLEXTRAL AR11-050 1/2" (12.7mm) GENERAL PURPOSE AIR/WATER 200 PSI MAX WP

Temperature Range:

-29°C to +80°C (-20°F to +180°F)



Part No.	Hose Size & Length	End 1	End 2	Attaching Method
AR11-025MMXF025-BR	1/4" x 25'	Z1/4" NPT	Z1/4" NPT	Crimp
AR11-025MMXF050-BR	1/4" x 50'	Z1/4" NPT	Z1/4" NPT	Crimp
AR11-038M2525MXF025-BR	3/8" x 25'	Z1/2" NPT	Z1/2" NPT	Crimp
AR11-038M2525MXF050-BR	3/8" x 50'	Z1/2" NPT	Z1/2" NPT	Crimp
AR11-038M2525MXF100-BR	3/8" x 100'	Z1/2" NPT	Z1/2" NPT	Crimp
AR11-038MMXF050-BR	3/8" x 50'	C1/2" NPT	C1/2" NPT	Crimp
AR11-038MMXF100-BR	3/8" x 100'	C1/2" NPT	C1/2" NPT	Crimp
AR11-050MMXF050-BR	1/2" x 50'	Z1/2" NPT	Z1/2" NPT	Crimp

*Call for additional fittings and lengths.



Part No.	Hose Size & Length	End 1	End 2	Attaching Method
AR11-063GHTXF025-BR	5/8" x 25'	M-GHT	F-GHT	Crimp
AR11-063GHTXF050-BR	5/8" x 50'	M-GHT	F-GHT	Crimp
AR11-063GHTXF075-BR	5/8" x 75'	M-GHT	F-GHT	Crimp
AR11-063GHTXF100-BR	5/8" x 100'	M-GHT	F-GHT	Crimp
AR11-075GHTXF025-BR	3/4" x 25'	M-GHT	F-GHT	Crimp
AR11-075GHTXF050-BR	3/4" x 50'	M-GHT	F-GHT	Crimp
AR11-075GHTXF075-BR	3/4" x 75'	M-GHT	F-GHT	Crimp
AR11-075GHTXF100-BR	3/4" x 100'	M-GHT	F-GHT	Crimp

FUEL HOSE ASSEMBLIES



Part No.	1-Wire Fuel Hose Assemblies
GX12-12MP-12MP-25'	3/4" x 25' 1-Wire Fuel Hose - 3/4" Male NPT Each End 1,525 PSI
GX12-12MP-12MP-50'	3/4" x 50' 1-Wire Fuel Hose - 3/4" Male NPT Each End 1,525 PSI
GX16-16MP-16MP-25'	1" x 25' 1-Wire Fuel Hose - 1" Male NPT Each End 1,275 PSI
GX-16-16MP-16MP-50'	1" x 50' 1-Wire Fuel Hose - 1" Male NPT Each End 1,275 PSI

Part No.	2-Wire Fuel Hose Assemblies
AXT12-12MP-12MP-25'	3/4" x 25' 2-Wire Fuel Hose - 3/4" Male NPT Each End 3,000 PSI
AXT12-12MP-12MP-50'	3/4" x 50' 2-Wire Fuel Hose - 3/4" Male NPT Each End 3,000 PSI
AXT16-16MP-16MP-25'	1" x 25' 2-Wire Fuel Hose - 1" Male NPT Each End 3,000 PSI
AXT16-16MP-16MP-50'	1" x 50' 2-Wire Fuel Hose - 1" Male NPT Each End 3,000 PSI

*Call for additional fittings and lengths.

QA SERIES - ISO A



COUPLER - FEMALE NPT		
BODY	STEEL	THREAD
1/4"	QAC44FP	1/4" NPTF
3/8"	QAC66FP	3/8" NPTF
1/2"	QAC88FP	1/2" NPTF
3/4"	QAC1212FP	3/4" NPTF
1"	QAC1616FP	1" NPTF
1-1/4"	QAC2020FP	1-1/4" NPTF
1-1/2"	QAC2424FP	1-1/2" NPTF
2"	QAC3232FP	2" NPTF

NIPPLE - FEMALE NPT		
BODY	STEEL	THREAD
1/4"	QAN44FP	1/4" NPTF
3/8"	QAN66FP	3/8" NPTF
1/2"	QAN88FP	1/2" NPTF
3/4"	QAN1212FP	3/4" NPTF
1"	QAN1616FP	1" NPTF
1-1/4"	QAN2020FP	1-1/4" NPTF
1-1/2"	QAN2424FP	1-1/2" NPTF
2"	QAN3232FP	2" NPTF

FUEL HOSE ASSEMBLIES (W/ ISO-A QD's)



Part No.	1-Wire Fuel Hose Assemblies
GX08-08MP-08MP-025-ISO A	1/2" x 25' 1-Wire Fuel Hose - 1/2" Male NPT Each End 2,320 PSI
GX08-08MP-08MP-050-ISO A	1/2" x 50' 1-Wire Fuel Hose - 1/2" Male NPT Each End 2,320 PSI
GX12-12MP-12MP-025-ISO A	3/4" x 25' 1-Wire Fuel Hose - 3/4" Male NPT Each End 1,525 PSI
GX12-12MP-12MP-050-ISO A	3/4" x 50' 1-Wire Fuel Hose - 3/4" Male NPT Each End 1,525 PSI
GX16-16MP-16MP-025-ISO A	1" x 25' 1-Wire Fuel Hose - 1" Male NPT Each End 1,275 PSI
GX16-16MP-16MP-050-ISO A	1" x 50' 1-Wire Fuel Hose - 1" Male NPT Each End 1,275 PSI
GX24-24MP-24MP-025-ISO A	1 1/2" x 25' 1-Wire Fuel Hose - 1 1/2" Male NPT Each End 725 PSI
GX24-24MP-24MP-050-ISO A	1 1/2" x 50' 1-Wire Fuel Hose - 1 1/2" Male NPT Each End 725 PSI

*Call for additional fittings and lengths.

CAMLOCK x FLANGE ADAPTERS

MALE CAMLOCK x 150# FLANGE ADAPTER



Part No.	Description
AL-AFL300	3" Male Camlock x 150# Flange - Aluminum
AL-AFL400	4" Male Camlock x 150# Flange - Aluminum
AL-AFL600	6" Male Camlock x 150# Flange - Aluminum

*6" not recommended for Chiller Application.

FEMALE CAMLOCK x 150# FLANGE ADAPTERS



Two Arm Style

Part No.	Description
AL-DFL300	3" Female Camlock x 150# Flange - Aluminum
AL-DFL400	4" Female Camlock x 150# Flange - Aluminum
AL-DFL600	6" Female Camlock x 150# Flange - Aluminum

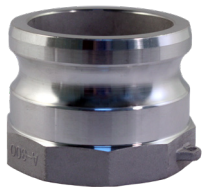
*6" not recommended for Chiller Application.



Four Arm Style

Part No.	Description
AL-DFL400-4	4" Female Camlock x 150# Flange - Aluminum
AL-DFL600-4	6" Female Camlock x 150# Flange - Aluminum

CAMLOCK FITTINGS



Aluminum Part A

Part No.	Size
AL-A050	1/2"
AL-A075	3/4"
AL-A100	1"
AL-A125	1 1/4"
AL-A150	1 1/2"
AL-A200	2"
AL-A250	2 1/2"
AL-A300	3"
AL-A400	4"
AL-A500	5"
AL-A600	6"
AL-A800*	8"



Aluminum Part B

Part No.	Size
AL-B050	1/2"
AL-B075	3/4"
AL-B100	1"
AL-B125	1 1/4"
AL-B150	1 1/2"
AL-B200	2"
AL-B250	2 1/2"
AL-B300	3"
AL-B400	4"
AL-B500	5"
AL-B600	6"
AL-B800*	8"



Aluminum Part C

Part No.	Size
AL-C050	1/2"
AL-C075	3/4"
AL-C100	1"
AL-C125	1 1/4"
AL-C150	1 1/2"
AL-C200	2"
AL-C250	2 1/2"
AL-C300	3"
AL-C400	4"
AL-C500	5"
AL-C600	6"
AL-C800*	8"



Aluminum Part D

Part No.	Size
AL-D050	1/2"
AL-D075	3/4"
AL-D100	1"
AL-D125	1 1/4"
AL-D150	1 1/2"
AL-D200	2"
AL-D250	2 1/2"
AL-D300	3"
AL-D400	4"
AL-D500	5"
AL-D600	6"
AL-D800*	8"



Aluminum Part E

Part No.	Size
AL-E050	1/2"
AL-E075	3/4"
AL-E100	1"
AL-E125	1 1/4"
AL-E150	1 1/2"
AL-E200	2"
AL-E250	2 1/2"
AL-E300	3"
AL-E400	4"
AL-E500	5"
AL-E600	6"
AL-E800*	8"



Aluminum Part F

Part No.	Size
AL-F050	1/2"
AL-F075	3/4"
AL-F100	1"
AL-F125	1 1/4"
AL-F150	1 1/2"
AL-F200	2"
AL-F250	2 1/2"
AL-F300	3"
AL-F400	4"
AL-F500	5"
AL-F600	6"
AL-F800*	8"



Aluminum Part DP

Part No.	Size
AL-DP050	1/2"
AL-DP075	3/4"
AL-DP100	1"
AL-DP125	1 1/4"
AL-DP150	1 1/2"
AL-DP200	2"
AL-DP250	2 1/2"
AL-DP300	3"
AL-DP400	4"
AL-DP500	5"
AL-DP600	6"



Aluminum Part DC

Part No.	Size
AL-DC050	1/2"
AL-DC075	3/4"
AL-DC100	1"
AL-DC125	1 1/4"
AL-DC150	1 1/2"
AL-DC200	2"
AL-DC250	2 1/2"
AL-DC300	3"
AL-DC400	4"
AL-DC500	5"
AL-DC600	6"



Part No.	Size	Thread	GPM @ 100PSI	Color
FNA-075	3/4"	GHT	8	Green
FNB-100	1"	NPSH (SIPT)	22	Red
FNB-150	1 1/2"	NPSH (SIPT)	75	Red
FNB-200	2"	NPSH (SIPT)	150	Red
FNC-150	1 1/2"	NH (NST)	75	Red

*Threads: GHT, NPSH(SIPT) NH(NST)

* 6" - 8" camlocks are not suitable for HVAC chiller systems.

* Also available in Brass and Stainless Steel.

PIPE FITTINGS - BLACK IRON SCH 40



Part No.	Pipe Size	Length
PNIPBK40-012XCLS	1/8"	Close
PNIPBK40-012X150	1/8"	1 1/2"
PNIPBK40-012X200	1/8"	2"
PNIPBK40-012X250	1/8"	2 1/2"
PNIPBK40-012X300	1/8"	3"
PNIPBK40-012X350	1/8"	3 1/2"
PNIPBK40-012X400	1/8"	4"
PNIPBK40-012X450	1/8"	4 1/2"
PNIPBK40-012X500	1/8"	5"
PNIPBK40-012X550	1/8"	5 1/2"
PNIPBK40-012X600	1/8"	6"
PNIPBK40-025XCLS	1/4"	Close
PNIPBK40-025X150	1/4"	1 1/2"
PNIPBK40-025X200	1/4"	2"
PNIPBK40-025X250	1/4"	2 1/2"
PNIPBK40-025X300	1/4"	3"
PNIPBK40-025X350	1/4"	3 1/2"
PNIPBK40-025X400	1/4"	4"
PNIPBK40-025X450	1/4"	4 1/2"
PNIPBK40-025X500	1/4"	5"
PNIPBK40-025X550	1/4"	5 1/2"
PNIPBK40-025X600	1/4"	6"
PNIPBK40-038XCLS	3/8"	Close
PNIPBK40-038X150	3/8"	1 1/2"
PNIPBK40-038X200	3/8"	2"
PNIPBK40-038X250	3/8"	2 1/2"
PNIPBK40-038X300	3/8"	3"
PNIPBK40-038X350	3/8"	3 1/2"
PNIPBK40-038X400	3/8"	4"
PNIPBK40-038X450	3/8"	4 1/2"
PNIPBK40-038X500	3/8"	5"
PNIPBK40-038X550	3/8"	5 1/2"
PNIPBK40-038X600	3/8"	6"

Part No.	Pipe Size	Length
PNIPBK40-050XCLS	1/2"	Close
PNIPBK40-050X150	1/2"	1 1/2"
PNIPBK40-050X200	1/2"	2"
PNIPBK40-050X250	1/2"	2 1/2"
PNIPBK40-050X300	1/2"	3"
PNIPBK40-050X350	1/2"	3 1/2"
PNIPBK40-050X400	1/2"	4"
PNIPBK40-050X450	1/2"	4 1/2"
PNIPBK40-050X500	1/2"	5"
PNIPBK40-050X550	1/2"	5 1/2"
PNIPBK40-050X600	1/2"	6"
PNIPBK40-075XCLS	3/4"	Close
PNIPBK40-075X150	3/4"	1 1/2"
PNIPBK40-075X200	3/4"	2"
PNIPBK40-075X250	3/4"	2 1/2"
PNIPBK40-075X300	3/4"	3"
PNIPBK40-075X350	3/4"	3 1/2"
PNIPBK40-075X400	3/4"	4"
PNIPBK40-075X450	3/4"	4 1/2"
PNIPBK40-075X500	3/4"	5"
PNIPBK40-075X550	3/4"	5 1/2"
PNIPBK40-075X600	3/4"	6"
PNIPBK40-100XCLS	1"	Close
PNIPBK40-100X200	1"	2"
PNIPBK40-100X250	1"	2 1/2"
PNIPBK40-100X300	1"	3"
PNIPBK40-100X350	1"	3 1/2"
PNIPBK40-100X400	1"	4"
PNIPBK40-100X450	1"	4 1/2"
PNIPBK40-100X500	1"	5"
PNIPBK40-100X550	1"	5 1/2"
PNIPBK40-100X600	1"	6"

*Call for other fitting materials.

PIPE FITTINGS - BLACK IRON SCH 40



Part No.	Pipe Size	Length
PNIPBK40-125XCLS	1¼"	Close
PNIPBK40-125X200	1¼"	2"
PNIPBK40-125X250	1¼"	2½"
PNIPBK40-125X300	1¼"	3"
PNIPBK40-125X350	1¼"	3½"
PNIPBK40-125X400	1¼"	4"
PNIPBK40-125X450	1¼"	4½"
PNIPBK40-125X500	1¼"	5"
PNIPBK40-125X550	1¼"	5½"
PNIPBK40-125X600	1¼"	6"
PNIPBK40-150XCLS	1½"	Close
PNIPBK40-150X200	1½"	2"
PNIPBK40-150X250	1½"	2½"
PNIPBK40-150X300	1½"	3"
PNIPBK40-150X350	1½"	3½"
PNIPBK40-150X400	1½"	4"
PNIPBK40-150X450	1½"	4½"
PNIPBK40-150X500	1½"	5"
PNIPBK40-150X550	1½"	5½"
PNIPBK40-150X600	1½"	6"
PNIPBK40-200XCLS	2"	Close
PNIPBK40-200X250	2"	2½"
PNIPBK40-200X300	2"	3"
PNIPBK40-200X350	2"	3½"
PNIPBK40-200X400	2"	4"
PNIPBK40-200X450	2"	4½"
PNIPBK40-200X500	2"	5"
PNIPBK40-200X550	2"	5½"
PNIPBK40-200X550	2"	6"

Part No.	Pipe Size	Length
PNIPBK40-250XCLS	2½"	Close
PNIPBK40-250X300	2½"	3"
PNIPBK40-250X350	2½"	3Z/x"
PNIPBK40-250X400	2½"	4"
PNIPBK40-250X450	2½"	4Z/x"
PNIPBK40-250X500	2½"	5"
PNIPBK40-250X550	2½"	5Z/x"
PNIPBK40-250X600	2½"	6"
PNIPBK40-300XCLS	3"	Close
PNIPBK40-300X300	3"	3"
PNIPBK40-300X350	3"	3½"
PNIPBK40-300X400	3"	4"
PNIPBK40-300X450	3"	4½"
PNIPBK40-300X500	3"	5"
PNIPBK40-300X550	3"	5½"
PNIPBK40-300X600	3"	6"
PNIPBK40-400XCLS	4"	Close
PNIPBK40-400X400	4"	4"
PNIPBK40-400X450	4"	4½"
PNIPBK40-400X500	4"	5"
PNIPBK40-400X550	4"	5½"
PNIPBK40-400X600	4"	6"
PNIPBK40-600XCLS	6"	Close
PNIPBK40-600X600	6"	6"
PNIPBK40-600X800	6"	8"
PNIPBK40-600X1200	6"	12"

*Call for other fitting materials.

PIPE FITTINGS - BLACK IRON SCH 40



Reducing Bushing

Part No.	Size	
	Male	Female
PBUSHBK40-025X012	1/4"	1/8"
PBUSHBK40-038X012	3/8"	1/8"
PBUSHBK40-038X025	3/8"	1/4"
PBUSHBK40-050X025	1/2"	1/4"
PBUSHBK40-050X038	1/2"	3/8"
PBUSHBK40-075X025	3/4"	1/4"
PBUSHBK40-075X038	3/4"	3/8"
PBUSHBK40-075X050	3/4"	1/2"
PBUSHBK40-100X025	1"	1/4"
PBUSHBK40-100X038	1"	3/8"
PBUSHBK40-100X050	1"	1/2"
PBUSHBK40-100X075	1"	3/4"
PBUSHBK40-125X050	1 1/4"	1/2"
PBUSHBK40-125X075	1 1/4"	3/4"
PBUSHBK40-125X100	1 1/4"	1"
PBUSHBK40-150X125	1 1/4"	1 1/4"
PBUSHBK40-150X100	1 1/2"	1"
PBUSHBK40-150X125	1 1/2"	1 1/4"
PBUSHBK40-200X075	2"	3/4"
PBUSHBK40-200X100	2"	1"
PBUSHBK40-200X125	2"	1 1/4"
PBUSHBK40-200X150	2"	1 1/2"
PBUSHBK40-250X100	2 1/2"	1"
PBUSHBK40-250X125	2 1/2"	1 1/4"
PBUSHBK40-250X150	2 1/2"	1 1/2"
PBUSHBK40-250X200	2 1/2"	2"
PBUSHBK40-300X200	3"	2"
PBUSHBK40-300X250	3"	2 1/2"
PBUSHBK40-400X300	4"	3"

*Call for other fitting materials.

Reducing Coupling

Part No.	Size	
	Female	Female
PBELLBK40-025X012	1/4"	1/8"
PBELLBK40-038X012	3/8"	1/8"
PBELLBK40-038X025	3/8"	1/4"
BBELLBK40-050-025	1/2"	1/4"
PBELLBK40-050X038	1/2"	3/8"
PBELLBK40-075X025	3/4"	1/4"
PBELLBK40-075X038	3/4"	3/8"
PBELLBK40-075X050	3/4"	1/2"
PBELLBK40-100X025	1"	1/4"
PBELLBK40-100X038	1"	3/8"
PBELLBK40-100X050	1"	1/2"
PBELLBK40-100X075	1"	3/4"
PBELLBK40-125X038	1 1/4"	3/8"
PBELLBK40-125X050	1 1/4"	1/2"
PBELLBK40-125X075	1 1/4"	3/4"
PBELLBK40-125X100	1 1/4"	1"
PBELLBK40-150X075	1 1/2"	3/4"
PBELLBK40-150X100	1 1/2"	1"
PBELLBK40-150X125	1 1/2"	1 1/4"
PBELLBK40-200X075	2"	3/4"
PBELLBK40-200X100	2"	1"
PBELLBK40-200X125	2"	1 1/4"
PBELLBK40-200X150	2"	1 1/2"
PBELLBK40-250X100	2 1/2"	1"
PBELLBK40-250X125	2 1/2"	1 1/4"
PBELLBK40-250X150	2 1/2"	1 1/2"
PBELLBK40-250X200	2 1/2"	2"
PBELLBK40-300X200	3"	2"
PBELLBK40-300X250	3"	2 1/2"
PBELLBK40-400X300	4"	3"

*Call for other fitting materials.

PIPE FITTINGS - BLACK IRON SCH 40

Female 90° Elbow

Part No.	Size
PEL90BK40-012	1/8"
PEL90BK40-025	1/4"
PEL90BK40-038	3/8"
PEL90BK40-050	1/2"
PEL90BK40-075	3/4"
PEL90BK40-100	1"
PEL90BK40-125	1 1/4"
PEL90BK40-150	1 1/2"
PEL90BK40-200	2"
PEL90BK40-250	2 1/2"
PEL90BK40-300	3"
PEL90BK40-400	4"



*Call for other fitting materials.

Female 45° Elbow

Part No.	Size
PEL45BK40-012	1/8"
PEL45BK40-025	1/4"
PEL45BK40-038	3/8"
PEL45BK40-050	1/2"
PEL45BK40-075	3/4"
PEL45BK40-100	1"
PEL45BK40-125	1 1/4"
PEL45BK40-150	1 1/2"
PEL45BK40-200	2"
PEL45BK40-250	2 1/2"
PEL45BK40-300	3"
PEL45BK40-400	4"



*Call for other fitting materials.

Female Tee

Part No.	Size
PTEEBK40-012	1/8"
PTEEBK40-025	1/4"
PTEEBK40-038	3/8"
PTEEBK40-050	1/2"
PTEEBK40-075	3/4"
PTEEBK40-100	1"
PTEEBK40-125	1 1/4"
PTEEBK40-150	1 1/2"
PTEEBK40-200	2"
PTEEBK40-250	2 1/2"
PTEEBK40-300	3"
PTEEBK40-400	4"



*Call for other fitting materials.

Female Cross

Part No.	Size
PCROSBK40-025	1/4"
PCROSBK40-038	3/8"
PCROSBK40-050	1/2"
PCROSBK40-075	3/4"
PCROSBK40-100	1"
PCROSBK40-125	1 1/4"
PCROSBK40-150	1 1/2"
PCROSBK40-200	2"
PCROSBK40-250	2 1/2"
PCROSBK40-300	3"
PCROSBK40-400	4"



*Call for other fitting materials.

PIPE FITTINGS - BLACK IRON SCH 40

Female Caps

Part No.	Size
PCAPBK40-012	1/8"
PCAPBK40-025	1/4"
PCAPBK40-038	3/8"
PCAPBK40-050	1/2"
PCAPBK40-075	3/4"
PCAPBK40-100	1"
PCAPBK40-125	1 1/4"
PCAPBK40-150	1 1/2"
PCAPBK40-200	2"
PCAPBK40-250	2 1/2"
PCAPBK40-300	3"
PCAPBK40-400	4"



*Call for other fitting materials.

Male Plugs

Part No.	Size
PPLGSQSBK40-012	1/8"
PPLGSQSBK40-025	1/4"
PPLGSQSBK40-038	3/8"
PPLGSQSBK40-050	1/2"
PPLGSQSBK40-075	3/4"
PPLGSQSBK40-100	1"
PPLGSQSBK40-125	1 1/4"
PPLGSQSBK40-150	1 1/2"
PPLGSQSBK40-200	2"
PPLGSQSBK40-250	2 1/2"
PPLGSQSBK40-300	3"
PPLGSQSBK40-400	4"



*Call for other fitting materials.

Straight Couplings

Part No.	Size
PCOUPBK40-025	1/4"
PCOUPBK40-038	3/8"
PCOUPBK40-050	1/2"
PCOUPBK40-075	3/4"
PCOUPBK40-100	1"
PCOUPBK40-125	1 1/4"
PCOUPBK40-150	1 1/2"
PCOUPBK40-200	2"
PCOUPBK40-250	2 1/2"
PCOUPBK40-300	3"
PCOUPBK40-400	4"
PCOUPBK40-600	6"



*Call for other fitting materials.

Plated Steel 150 ASA Threaded Flange

Part No.	Size
FLT150-150-PS	1 1/2"
FLT150-200-PS	2"
FLT150-250-PS	2 1/2"
FLT150-300-PS	3"
FLT150-400-PS	4"
FLT150-600-PS	6"
FLT150-800-PS	8"
FLT150-1000-PS	10"
FLT150-1200-PS	12"



Also Available in Stainless Steel. All alloys are also available in 300 ASA

GROOVED FITTINGS

Adapters Are UL/FM Approved



**Victaulic QUICKVIC™
Style Rigid Couplings**

Part No.	Size
GQC-300	3"
GQC-400	4"
GQC-600	6"



**Flexible Lightweight
Grooved Coupling**

Part No.	Size
GFC-150LW	1½"
GFC-200LW	2"
GFC-300LW	3"
GFC-400LW	4"
GFC-600LW	6"
GFC-800LW	8"



**Standard Grooved
Rigid Coupling**

Part No.	Size
GRC-200	2"
GRC-250	2½"
GRC-300	3"
GRC-400	4"
GRC-500	5"
GRC-600	6"
GRC-800	8"
GRC-1000	10"
GRC-1200	12"



**High-Pressure Grooved
Rigid Coupling**

Part No.	Size
GHPC-300	3"
GHPC-400	4"
GHPC-600	6"



Grooved 45° Degree

Part No.	Size
G45-200	2"
G45-300	3"
G45-400	4"
G45-600	6"
G45-800	8"
G45-1000	10"
G45-1200	12"



**Grooved Hinged
Flange Adapter**

Part No.	Size
GHFA-200	2"
GHFA-300	3"
GHFA-400	4"
GHFA-600	6"
GHFA-800	8"
GHFA-1000	10"
GHFA-1200	12"



Grooved WYE

Part No.	Size
GY-200	2"
GY-300	3"
GY-400	4"
GY-600	6"
GY-800	8"
GY-1000	10"
GY-1200	12"



Grooved 90° Degree

Part No.	Size
G90-200	2"
G90-300	3"
G90-400	4"
G90-600	6"
G90-800	8"
G90-1000	10"
G90-1200	12"

GROOVED FITTINGS

Adapters Are UL/FM Approved



Grooved Tee

Part No.	Size
GT-200	2"
GT-300	3"
GT-400	4"
GT-600	6"
GT-800	8"
GT-1000	10"
GT-1200	12"



Grooved Concentric Reducer Threaded

Part No.	Size
GCR-3020T	3" x 2"
GCR-4020T	4" x 2"
GCR-4030T	4" x 3"
GCR-6020T	6" x 2"
GCR-6030T	6" x 3"
GCR-6040T	6" x 4"



Grooved Cap

Part No.	Size
GC-300	3"
GC-400	4"
GC-600	6"



Grooved Flange Adapter

Part No.	Size
GFA-200	2"
GFA-300	3"
GFA-400	4"
GFA-600	6"
GFA-800	8"
GFA-1000	10"
GFA-1200	12"



Grooved Drain Cap

Part No.	Size
GDC-300	3"
GDC-400	4"
GDC-600	6"



Grooved Concentric Reducer

Part No.	Size
GCR-3020	3" x 2"
GCR-4020	4" x 2"
GCR-4030	4" x 3"
GCR-6020	6" x 2"
GCR-6030	6" x 3"
GCR-6040	6" x 4"
GCR-6050	6" x 5"
GCR-6060	6" x 6"
GCR-10060	10" x 6"
GCR-10080	10" x 8"



Grooved x MP

Part No.	Size
GMP-200	2"
GMP-300	3"
GMP-400	4"
GMP-600	6"
GMP-800	8"



Grooved Butterfly Valve

Part No.	Size
GBVL-200	2"
GBVL-300	3"
GBVL-400	4"
GBVL-600	6"
GBVL-800	8"
GBVL-1000	10"
GBVL-1200	12"

 **BRIDGESTONE**

HOSE POWER[®]

CORPORATE OFFICE

50 Industrial Loop Dr N
Orange Park, FL 32073
(904) 264-1267

WWW.BRIDGESTONEHOSEPOWER.COM