



VAMS24-27(A) — Submittal/Technical Data

06/30/22

27 lb-in. — Spring Return — Modulating — Auxiliary Switch Option

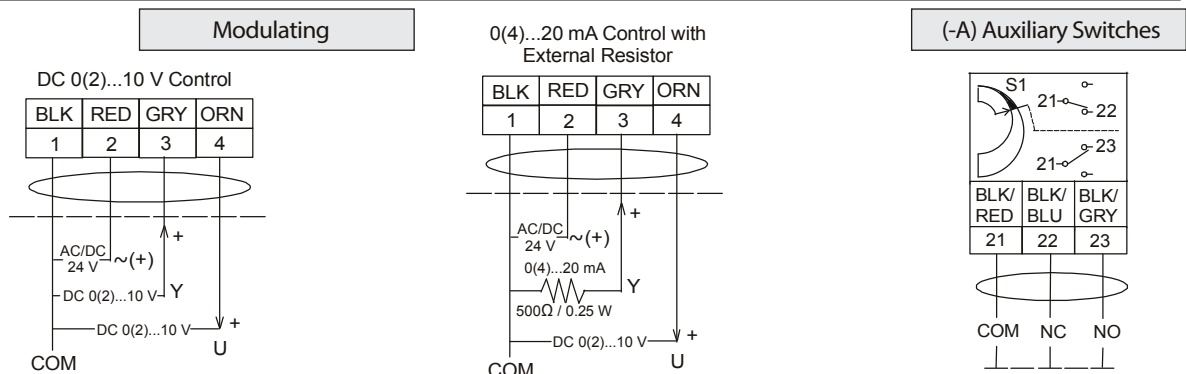
Specifications:

| | |
|--------------------------|--|
| Power Supply | AC 24 V (AC 19.2 V to 28.8 V) at 50/60 Hz: Class 2 or (SELV) (Europe), 5.1 VA Running, 2.8 VA Holding Position DC 24 V (DC 19.2 V to 28.8 V): Class 2 or SELV, 1.9 W, Running, 1.1 W Holding Position Minimum Transformer Size: 6 VA per Actuator |
| Control Input Impedance | 100k Ohms |
| Input Signal/Adjustments | Factory Set at DC 0 to 10 V, CW Rotation with Signal Increase Selectable DC 0 (2) to 10 V or 0 (4) to 20 mA with Field-Furnished 500 ohm 0.25 W Min. Resistor. Switch Selectable Direct or Reverse Action with Signal Increase |
| Feedback Signal | DC 0 (2) to 10 V for Desired Rotation Range up to 95°. Corresponds to Rotation Limits, 0.5 mA at 10 V Maximum |
| Auxiliary Switch Rating | (-A) Models) One SPDT, Double Insulated Switch with Silver Contacts – AC 24V, 50 VA Pilot Duty |
| Spring Return | Direction is Selectable with Mounting Position of Actuator: Actuator Side A is away from damper or valve: CCW Spring Return Actuator Side B is away from damper or valve: CW Spring Return |
| Equipment Rating | Class 2 or Safety Extra-Low Voltage (SELV) |
| Rotation Range | Maximum Full Stroke: 95° Adjustable Stop: 35 to 95° Maximum Position |
| Electric Stall Detection | Protects from overload at all angles of rotation |
| Torque | 27 lb-in. (3 N·m) |
| Time: 90° of Rotation | Power On (Running) 90 Seconds Constant for 0 to 27 lb-in. (3 N·m) Load, at All Operating Conditions Power Off (Returning) 12 to 17 Seconds for 0 to 27 lb-in. (3 N·m) Load, at Room Temperature 16 Seconds Nominal at Full Rated Load 22 Seconds Maximum with 27 lb-in. (3 N·m) Load at -22°F (-30°C) |
| Enclosure | NEMA 2 (IP54) for all mounting orientations |
| Ambient Conditions | Standard Operating -22 to 140°F (-30 to 60°C); 90% RH Maximum, Noncondensing Storage -40 to 185°F (-40 to 85°C); 95% RH Maximum, Noncondensing |
| Electrical Connections | |
| Without Aux Switches | 120 in. UL 444 Type CMP Plenum Rated Cable w/ 19 AWG (0.75 mm ²) Conductors & 0.25 in. (6 mm) Ferrule Ends |
| With Aux Switches | 48 in. UL 758 Type AWM Halogen-Free Cable w/ 18 AWG (0.85 mm ²) Conductors & 0.25 in. (6 mm) Ferrule Ends |
| Conduit Connections | Integral 1/2 in. (13 mm) Threaded Conduit Connector(s) |
| Mechanical Connections | Round Shafts 1/4 in. to 1/2 in. (6 to 12 mm) Square Shafts 1/4 in. to 5/16 in. (6 to 8 mm) |
| Life Cycle | 60,000 Full Stroke Cycles with 27 lb-in. (3 N·m) Load, 1,500,000 Repositions with 27 lb-in. (3 N·m) Load |
| Noise Rating | Running <37 dBA at 27 lb-in. (3 N·m) Load, at a Distance of 39-13/32 in. (1 m) Holding <20 dBA at a Distance of 39-13/32 in. (1 m) Returning <56 dBA at 27 lb-in. (3 N·m) Load, at a Distance of 39-13/32 in. (1 m) |
| Dimensions | Actuator Only - 6-3/8" (L) x 3-15/16" (W) x 2-1/4" (H) |
| Weight | Actuator Only - 2.0 lb. (2.4 lb w/ Aux. Switches) |
| Agency Certification | UL Listed, CCN XAPX, File E27734; to UL 60730-1A: 2003-08, Ed. 3.1, Automatic Electrical Controls for Household and Similar Use; and UL 60730-2-14: Ed. 1, Part 2, Particular Requirements for Electric Actuators. |

Wiring: (Cable)

IMPORTANT:

Do not install multiple VAS-27 Series Actuators connected to the same mechanical load. Master-Slave application of VAS-27 Series Actuators requires that each actuator be connected to independent loads.



NOTE: WARNING: All VAS-27 Series actuators are designed for use only in conjunction with operating controls. Where an operating control failure would result in personal injury and/or loss of property, it is the responsibility of the installer to add safety devices or alarm systems that protect against, and/or warn of, control failure.

The performance specifications are nominal and conform to acceptable industry standards. For application at conditions beyond these specifications, consult the nearest Bray office. Bray controls shall not be liable for damages resulting from misapplication or misuse of its products.