



DC24-(44,88)-TP — Submittal/Technical Data

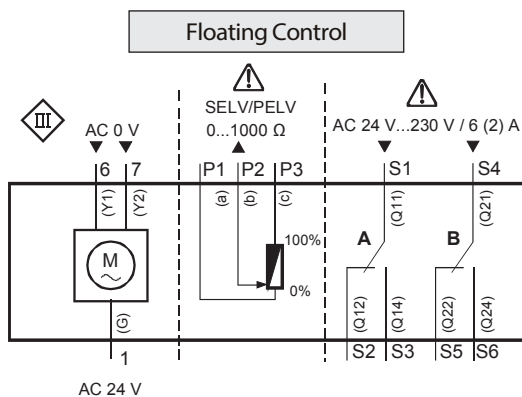
02/07/19

44,88 lb-in. — Non-Spring Return — Floating — Plenum Cable — Auxiliary Switches

Specifications:

Power Supply	DC24-44	24 VAC +20%, -15% at 50/60 Hz
	DC24-88	24 VAC +20%, -15% at 50/60 Hz
	Power Consumption Running	2 VA 1W
	Control Signal	0 to 10 VDC
Input Signal	Floating:	24 VAC at 50/60 Hz or 24 VDC
Mechanical Output	DC24-44	44 lb-in (5 Nm)
	DC24-88	88 lb-in (10 Nm)
Audible Noise Rating		35 dBA at 1 m
Rotation Range		Nominal Angle of Rotation 90°, mechanically limited to 95°
Rotation Timing	DC24-44	90 sec. at 60 Hz (108 sec.at 50Hz)
	DC24-88	125 sec. at 60 Hz (150 sec.at 50Hz)
Cycle Life		Designed for 60,000 full stroke cycles
Electrical Connection		3 ft. (0.9 m) Pre-cabled - AWG 18 - Plenum Rated Cable
Mechanical Connection		3/8 to 5/8 in. (8 to 16 mm) diameter round shaft,
		1/4 to 1/2 in. (6 to 12.8 mm) square shaft
		Minimum Shaft Length 1-5/32 (30 mm)
Enclosure		NEMA 2, IP54 according to EN60529
Manual Override		External Push Button
Ambient Conditions	Operating	-25 to 130°F (-32 to 55°C); 0 to 95% RH, non-condensing
	Storage	-40 to 158°F (-40 to 70°C); 0 to 95% RH, non-condensing
Dimensions (L x W x H)		(L) 5.4" x (W) 2.8" x (H) 2.4 (137 x 68 x 60mm)
Shipping Weight		1.06 lb (.48 kg)
Equipment Rating		Class 2 According to UL, CSA - Class III per EN60730
Agency Compliance	UL873, CSA C22.2 No. 24-93, CE	
	In accordance with the directive set forth by the European Union for Electromagnetic Compatibility (EMC) 89/336/EEC - Emissions Standards EN 50081-1 – Immunity Standards EN 50082-2	

Wiring: (Plenum Cable)



Cable			Function
No.	Code	Color	
1	G	Red (RD)	AC 24 V Supply (SP)
2	G0	Black (BK)	Neutral (SN)
6	Y1	Violet (VT)	Control Signal Clockwise AC 0 V
7	Y2	Orange (OG)	Control Signal AC 0 V Counterclockwise
8	Y	Grey (GY)	Control signal DC 0..10 V, 0..35 V
9	U	Pink (PK)	Position indication DC 0...10 V

NOTE: WARNING: All DC-44,88 Series actuators are designed for use only in conjunction with operating controls. Where an operating control failure would result in personal injury and/or loss of property, it is the responsibility of the installer to add safety devices or alarm systems that protect against, and/or warn of, control failure.

To avoid excessive wear or drive time on the motor, use a controller and/or software that provides a time-out function to remove the signal at the end of rotation (stall).

The performance specifications are nominal and conform to acceptable industry standards. For application at conditions beyond these specifications, consult the nearest Bray office. Bray controls shall not be liable for damages resulting from misapplication or misuse of its products.

Mixed switch operation is not permitted. Only the switching outputs of both auxiliary switches (A and B), only apply: UL/CSA: Class 2 voltage CE: Separated Extra-Low Voltage (SELV) or Protective Extra Low Voltage (PELV), according to HD384-4-41.