



## DC24-(44,88)-TAP — Submittal/Technical Data

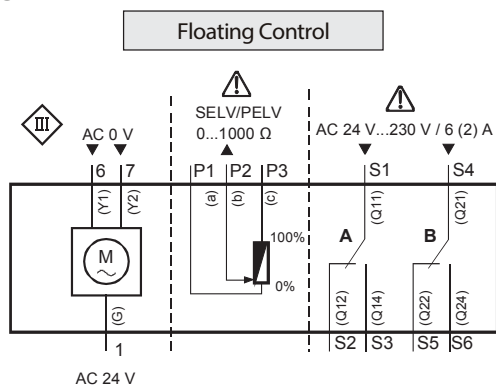
02/07/19

44,88 lb-in. — Non-Spring Return — Floating — Plenum Cable — Auxiliary Switches

### Specifications:

Power Supply	DC24-44 DC24-88	24 VAC +20%, -15% at 50/60 Hz 24 VAC +20%, -15% at 50/60 Hz
	Power Consumption Running	2 VA 1W
	Control Signal	0 to 10 VDC
Input Signal	Floating:	24 VAC at 50/60 Hz or 24 VDC
Mechanical Output	DC24-44 DC24-88	44 lb-in (5 Nm) 88 lb-in (10 Nm)
Dual Auxiliary Switch Contact Rating		4A Resistive, 2A Inductive
Switch Range	Switch A Switch B Switching Hysteresis	0 to 90° with 5° Intervals (Recommended Range Usage 0 to 45°) Factory Setting 5° 0 to 90° with 5° Intervals (Recommended Range Usage 45 to 90°) Factory Setting 85° 2°
Audible Noise Rating		35 dBA at 1 m
Rotation Range		Nominal Angle of Rotation 90°, mechanically limited to 95°
Rotation Timing	DC24-44 DC24-88	90 sec. at 60 Hz (108 sec.at 50Hz) 125 sec. at 60 Hz (150 sec.at 50Hz)
Cycle Life		Designed for 60,000 full stroke cycles
Electrical Connection		3 ft. (0.9 m) Pre-cabled - AWG 18 - Plenum Rated Cable
Mechanical Connection		3/8 to 5/8 in. (8 to 16 mm) diameter round shaft, 1/4 to 1/2 in. (6 to 12.8 mm) square shaft Minimum Shaft Length 1-5/32 (30 mm)
Enclosure		NEMA 2, IP54 according to EN60529
Manual Override		External Push Button
Ambient Conditions	Operating Storage	-25 to 130°F (-32 to 55°C); 0 to 95% RH, non-condensing -40 to 158°F (-40 to 70°C); 0 to 95% RH, non-condensing
Dimensions (L x W x H)		(L) 5.4" x (W) 2.8" x (H) 2.4 (137 x 68 x 60mm)
Shipping Weight		1.06 lb (.48 kg)
Equipment Rating		Class 2 According to UL, CSA - Class III per EN60730
Agency Compliance	UL873, CSA C22.2 No. 24-93, CE	In accordance with the directive set forth by the European Union for Electromagnetic Compatibility (EMC) 89/336/EEC - Emissions Standards EN 50081-1 – Immunity Standards EN 50082-2

### Wiring: (Plenum Cable)



Cable			Function
No.	Code	Color	
1	G	Red (RD)	AC 24 V Supply (SP)
2	G0	Black (BK)	Neutral (SN)
6	Y1	Violet (VT)	Control Signal Clockwise AC 0 V
7	Y2	Orange (OG)	Control Signal AC 0 V Counterclockwise
8	Y	Grey (GY)	Control signal DC 0..10 V, 0..35 V
9	U	Pink (PK)	Position indication DC 0..10 V
Auxiliary Switch - Factory Installed			
S1	Q11	Gray/Red (GY RD)	Switch A Input
S2	Q12	Gray/Blue (GY BU)	Switch A - N.C.
S3	Q14	Gray/Pink (GY PK)	Switch A - N.O.
S4	Q21	Black/Red (BK RD)	Switch B Input
S5	Q22	Black/Blue (BK BU)	Switch B - N.C.
S6	Q24	Black/Pink (BK PK)	Switch B - N.O.

**NOTE: WARNING:** All DC-44,88 Series actuators are designed for use only in conjunction with operating controls. Where an operating control failure would result in personal injury and/or loss of property, it is the responsibility of the installer to add safety devices or alarm systems that protect against, and/or warn of, control failure.

To avoid excessive wear or drive time on the motor, use a controller and/or software that provides a time-out function to remove the signal at the end of rotation (stall).

The performance specifications are nominal and conform to acceptable industry standards. For application at conditions beyond these specifications, consult the nearest Bray office. Bray controls shall not be liable for damages resulting from misapplication or misuse of its products.

Mixed switch operation is not permitted. To the switching outputs of both auxiliary switches (A and B), only apply: UL/CSA: Class 2 voltage CE: Separated Extra-Low Voltage (SELV) or Protective Extra Low Voltage (PELV), according to HD384-4-41.