

# TWIN-PAK

## Submittal

Style "TP"  
Slope Top Enclosures  
Copper/Aluminum &  
Steel Element Ratings

# Specification

**ENCLOSURE:**

STYLE : "TP"  
OUTLET: Slope Louvered  
Two-Piece  
LENGTHS: 3' thru 8' in 1' Increments  
MATERIAL  18 Ga. C.R.S. Std.

FINISH:  Baked Primer

**BACKPLATE:**

TYPE:  Partial Backplate  
LENGTHS: 4' and 8' Only  
MATERIAL:  20 Ga. Painted Std.

Note: Assembly includes all necessary components for complete assembly. Element is shipped in separate carton.

**ELEMENT:**

TYPE: Cu/Al (Mechanically Expanded)  
LENGTHS: 2' thru 6' in 1' Increments.  
One End Flared, Std.  
See Catalog for Working Pressures.

**ELEMENT:**

TYPE: Steel (Mechanically Expanded)  
LENGTHS: 2' thru 6' in 1' Increments.  
 NPT Threads Both Ends (standard)  
 Beveled Ends for Field Weld

**BRACKETS:**  Bracket w/Brkt Mtd B.B. Hanger

**ACCESSORIES:** All overlapping, engage between backplate and wall at top. Bottom returns to wall, holes provided for fasteners.

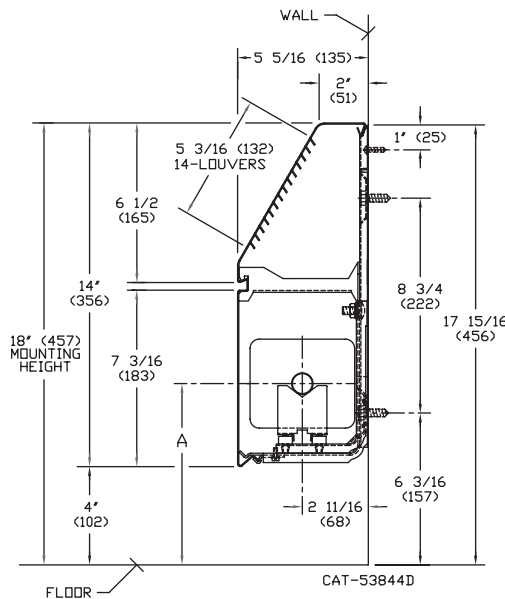
**STEEL**

ELEMENT DESIGNATION	NOMINAL PIPE SIZE	CRADLE	A MIN.	A MAX.
ST-144	1-1/4 (32)	2	7-7/8 (200)	8-15/16 (227)
ST-243	2" (50)	1	7-5/8 (194)	8-3/4 (222)

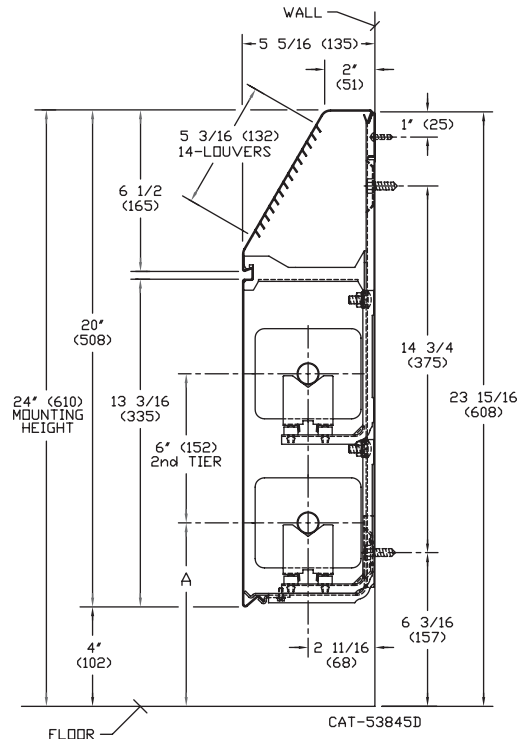
**COPPER**

ELEMENT DESIGNATION	NOMINAL PIPE SIZE	CRADLE	A MIN.	A MAX.
STC-3/4 435	3/4 (20)	2	7-3/8 (187)	8-1/2 (216)
STC-435	1" (25)	2	7-1/2 (191)	8-5/8 (219)
STC-1435	1-1/4 (32)	2	7-5/8 (194)	8-13/16 (224)

**TP-14**



**TP-20**



260 North Elm Street • Westfield, MA 01085  
Tel: (413) 562-5423 • Fax: (413) 572-3764  
www.beacon-morris.com

A MESTEK COMPANY

PROJECT: \_\_\_\_\_ DATE: \_\_\_\_\_

LOCATION: \_\_\_\_\_

ARCHITECT: \_\_\_\_\_

ENGINEER: \_\_\_\_\_

CONTRACTOR: \_\_\_\_\_

PO NUMBER: \_\_\_\_\_

# STYLE "TP"

# COPPER/ALUMINUM ELEMENT RATINGS

COVER	TUBE SIZE	CATALOG DESIGNATION	FIN SIZE	FIN PER FT.	FIN THICKNESS	ENCL DEPTH AND HEIGHT IN INCHES	TIERS AND CENTERS IN INCHES	MTG. HEIGHT IN INCHES	STEAM 215° FACTOR	HOT WATER (AVG.)					
										200°	190°	180°	170°	160°	150°
										FACTOR					
TP-14	3/4"	STC-3/4-435	4-1/4" x 3-5/8"	50	.020"	14B	1	18	1840	1580	1440	1270	1120	980	830
	1"	STC-435	4-1/4" x 3-5/8"	50	.020"	14B	1	18	1930	1660	1510	1330	1180	1020	870
	1-1/4"	STC-1435	4-1/4" x 3-5/8"	50	.020"	14B	1	18	1860	1600	1450	1280	1130	990	840
TP-20	3/4"	STC-3/4-435	4-1/4" x 3-5/8"	50	.020"	20B	1	24	2090	1800	1630	1440	1270	1110	940
	1"	STC-435	4-1/4" x 3-5/8"	50	.020"	20B	1	24	2180	1870	1700	1500	1330	1160	980
	1-1/4"	STC-1435	4-1/4" x 3-5/8"	50	.020"	20B	1	24	2130	1830	1660	1470	1300	1130	960
TP-20	3/4"	STC-3/4-435	4-1/4" x 3-5/8"	50	.020"	20B	2	24	2820	2430	2200	1950	1720	1490	1270
	1"	STC-435	4-1/4" x 3-5/8"	50	.020"	20B	2	24	2640	2270	2060	1820	1610	1400	1190
	1-1/4"	STC-1435	4-1/4" x 3-5/8"	50	.020"	20B	2	24	2510	2160	1960	1730	1530	1300	1130

# STYLE "TP"

# STEEL ELEMENT RATINGS

COVER	TUBE SIZE	CATALOG DESIGNATION	FIN SIZE	FIN PER FT.	FIN THICKNESS	ENCL DEPTH AND HEIGHT IN INCHES	TIERS AND CENTERS IN INCHES	MTG. HEIGHT IN INCHES	STEAM 215° FACTOR	HOT WATER (AVG.)					
										200°	190°	180°	170°	160°	150°
										FACTOR					
TP-14	1-1/4"	ST144	4-1/4" SQ.	40	.032" A	14B	1	18	1570	1350	1230	1080	960	830	710
	1-1/4"	ST243	4-1/4" SQ.	32	.032" A	14B	1	"	1400	1300	1080	970	850	740	630
TP-20	1-1/4"	ST144	4-1/4" SQ.	40	.032" A	20B	1	24	1670	1440	1300	1150	1020	890	750
	1-1/4"	ST243	4-1/4" SQ.	32	.032" A	20B	1	"	1450	1250	1130	1000	890	770	650
TP-20	1-1/4"	ST144	4-1/4" SQ.	40	.032" A	20B	2	"	2370	2040	1850	1640	1450	1260	1070
	1-1/4"	ST243	4-1/4" SQ.	32	.032" A	20B	2	"	2110	1820	1650	1460	1290	1120	950

### Guaranteed Working Pressures (PSI)

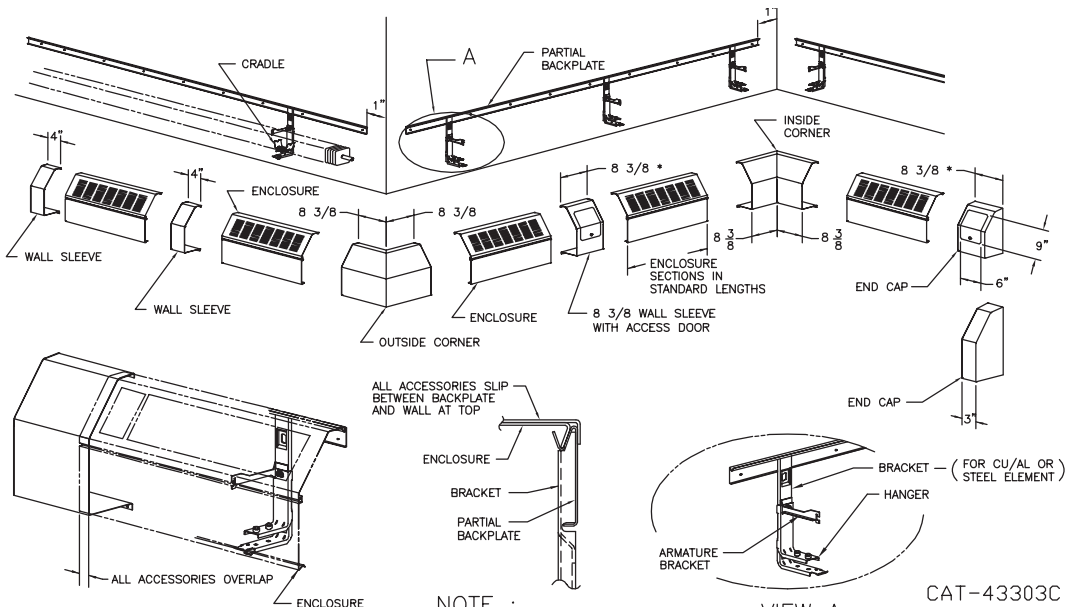
- 1 1/4" IPS: 660 @ temps. up to 650°F
- 2" IPS: 405 @ temps. up to 650°F
- 1 1/4" CU: 194 @ temps. up to 300°F
- 1" CU: 204 @ temps. up to 300°F
- 3/4" CU: 218 @ temps. up to 300°F

Maximum pressures at other temperatures are available upon request.

Hot Water Ratings shown are based on 3 feet per second velocity.

### Installation Details

- Standard length: Available from 3' to 8' in 12" increments.
- When two or more enclosures occur in a run, a 4" wall sleeve is to be used at joints.



NOTE :  
\* MAX. OVERLAP OF ACCESSORY IS 7/8" WITH ACCESS DOOR

CAT-43303C