

# Architectural Extruded Aluminum Grilles

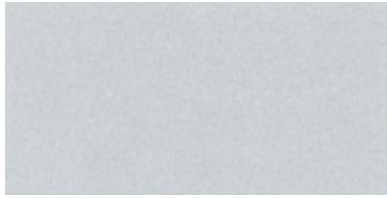


## Standard Color Chart



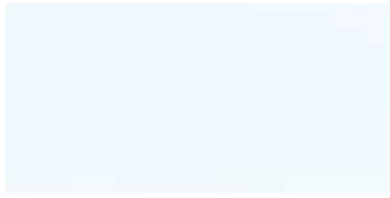
\* Stocked color.

Custom colors and finishes are available on request.



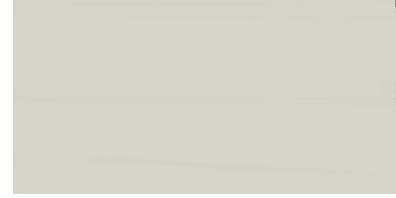
**CLEAR ANODIZED  
ALUMINUM \***

AGK01CB - CLEAR ANODIZED



**438  
WHITE \***

AGK01WB - WHITE # 438

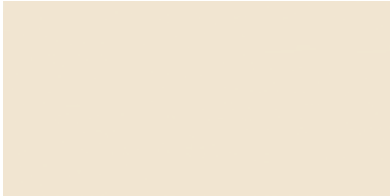


**11356  
STONEWOOD \***

AGK01TB - STONEWOOD # 11356



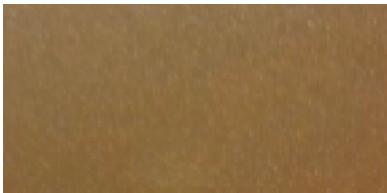
**3006  
OFF WHITE**



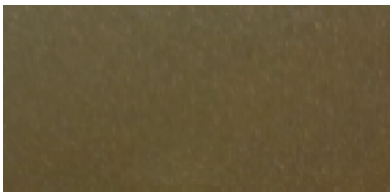
**3009  
WHITE STONE**



**2781  
DRIFTWOOD**



**3007  
LITE BRONZE**



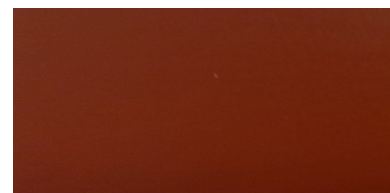
**3008  
MEDIUM BRONZE**



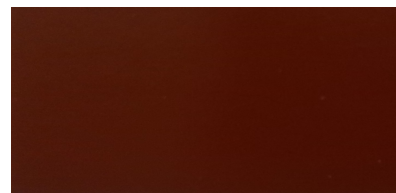
**3005  
DARK BRONZE \***  
AGK01DB - DARK BRONZE # 3006



**3012  
SLATE GRAY**



**3010  
BRICK RED 3**



**3011  
BRICK RED 1**

Goodman Company, L.P. cannot guarantee exact color tones due to variances in paint lots and lighting conditions.

The sample colors represented here are as close to the actual colors offered, within the limitations of color chip reproduction.

Please contact your Amana® brand PTAC Representative for details, lead times and quotes.

**800-647-2982**

Goodman Company, L. P. - Amana® brand PTAC Division - 1810 Wilson Parkway, Fayetteville, TN 37334

Amana® is a trademark of Maytag Corporation or its related companies and is used under license to Goodman Company, L.P., Houston, TX. USA. All rights reserved.