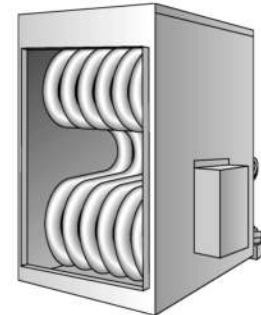
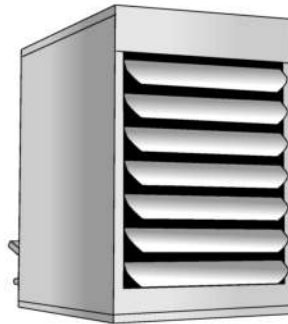


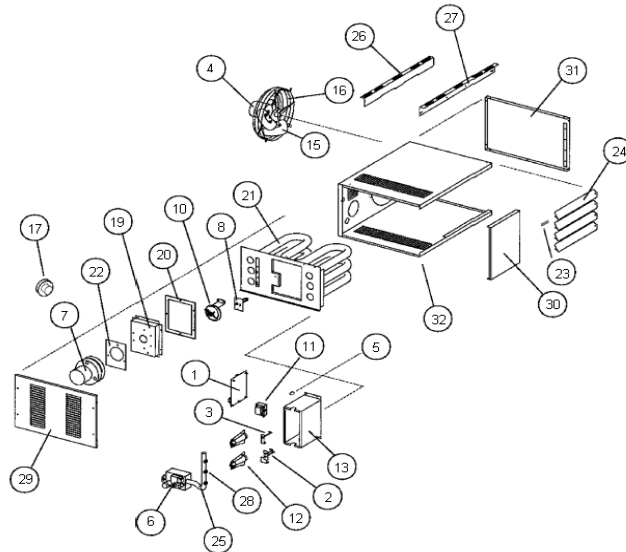
Unit Heater

Accessories & Replacement Parts



Contents	Page
CUH Unit Heater.....	2
FSA Unit Heater	4
SEP Unit Heater	
SEP 60 – 145.....	6
SEP 175 – 290.....	10
SEP 300 – 400.....	14
HED Duct Furnace	
HED 75 – 150	18
HED 200 – 300	20
FOA Unit Heater	22
UHRS Unit Heater	26
UHCM Unit Heater.....	27
FOA Venting Guidelines	29
SEP, HED, FSA, UHCM, UHRS Venting Guidelines.....	30
SEP, FSA, FOA Conversion Kits – LP and NG.....	31-32
UHRS, UHCM Conversion Kits – LP and NG	32

CUH



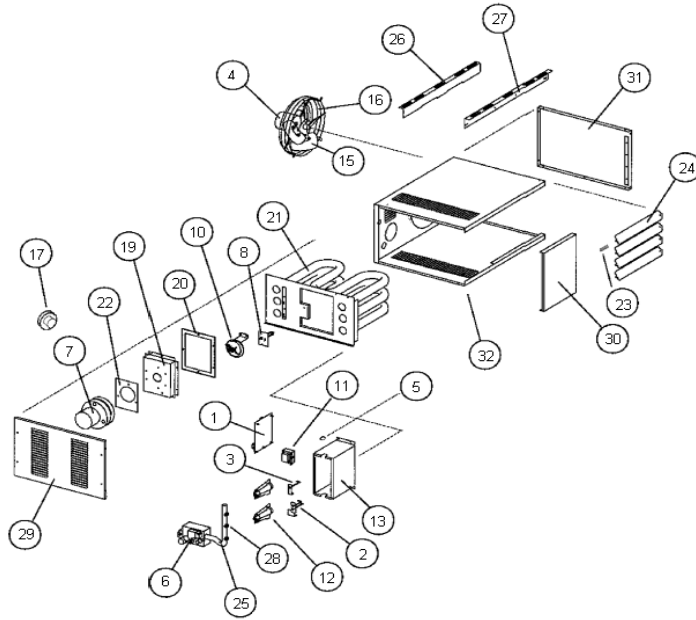
CUH UNIT HEATER

DRAWING NUMBER	DESCRIPTION	PART NUMBER	CUH30					CUH45					CUH60		CUH75		
			1	2	3	4	5	1	2	3	4	5	1	2	1	2	
1	CONTROL BOARD																
		176777500		X					X				X			X	
		76722700				X					X		X				X
2	ELECTRODE/SPARK IGNITOR																
		176738700		X					X				X			X	
		76714900				X					X		X				X
3	ELECTRODE/FLAME SENSOR																
		76738800		X					X				X			X	
		76715000				X					X		X				X
4	FAN MOTOR (BLOWER MOTOR)																
		76791000		X					X								
		176700242											X				X
5	FLAME ROLLOUT SWITCH																
		176740200											2				2
		176739900			X					X							
6	GAS VALVE (LP)																
		76717500			X					X			X				X
6	GAS VALVE (NAT)																
		76714600			X					X			X				X
28	ORIFICE (LP)																
		176717200			2					3			4				5
	Straight thread	176717200			2					3			4				5
	Tapered thread	76724000				2					3		4				5
28	ORIFICE (NAT)																
		176712200			2					3			4				5
	Straight thread	176712200			2					3			4				5
	Tapered thread	76723700				2					3		4				5
Not Shown	IGNITION LEAD (WIRE, CABLE)																
		76715100			X					X			X				X
Not Shown	Wiring Harness																
		176701653				X					X		X				X
7	INDUCED DRAFT MOTOR ASSEMBLY(includes motor, housing, & blower wheel)																
		76739200			X					X			X				X
8	LIMIT SWITCH																
		76739700			X					X			X				X
10	PRESSURE SWITCH																
		176777300															X
		76777400			X					X			X				
11	TRANSFORMER																
		76715500			X					X			X				X

CUH UNIT HEATER

DRAWING NUMBER	DESCRIPTION	PART NUMBER	CUH30					CUH45					CUH60		CUH75		
			1	2	3	4	5	1	2	3	4	5	1	2	1	2	
12	BURNER																
		76739500			2				3				4				5
13	BURNER BOX																
		176773700			X				X								
15	FAN BLADE																
		176739100							X								
		176739600			X												
		176740000											X				
		176701184															X
16	FAN GUARD																
		176740100											X				X
17	FLUE ADAPTER																
		176737800											X				X
		176735000			X				X								
19	FLUE BOX																
		176740400			X				X								
		176741200											X				
		176741900															X
20	FLUE BOX GASKET																
		176739300			X				X								
		176740300											X				X
21	HEAT EXCHANGER																
		176700314			X												
		176781500							X								
		176784000											X				
		176768700															X
22	INDUCED DRAFT GASKET																
		176708800			X				X				X				X
23	LOUVER SPRING																
		76713500			4					4			6				6
24	LOUVER VANE (BEIGE)																
		176741100			4					4			6				6
26	MOUNTING BRACKET, BACK																
		176750900			X				X				X				X
27	MOUNTING BRACKET, FRONT																
		176750800			X				X				X				X

FSA



FSA UNIT HEATER

DRAWING NUMBER	DESCRIPTION	PART NUMBER	FSA30	FSA45	FSA60	FSA75
1	CONTROL BOARD					
		76722700			X	
2	ELECTRODE/SPARK IGNITER					
		76714900			X	
3	ELECTRODE/FLAME SENSOR					
		76715000			X	
4	FAN MOTOR (BLOWER MOTOR)					
		76791000	X	X		
		176700242			X	X
5	FLAME ROLLOUT SWITCH					
		176740200			2	2
		176739900	X	X		
6	GAS VALVE (LP)					
		76717500			X	
6	GAS VALVE (NAT)					
		76714600			X	
28	ORIFICE (LP)					
		76724000	2	3	4	5
28	ORIFICE (NAT)					
		76723700	2	3	4	5
Not Shown	IGNITION LEAD					
		76715100			X	
7	INDUCED DRAFT MOTOR ASSEMBLY (includes motor, housing, & blower wheel)					
		76739200			X	
8	LIMIT SWITCH					
		76739700			X	
10	PRESSURE SWITCH					
		176777300				X
		176777400	X	X	X	
11	TRANSFORMER					
		76715500			X	
12	BURNER					
		76739500	2	3	4	5
13	BURNER BOX					
		176773700	X	X		

FSA UNIT HEATER

DRAWING NUMBER	DESCRIPTION	PART NUMBER	FSA30	FSA45	FSA60	FSA75
15	FAN BLADE					
		176739100		X		
		176739600	X			
		176740000			X	
		176701184				X
16	FAN GUARD					
		176740100			X	X
17	FLUE ADAPTER					
		176737800			X	X
		176735000	X	X		
19	FLUE BOX					
		176740400	X	X		
		176741200			X	
		176741900				X
20	FLUE BOX GASKET					
		176739300	X	X		
		176740300			X	X
21	HEAT EXCHANGER					
		176700314	X			
		176781500		X		
		176784000			X	
		176768700				X
22	INDUCED DRAFT GASKET					
		176708800	X	X	X	X
23	LOUVER SPRING					
		76713500	4	4	6	6
24	LOUVER VANE (BEIGE)					
		176741100	4	4	6	6
26	MOUNTING BRACKET, BACK					
		176750900			X	
27	MOUNTING BRACKET, FRONT					
		176750800			X	
Not Shown	FLAME SENSOR WIRE					
		176738500			X	
Not Shown	WIRE HARNESS					
		176701653	X	X	X	X

SEP UNIT HEATER

SEP 60 - 145

DRAWING NUMBER	DESCRIPTION	PART NUMBER	SEP 60					SEP 90					SEP 100	SEP 115					SEP 145						
			1	2	3	4	5	1	2	3	4	5		1	2	3	4	5	1	2	3	4	5		
	ALUMINIZED STEEL HEAT EXCHANGER																								
	STAINLESS STEEL HEAT EXCHANGER					0	1					0	1					0	1					0	1
7	INDUCED DRAFT MOTOR ASSEMBLY (includes motor, housing, & blower wheel)																								
		76746100	X					X						X					X						
		76714300A																							
		76738400																							
		76714200			X					X			X			X					X			X	
8	LIMIT SWITCH																								
		176716600																							
		76716400		X					X				X		X					X			X		
		176716700																							
		176716500																							
9	AUXILIARY LIMIT (ROLLOUT)																								
		176717100																							
10	PRESSURE SWITCH																								
		176776900																							
		176777000																							
		176777100							X				X		X										
		176777200																					X		
		176777300		X						X			X							X					
11	TRANSFORMER																								
		76715500		X					X				X		X					X			X		
12	BURNER																								
		76711200		4					6																
		76711300											4		4								5		
15	FAN BLADE																								
		176710700		X					X																
		176776400											X		X								X		
16	FAN GUARD																								
		176711000		X					X																
17	FLUE ADAPTER																								
		176735000		X																					
		76708500							X				X		X								X		
		76708600																							
		76708700																							
19	FLUE BOX																								
		176709100	X						X																
		176718900						X					X												
		176709200													X										
		176709300																					X		
		176721300																							
		176709500																							
		176736600																							
		176709600																							
		176736700																							
		176709700																							
		176709800																							
		176709900																							

** Temporarily Unavailable

SEP UNIT HEATER

SEP 60 - 145

DRAWING NUMBER	DESCRIPTION	PART NUMBER	SEP 60					SEP 90					SEP 100	SEP 115					SEP 145						
			1	2	3	4	5	1	2	3	4	5		1	2	3	4	5	1	2	3	4	5		
	ALUMINIZED STEEL HEAT EXCHANGER																								
	STAINLESS STEEL HEAT EXCHANGER					0	1					0	1					0	1					0	1

20	FLUE BOX GASKET																							
		176710000				X					X													
		176710100											X				X							X
		176710200																						
		176710300																						

22	INDUCED DRAFT MOTOR GASKET																							
		176708800				X					X		X				X							X
		176708900**																						

Not Shown	SILICONE TUBING																							
		176742001				X					X		X				X							X

21	HEAT EXCHANGER (ALUMINIZED)																							
		176707300				X																		
		176707400									n/a													
		176707500											X				X							
		176707600																						X
		176707700																						
		176707800																						
		176707900																						
		176708000																						

21	HEAT EXCHANGER (STAINLESS)																							
		176711400					X																	
		176711600											X				X							
		176711700																						X
		176708100																						
		176708200																						
		176711900																						
		176708300																						

23	LOUVER SPRING																							
		76713500					7					7						7						7

24	LOUVER VANE, BEIGE																							
		176713100					7					7												
		176713200											7					7						7
		176713300																						

25	MANIFOLD																							
		176724700							X*		X													
		176724400										X			X*		X							
		176724500																			X*	X		
		176724600																						
		176724100																						
		176724200																						
		176724300																						

* For these models, you also need to order tapered thread orifices. (All new manifolds have tapered threads and will not fit with older orifices having straight threads).

** Temporarily Unavailable

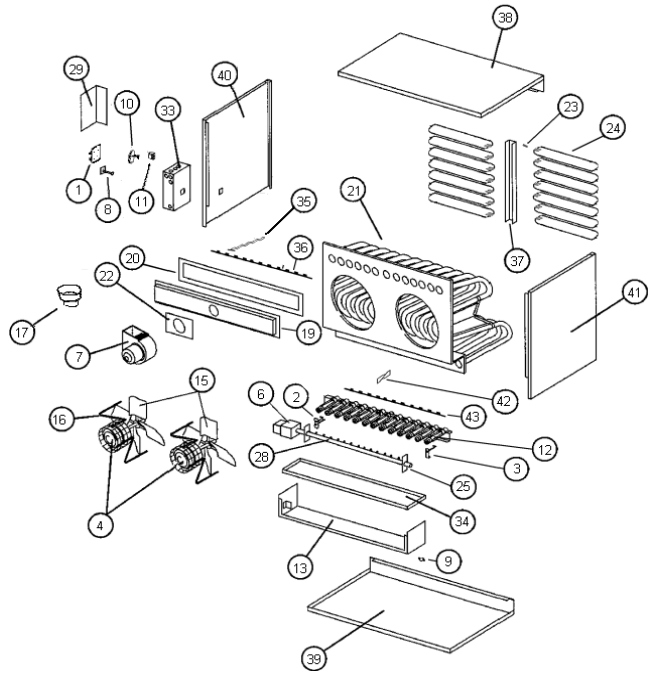
SEP UNIT HEATER

SEP 60 - 145

DRAWING NUMBER	DESCRIPTION	PART NUMBER	SEP 60					SEP 90					SEP 100	SEP 115					SEP 145						
			1	2	3	4	5	1	2	3	4	5		1	2	3	4	5	1	2	3	4	5		
	ALUMINIZED STEEL HEAT EXCHANGER																								
	STAINLESS STEEL HEAT EXCHANGER					0	1					0	1					0	1					0	1
29	CONTROL BOX COVER	176712600		X					X				X		X								X		
33	CONTROL BOX	176712500		X					X				X		X								X		
35	FLUE BAFFLE	176710400											4		4									5	
37	LOUVER BRACKET	176714100																							
42	TURBULATOR FOR NOX	176717800											4		4									5	
Not Shown	FAN TIMER	100002477	X					X						X									X		
Not Shown	GAS PRESSURE SWITCH	76717700		X					X				X		X								X		
Not Shown	IGNITION WIRE	176727300	X					X						X					X				X		
		76715100			X					X			X			X								X	
		76715200																							
Not Shown	FLAME SENSOR WIRE	100000547	X					X						X					X						
		100000548																							
		176738500				X				X		X					X							X	
		176738600																							
Not Shown	WIRING HARNESS	176701653				X				X		X					X							X	
		176717000																							
		176701654																							

** Temporarily Unavailable

SEP



SEP UNIT HEATER

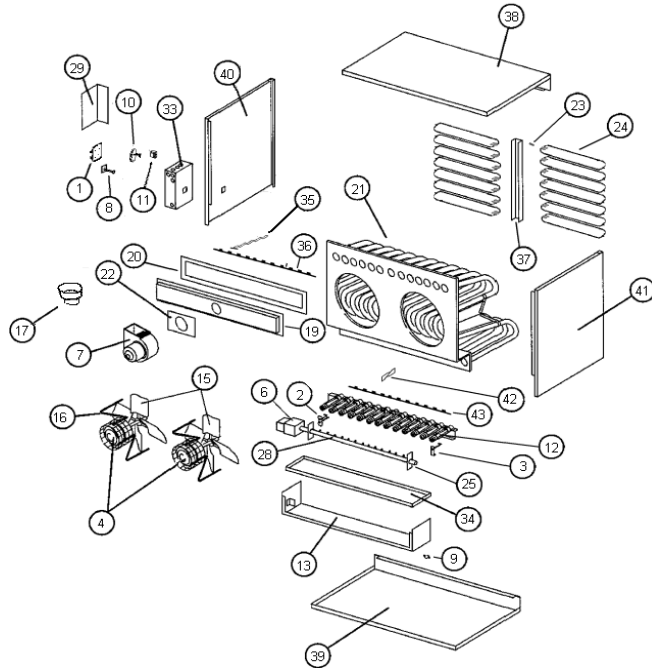
SEP 175 - 290

DRAWING NUMBER	DESCRIPTION	PART NUMBER	SEP 175					SEP 200			SEP 230					SEP 250		SEP 290					
	ALUMINIZED STEEL HEAT EXCHANGER		1	2	3	4	5	1	2	3	1	2	3	4	5			1	2	3	4	5	
	STAINLESS STEEL HEAT EXCHANGER				0	1	1	2	3					0	1							0	1

1	CONTROL BOARD		10000240	X						X						X							
			176777500		X		X				X						X						X
			76722700			X		X				X	X										
2	ELECTRODE/SPARK IGNITER		76714900	X				X			X				X								
	3	ELECTRODE/FLAME SENSOR		76715000	X			X			X			X			X						
4	FAN MOTOR (BLOWER MOTOR)		176700242	X				X			2			2									2
	6	GAS VALVE (LP)		76717500	X			X								X							
6		GAS VALVE (NAT)		176717600							X				X								X
	28	ORIFICE (NAT)		76714600	X			X															
			76714800							X				X									X
28	ORIFICE (LP)		176712300		6						8						10						
		Straight thread	76723000				6							8									10
		Tapered thread	176712200																				
		Straight thread	76723700																				
		Tapered thread	176712400					6															
		Straight thread	76723400												10								
		Tapered thread	76723600											6									
28	ORIFICE (LP)		176717200														10						
		Straight thread	76724000																				
		Tapered thread	176723500																				
		Tapered thread	76717300		6						8							10					
		Straight thread	76723100				6							8									10
		Tapered thread	176717400					6															
		Straight thread	176723300							6													
	Tapered thread																						

** Temporarily Unavailable

SEP



SEP UNIT HEATER

SEP 300 - 400

DRAWING NUMBER	DESCRIPTION	PART NUMBER	SEP 300				SEP 345				SEP 400				
			1	2	3	4	5	6	1	2	3	4			
	ALUMINIZED STEEL HEAT EXCHANGER														
	STAINLESS STEEL HEAT EXCHANGER						0	1				1	2	3	4
1	CONTROL BOARD														
		10000240					X								
		176777500							X				X		
		76722700	X							X					X
2	ELECTRODE/SPARK IGNITER														
		76714900	X				X						X		
3	ELECTRODE/FLAME SENSOR														
		76715000	X				X						X		
4	FAN MOTOR (BLOWER MOTOR)														
		176700242	2				2						2		
6	GAS VALVE (LP)														
		76717500													
		176717600	X				X						X		
6	GAS VALVE (NAT)														
		76714600													
		76714800	X				X						X		
28	ORIFICE (NAT)														
	Straight thread	176712300					12								
	Tapered thread	76723000								12					
	Straight thread	176712200													
	Tapered thread	76723700													
	Straight thread	176712400											12		
	Tapered thread	76723400	12												
	Tapered thread	76723600													12
28	ORIFICE (LP)														
	Straight thread	176717200													
	Tapered thread	76724000													
	Tapered thread	176723500	12												
	Straight thread	76717300					12								
	Tapered thread	76723100								12					
	Straight thread	176717400											12		
	Tapered thread	176723300													12

** Temporarily Unavailable

SEP UNIT HEATER

SEP 300 - 400

DRAWING NUMBER	DESCRIPTION	PART NUMBER	SEP 300	SEP 345						SEP 400			
				1	2	3	4	5	6	1	2	3	4
	ALUMINIZED STEEL HEAT EXCHANGER			1	2	3	4	5	6	1	2	3	4
	STAINLESS STEEL HEAT EXCHANGER							0	1	1	2	3	4
7	INDUCED DRAFT MOTOR ASSEMBLY (includes motor, housing, & blower wheel)												
		76746100											
		76714300A	X										
		76738400				X					X		
		76714200											
8	LIMIT SWITCH												
		176716600				X							
		76716400											
		176716700	X								X		
		176716500											
9	AUXILIARY LIMIT (ROLLOUT)												
		176717100	X			X					X		
10	PRESSURE SWITCH												
		176776900	X			X							
		176777000									X		
		176777100											
		176777200											
		176777300											
11	TRANSFORMER												
		76715500	X			X					X		
12	BURNER												
		76711200											
		76711300	12			12					12		
15	FAN BLADE												
		176710700											
		176776400	X			X					X		
16	FAN GUARD												
		176711000											
17	FLUE ADAPTER												
		176735000											
		76708500											
		76708600	X		X								
		76708700				X					X		
19	FLUE BOX												
		176709100											
		176718900											
		176709200											
		176709300											
		176721300											
		176709500											
		176736600											
		176709600											
		176736700											
		176709700	X										
		176709800				X							
		176709900									X		

** Temporarily Unavailable

SEP UNIT HEATER

SEP 300 - 400

DRAWING NUMBER	DESCRIPTION	PART NUMBER	SEP 300	SEP 345						SEP 400				
				1	2	3	4	5	6	1	2	3	4	
	ALUMINIZED STEEL HEAT EXCHANGER													
	STAINLESS STEEL HEAT EXCHANGER							0	1	1	2	3	4	
20	FLUE BOX GASKET													
		176710000												
		176710100												
		176710200												
		176710300	X				X					X		
22	INDUCED DRAFT MOTOR GASKET													
		176708800												
		176708900**	X				X					X		
Not Shown	SILICONE TUBING													
		176742001	X				X					X		
21	HEAT EXCHANGER (ALUMINIZED)													
		176707300												
		176707400												
		176707500												
		176707600												
		176707700												
		176707800												
		176707900												
		176708000	X				X					X		
21	HEAT EXCHANGER (STAINLESS)													
		176711400												
		176711600												
		176711700												
		176708100												
		176708200												
		176711900												
		176708300	X						X			X		
23	LOUVER SPRING													
		76713500	14				14					14		
24	LOUVER VANE, BEIGE													
		176713100												
		176713200												
		176713300												
25	MANIFOLD													
	* For these models, you also need to order tapered thread orifices. (All new manifolds have tapered threads and will not fit with older orifices having straight threads).	176724700												
		176724400												
		176724500												
		176724600												
		176724100												
		176724200												
		176724300	X					X*		X		X*		X

** Temporarily Unavailable

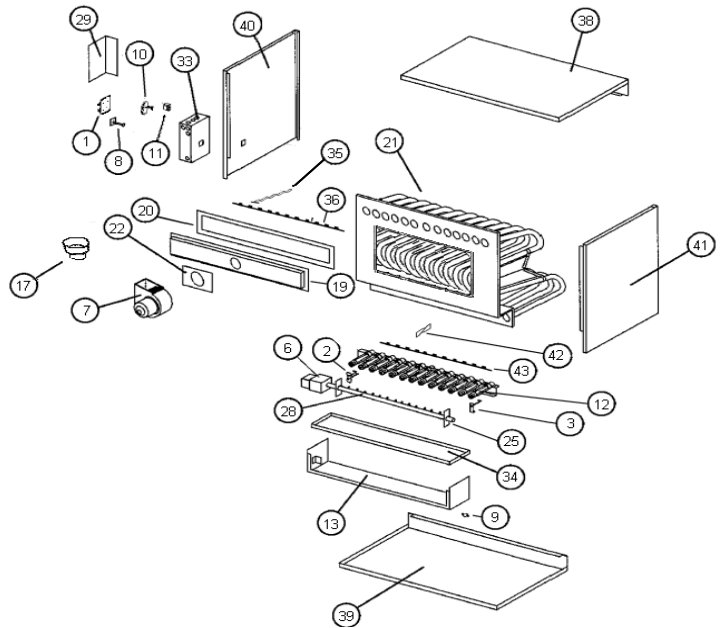
SEP UNIT HEATER

SEP 300 - 400

DRAWING NUMBER	DESCRIPTION	PART NUMBER	SEP 300	SEP 345						SEP 400				
				1	2	3	4	5	6	1	2	3	4	
	ALUMINIZED STEEL HEAT EXCHANGER													
	STAINLESS STEEL HEAT EXCHANGER							0	1	1	2	3	4	
29	CONTROL BOX COVER	176712600	X				X					X		
33	CONTROL BOX	176712500	X				X					X		
35	FLUE BAFFLE	176710400	12				12					12		
37	LOUVER BRACKET	176714100	X				X					X		
42	TURBULATOR FOR NOX	176717800	12				12					12		
Not Shown	FAN TIMER	100002477			X									
Not Shown	GAS PRESSURE SWITCH	76717700												
Not Shown	IGNITION WIRE	176727300			X									
		76715100												
		76715200	X				X					X		
Not Shown	FLAME SENSOR WIRE	100000547			X									
		100000548												
		176738500												
		176738600	X							X				X
Not Shown	WIRING HARNESS	176701653												
		176717000					X					X		
		176701654	X							X				X

** Temporarily Unavailable

HED



HED DUCT FURNACE HED 75 - 150

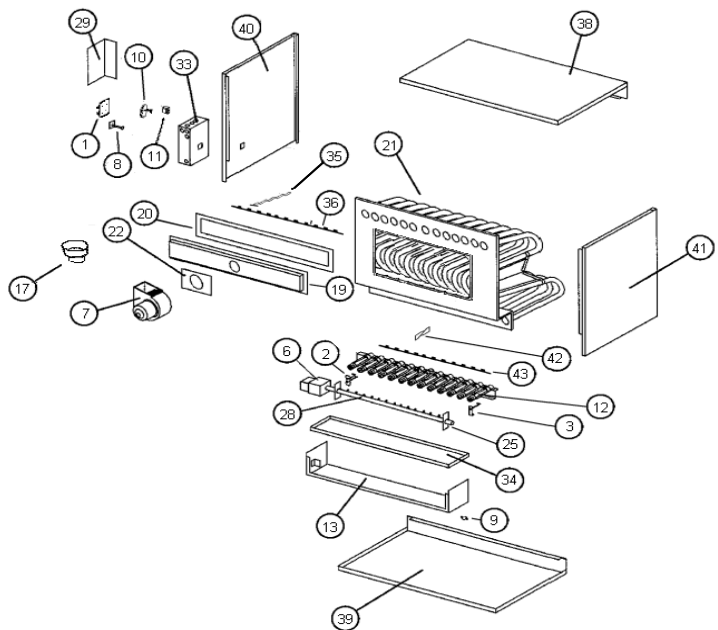
DRAWING NUMBER	DESCRIPTION	PART NUMBER	HED75			HED100			HED125			HED150		
			1	2	3	1	2	3	1	2	3	1	2	3
1	CONTROL BOARD													
		100000240	X			X			X			X		
		176777500		X			X			X			X	
		76722700			X			X			X			X
2	ELECTRODE/SPARK IGNITER													
		76714900		X			X			X			X	
3	ELECTRODE/FLAME SENSOR													
		76715000		X			X			X			X	
6	GAS VALVE (NAT)													
		76714600		X			X			X			X	
		76714800												
28	ORIFICE (NAT)													
	Straight thread	176719400		6										
	Tapered thread	176723900			6									
	Straight thread	176719500				4			5			6		
	Tapered thread	76723400					4			5			6	
7	INDUCED DRAFT MOTOR ASSEMBLY (includes motor, housing, & blower wheel)													
		76746100		X			X			X			X	
		76714300A												
8	LIMIT SWITCH													
		176716600		X										
		76716400												
		176716700												
		176716500					X			X			X	
9	AUXILIARY LIMIT													
		176717100												
10	PRESSURE SWITCH													
		176777100		X										
		176722500					X						X	
		176722600								X				
		176776900												
11	TRANSFORMER													
		76715500		X			X			X			X	
12	BURNER													
		76711300					4			5			6	
		76711200		6										
17	FLUE ADAPTER													
		76708500		X			X			X			X	
		76708600												

HED DUCT FURNACE HED 75 - 150

DRAWING NUMBER	DESCRIPTION	PART NUMBER	HED75			HED100			HED125			HED150		
			1	2	3	1	2	3	1	2	3	1	2	3
19	FLUE BOX	176718900**					X							
		176721500**												
		176721300												
20	FLUE BOX GASKET	176710000		X										
		176710100					X			X				
		176710200											X	
		176710300												
21	HEAT EXCHANGER (ALUM)	176719700		X										
		176719800					X							
		176719900								X				
		176720000											X	
		176720100												
		176720200												
		176720300												
21	HEAT EXCHANGER (STAINLESS)	176720400		X										
		176720500					X							
		176720600								X				
		176720700											X	
		176720800												
		176720900												
		176721000												
22	INDUCED DRAFT GASKET	176708800		X			X			X			X	
		176708900**												
25	MANIFOLD	176724700		X *	X									
	* For these models, you also need to order tapered thread orifices. (All new manifolds have tapered threads and will not fit with older orifices having straight threads).	176724400					X *	X						
		176724500								X *	X			
		176724600											X *	X
		176724100												
		176724200												
		176724300												
29	CONTROL BOX COVER	176712600		X			X			X			X	
33	CONTROL BOX	176712500		X			X			X			X	
Not Shown	FAN TIMER	100002477	X				X			X			X	
Not Shown	IGNITION WIRE	176727300	X				X			X			X	
		76715100			X			X			X			X
		76715200												
Not Shown	FLAME SENSOR WIRE	100000547	X				X			X			X	
		100000548												
		176738500			X			X			X			X
		176738600												

** Temporarily Unavailable

HED



HED DUCT FURNACE HED 200 - 300

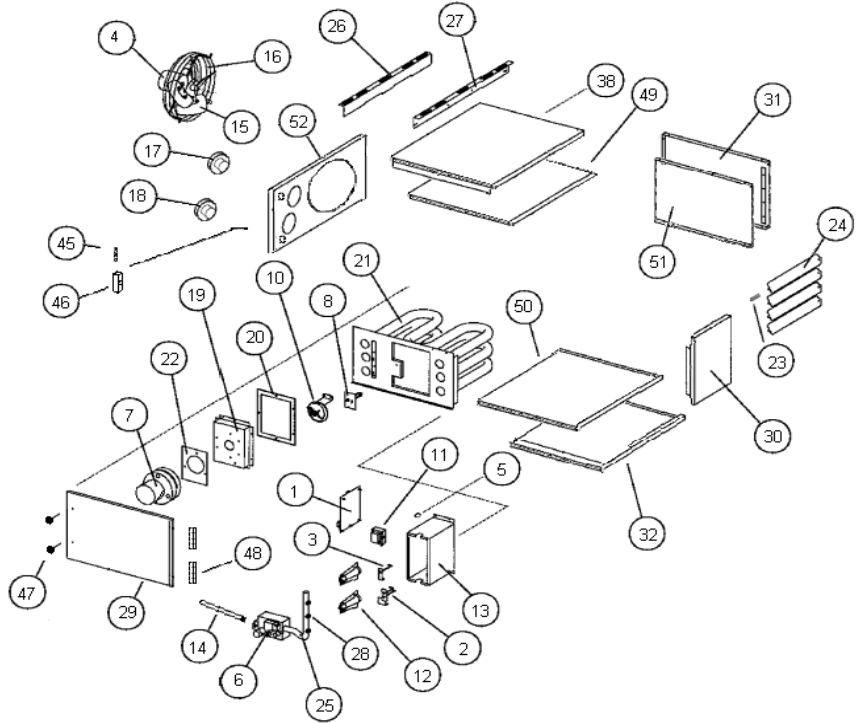
DRAWING NUMBER	DESCRIPTION	PART NUMBER	HED200			HED250			HED300		
			1	2	3	1	2	3	1	2	3
1	CONTROL BOARD										
		10000240	X			X			X		
		17677500		X			X			X	
		76722700			X			X			X
2	ELECTRODE/SPARK IGNITER										
		76714900		X			X			X	
3	ELECTRODE/FLAME SENSOR										
		76715000		X			X			X	
6	GAS VALVE (NAT)										
		76714600									
		76714800		X			X			X	
28	ORIFICE (NAT)										
	Straight thread	176719400									
	Tapered thread	176723900									
	Straight thread	176719500		8			10			12	
	Tapered thread	76723400			8			10			12
7	INDUCED DRAFT MOTOR ASSEMBLY (includes motor, housing, & blower wheel)										
		76746100									
		76714300A		X			X			X	
8	LIMIT SWITCH										
		176716600									
		76716400								X	
		176716700					X				
		176716500		X							
9	AUXILIARY LIMIT										
		176717100		X			X			X	
10	PRESSURE SWITCH										
		176777100									
		176722500									
		176722600									
		176776900		X			X			X	
11	TRANSFORMER										
		76715500		X			X			X	
12	BURNER										
		76711300		8			10			12	
		76711200									
17	FLUE ADAPTER										
		76708500									
		76708600		X			X			X	

HED DUCT FURNACE HED 200 - 300

DRAWING NUMBER	DESCRIPTION	PART NUMBER	HED200			HED250			HED300		
			1	2	3	1	2	3	1	2	3
19	FLUE BOX	176718900**									
		176721500**								X	
		176721300		X							
20	FLUE BOX GASKET	176710000									
		176710100									
		176710200									
		176710300		X			X			X	
21	HEAT EXCHANGER (ALUM)	176719700									
		176719800									
		176719900									
		176720000									
		176720100		X							
		176720200					X				
		176720300								X	
21	HEAT EXCHANGER (STAINLESS)	176720400									
		176720500									
		176720600									
		176720700									
		176720800		X							
		176720900					X				
		176721000								X	
22	INDUCED DRAFT GASKET	176708800									
		176708900**		X			X			X	
25	MANIFOLD	176724700									
	* For these models, you also need to order tapered thread orifices.	176724400									
	(All new manifolds have tapered threads and will not fit with older orifices having straight threads).	176724500									
		176724600									
		176724100		X *	X		X *	X			
		176724200								X *	X
		176724300									
29	CONTROL BOX COVER	176712600		X			X			X	
33	CONTROL BOX	176712500		X			X			X	
Not Shown	FAN TIMER	100002477	X				X			X	
Not Shown	IGNITION WIRE	176727300	X				X			X	
		76715100									
		76715200			X			X			X
Not Shown	FLAME SENSOR WIRE	100000547									
		100000548	X				X			X	
		176738500									
		176738600			X			X			X

** Temporarily Unavailable

FOA



FOA UNIT HEATER

DRAWING NUMBER	DESCRIPTION	PART NUMBER	FOA 45	FOA 60	FOA 75	FOA 100	FOA 125	FOA 150	FOA 200	FOA 250	FOA 300
1	CONTROL BOARD										
		76722700					X				
	WIRE HARNESS 6-PIN										
		176701653					X				
45	24V TERMINAL BOARD										
		176700060					X				
	DOOR SWITCH										
		76729900A					X				
2	ELECTRODE/SPARK IGNITER										
		176700050					X				
	WIRE, IGNITION cable										
		76715100					X				
3	ELECTRODE/FLAME SENSOR										
		176700051					X				
	WIRE, FLAME SENSE										
		176738500					X				
4	FAN MOTOR (BLOWER MOTOR)										
		76791000	X								
		176700242		X	X	X	X			X	2
		176700242						X	X		
5	FLAME ROLLOUT SWITCH										
		176739900	1								
		176740200		2	2	1	1				
6	GAS VALVE (LP)										
		76717500				X					
6	GAS VALVE (NAT)										
		76714600				X					
		176700265								X	
28	ORIFICE (LP)										
		76724000	3	4	5						
		176723500				4	5	6		10	
		76723100						7		11	

FOA UNIT HEATER

DRAWING NUMBER	DESCRIPTION	PART NUMBER	FOA 45	FOA 60	FOA 75	FOA 100	FOA 125	FOA 150	FOA 200	FOA 250	FOA 300
28	ORIFICE (NAT)	76723700	3	4							
		176700281			5						
		76723400				4	5				
		176700263						6			11
		76723600							7		
		76723400								10	
7	INDUCED DRAFT MOTOR ASSEMBLY (includes motor, housing, & blower wheel)	76739200	X	X	X						
		76714300A				X	X	X	X	X	X
8	LIMIT SWITCH	76739700	X	X	X						
		76716400				X	X	X	X		X
		176716500								X	
10	PRESSURE SWITCH	176777400	X	X							
		176722600				X					
		176700096					X				
		176776900						X	X		
		176700236									X
11	TRANSFORMER	76715500					X				
12	BURNER INSHOT	76739500	3	4	5						
		76711300				4	5	6	7	10	11
13	BURNER BOX	176773700	X								
15	FAN BLADE	176739100	X								
		176740000		X							
		176701184			X						
		176776400				X	X			X	X
		176700250						X	X		
16	FAN GUARD	176740100			X						
		176700059				X	X				
		176700249						X	X		

FOA UNIT HEATER

DRAWING NUMBER	DESCRIPTION	PART NUMBER	FOA 45	FOA 60	FOA 75	FOA 100	FOA 125	FOA 150	FOA 200	FOA 250	FOA 300
17	INLET AIR ADAPTER	176700279	X								
		176700231						X			
Not Shown	INLET AIR ADAPTER GASKET	176700062						X			
18	FLUE ADAPTER	176735000	X								
		176737800		X	X						
		76708600				X	X	X	X	X	
		76708700									X
19	FLUE BOX	176700033				X					
		176700034					X				
		176700247						X			
		176700258								X	
20	FLUE BOX GASKET	176739300	X								
		176740300		X	X						
21	HEAT EXCHANGER ASSEMBLY	176700067	X								
		176700069		X							
		176700053				X					
		176700054					X				
		176700232						X			
		176700233							X		
		176700234								X	
		176700235									X
22	INDUCED DRAFT GASKET	176739300	X								
		176708800		X	X						
		176708900**				X	X	X	X	X	X
23	LOUVER SPRING	76713500	4	6	6	6	6	8	8	12	12
24	LOUVER VANE (BEIGE)	176741100	4	6	6						
		176713100				6	6	8	8	12	12
		** Temporarily Unavailable									
26	MOUNTING BRACKET, BACK	176750900	X	X	X						
27	MOUNTING BRACKET, FRONT	176750800	X	X	X						
Not Shown	SIGHT GLASS	176700042						X			
		** Temporarily Unavailable									

UHRS

UHRS UNIT HEATER

DESCRIPTION	PART NUMBER	UHRS30	UHRS45	UHRS60	UHRS75	UHRS90	UHRS105
CONTROL BOARD	176701586	X	X	X	X	X	X
WIRING HARNESS	176792900	X	X				
	176793000			X	X		
	176793100					X	X
WIRING HARNESS, TRANSFORMER	176702200	X	X	X	X	X	X
ELECTRODE/FLAME SENSOR	176701611	X					
ELECTRODE/SPARK IGNITER	176701587	X					
FAN MOTOR (BLOWER MOTOR)	176701588	1	1				
	176701612			1	1		
	176701590					1	1
FLAME ROLLOUT SWITCH	176700252	X					
	176701591		X			X	X
	176701592			X	X		
GAS VALVE (LP)	176701593	X	X	X	X	X	X
GAS VALVE (NAT)	176701594	X	X	X	X	X	X
ORIFICE (LP)	176701595	2	3	4	5	7	7
ORIFICE (NAT)	176701596	2	3	4	5	7	7
IGNITION LEAD	176701597	X	X	X	X	X	X
INDUCED DRAFT MOTOR ASSEMBLY (includes motor, housing, & blower wheel)	176701598	X*	X*	X	X	X	X
	176795005 *After Ser # 7120K10000	X*	X*				
LIMIT SWITCH	176701599	X	X	X			
	176701630				X		X
	176795004					X	
PRESSURE SWITCH	176701601	X	X	X			X
	176701602				X		
	176701603					X	
TRANSFORMER	176701604	X	X	X	X	X	X
FAN BLADE	176701605	1	1				
	176701606			1	1		
	176701607					1	1
FAN GUARD	176701608	1	1				
	176701609			1	1		
	176701610					1	1
LOUVER SPRING	176701613	X	X	X	X	X	X
LOUVER VANE	176793400	3	3	5	5	7	7
MOUNTING BRACKET	176700255	2	2	2	2	2	2
POWER/THERMO TERMINAL	176792800	X	X	X	X	X	X
BURNER	176727400	X					
	176727500		X				
	176727600			X			
	176727700				X		
	176727800					X	
	176727900						X
MANIFOLD	176728900	X					
	176728800		X				
	176729100			X			
	176729000				X		
	176729300					X	
	176729200						X
ALUMINIZED STEEL HEAT EXCHANGER	176730200	X					
	176730300		X				
	176730400			X			
	176730500				X		
	176730600					X	
	176730700						X
POWER/THERMO TERMINAL	176792800	X	X	X	X	X	X

UHCM

UHCM UNIT HEATER

DESCRIPTION	PART NUMBER	UHCM 125	UHCM 150	UHCM 175	UHCM 200	UHCM 250	UHCM 300	UHCM 350	UHCM 400
CONTROL BOARD	176701586	X	X	X	X	X	X	X	X
WIRING HARNESS	176793500	X	X	X	X				
	176793600					X	X	X	X
ELECTRODE/SPARK IGNITER	176701615	X	X	X	X	X	X	X	X
ELECTRODE/FLAME SENSOR	176701616	X	X	X	X	X	X	X	X
IGNITION LEAD	176793700	X	X	X	X	X	X	X	X
FAN MOTOR (BLOWER MOTOR)	176701617	1	1			2	2		
	176701618			1	1			2	2
GAS VALVE (LP)	176701593	X	X	X	X				
	176701620					X	X	X	X
GAS VALVE (NAT)	176701594	X	X	X	X				
	176701622					X	X	X	X
ORIFICE (LP)	176701623	5	6	7	8				
	176701624					10	12	14	16
ORIFICE (NAT)	176701625	5	6	7	8				
	176701626					10	12	14	16
INDUCED DRAFT MOTOR ASSEMBLY (includes motor, housing, & blower wheel)	176701627	X	X						
	176701628			X	X	X	X	X	X
FLAME ROLLOUT SWITCH	176700251	X	X	X	X	X	X	X	X
LIMIT SWITCH	176701599	X	X	X					
	176701630				X				
	176701631					X	X	X	X
	176701632	X							
PRESSURE SWITCH	176701633		X						
	176701634			X	X	X			
	176701635						X		
	176701636							X	
	176701637								X
TRANSFORMER	176701604	X	X	X	X	X	X	X	X
FAN BLADE	176701648	1	1	1	1	2	2	2	2
	176701639			1	1			2	2
FLUE ADAPTER	176701585			X	X	X	X		
	176701647							X	X
LOUVER SPRING	176701613	X	X	X	X	X	X	X	X
LOUVER VANE	176794000	9	9			18	18		
	176794100			9	9				
	176794200							18	18
POWER/THERMO TERMINAL	176792800	X	X	X	X	X	X	X	X

UHCM

UHCM UNIT HEATER

DESCRIPTION	PART NUMBER	UHCM 125	UHCM 150	UHCM 175	UHCM 200	UHCM 250	UHCM 300	UHCM 350	UHCM 400
BURNER	176728000	X							
	176728100		X						
	176728200			X					
	176728300				X				
	176728400					X			
	176728500						X		
	176728600							X	
	176728700							X	
MANIFOLD	176729500	X							
	176729400		X						
	176729700			X					
	176729600				X				
	176730100					X			
	176730000						X		
	176729900							X	
	176729800							X	
ALUMINIZED STEEL HEAT EXCHANGER	176730800	X							
	176731000		X						
	176731200			X					
	176731400				X				
	176731600					X			
	176731800						X		
	176732000							X	
	176732200							X	
Stainless Steel Heat Exchanger	176730900	X							
	176731100		X						
	176731300			X					
	176731500				X				
	176731700					X			
	176731900						X		
	176732100							X	
	176732300							X	

FOA - VENTING GUIDELINES

	Model Size (1000s BTUH)	Termination Type	Flue		Inlet air		Approved Caps	
			Material	Size	Material	Size	Flue	Inlet air
			FOA Horizontal Commercial Applications	45	Two pipe	Single wall	3"	Single wall
Cat. III	Cat. III							
Concentric	Single wall	* 3"		Single wall	* 3"	Concentric vent kit (4"/7")		
	Cat. III							
60, 75	Two pipe	Single wall		4"	Single wall	4"	Tee	Tee
		Cat. III					Cat. III	
Concentric	Single wall	4"	Single wall	4"	Concentric vent kit (4"/7")			
	Cat. III							
100, 125	Two pipe	Single wall	5"	Single wall	4"	Tee	Tee	
		Cat. III				Cat. III		
Concentric	Not available							
150,200,250	Two pipe	Single wall	5"	Single wall	4"	Tee	Tee	
		Cat. III				Cat. III		
Concentric	Single wall	5"	Single wall	** 4"	Concentric vent kit (5"/8")			
	Cat. III				Not Available			
300	Two pipe	Single wall	6"	Single wall	4"	Tee	Tee	
		Cat. III				Cat. III		
Concentric	Not available							

	Model Size (1000s BTUH)	Termination Type	Flue		Inlet air		Approved Caps	
			Material	Size	Material	Size	Flue	Inlet air
			FOA Vertical Commercial Applications	45	Two Pipe	Single wall	3"	Single wall
Double Wall (B-1)								
Concentric	Single wall	* 3"		Single wall	* 3"	Concentric vent kit (4"/7")		
	Double Wall (B-1)							
60, 75	Two Pipe	Single wall		4"	Single wall	4"	Any UL approved caps	
		Double Wall (B-1)						
Concentric	Single wall	4"	Single wall	4"	Concentric vent kit (4"/7")			
	Double Wall (B-1)							
100, 125	Two Pipe	Single wall	5"	Single wall	4"	Any UL approved caps		
		Double Wall (B-1)						
Concentric	Single wall	5"	Single wall	** 4"	Concentric vent kit (5"/8")			
	Double Wall (B-1)							
150,200,250	Two Pipe	Single wall	5"	Single wall	4"	Any UL approved caps		
		Double Wall (B-1)						
Concentric	not available							
300	Two Pipe	Single wall	6"	Single wall	4"	Any UL approved caps		
		Double Wall (B-1)						
Concentric	not available							

	Model Size (1000s BTUH)	Termination Type	Flue		Inlet air		Approved Caps	
			Material	Size	Material	Size	Flue	Inlet air
			FOA Horizontal Residential Applications	45	Two pipe	Cat. III	* 3"	Single wall
60, 75	Two pipe	Cat. III	4"	Single wall	4"	Cat. III	Tee	
100, 125	Two pipe	Cat. III	5"	Single wall	4"	Cat. III	Tee	

	Model Size (1000s BTUH)	Termination Type	Flue		Inlet air		Approved Caps	
			Material	Size	Material	Size	Flue	Inlet air
			FOA Vertical Residential Applications	45	Two Pipe	Double Wall (B-1)	3"	Single wall
Concentric	Double Wall (B-1)	* 3"			Single wall	* 3"	Concentric vent kit (4"/7")	
60, 75	Two Pipe	Double Wall (B-1)		4"	Single wall	4"	Any UL approved caps	
	Concentric	Double Wall (B-1)		4"	Single wall	4"	Concentric vent kit (4"/7")	
100, 125	Two Pipe	Double Wall (B-1)		5"	Single wall	4"	Any UL approved caps	
	Concentric	Double Wall (B-1)		5"	Single wall	** 4"	Concentric vent kit (5"/8")	

* Field supplied 3" to 4" increaser required for connection to concentric adapter

** Field supplied 4" to 5" increaser required for connection to concentric adapter

Note: Vent cap (for two pipe venting systems) 2 required per system

SEP, UHCM, HED - VENTING GUIDELINES

SEP, UHCM & HED Commercial Applications Only *	Model Size (1000s BTUH)	Horizontal Venting			Vertical Venting		
		Material	Size	Approved Caps	Material	Size	Approved Caps
75 - 150	Single wall	4"	Tee	Single wall	4"	Any UL approved caps	
	Cat. III		Cat. III	Double Wall (B-1)			
175 - 300	Single wall	5"	Tee	Single wall	5"	Any UL approved caps	
	Cat. III		Cat. III	Double Wall (B-1)			
345 - 400	Single wall	6"	Tee	Single wall	6"	Any UL approved caps	
	Cat. III		Cat. III	Double Wall (B-1)			

* SEP and HED unit heaters are not approved for residential applications.

FSA, UHRS - VENTING GUIDELINES

FSA, UHRS Commercial Applications	Model Size (1000s BTUH)	Horizontal Venting			Vertical Venting		
		Material	Size	Approved Caps	Material	Size	Approved Caps
30, 45	Single wall	3"	Tee	Single wall	3"	Any UL approved caps	
	Cat. III		Cat. III	Double Wall (B-1)			
60, 75	Single wall	4"	Tee	Single wall	4"	Any UL approved caps	
	Cat. III		Cat. III	Double Wall (B-1)			

FSA, UHRS Residential Applications	Model Size (1000s BTUH)	Horizontal Venting			Vertical Venting		
		Material	Size	Approved Caps	Material	Size	Approved Caps
30, 45	Cat. III	3"	Cat. III	Double Wall (B-1)	3"	Any UL approved caps	
60, 75	Cat. III	4"	Cat. III	Double Wall (B-1)	4"	Any UL approved caps	

LP FUEL CONVERSION KITS

LP Conversion Kit Part # (not available for SEP 60, 90)	Used On Models	Includes	Ship Weight
165296401	SEP 100	1 Honeywell Spring Kit, 1 Spring Kit, 6 #52 Tapered Orifices, 1 LP Pressure Switch, 1 A-Nipple LP Pressure Switch, 1 Elbow-LP Pressure Switch, 1 B-Nipple LP Pressure Switch, 6 Turbulators	2 lbs.
165295202**	SEP 115, 145 & 175	1 393691 Honeywell Spring Kit, 1 92-0836 White Rogers Spring Kit, 6 #52 Tapered Orifices (Part # 76723100), 1 LP Pressure Switch, 1 A-Nipple LP Pressure Switch, 1 Elbow-LP Pressure Switch, 1 B-Nipple LP Pressure Switch, 6 Turbulators, 6 Turbulator Clips	2 lbs.
165295203*	SEP 230, 290 & 345	1 LP Gas Valve (Part # 76717600), 12 #52 Tapered Orifices (Part # 76723100), 12 Turbulators, 12 Turbulator Clips	3 lbs.
165295205	SEP-200	1 393691 Honeywell Spring Kit, 1 92-0836 White Rogers Spring Kit, 6 .068 Tapered Orifices (Part # 76723300)	2 lbs.
165296403**	SEP-250, 300	1 LP Gas Valve (Part # 76717600), 12 #53 Tapered Orifices (Part # 76723500), 12 Turbulators, 12 Turbulator Clips	3 lbs.
165295206	SEP-400	1 LP Gas Valve (Part # 76717600), 12 Tapered Orifices (Part # 76723300)	2 lbs.
165295204	CUH/FSA (all models)	1 393691 Honeywell Spring Kit (Part # 76757900), 1 92-0836 White Rogers Spring Kit (Part # 76757900), 1 Robert Shaw Spring Kit (Part #76768500), 5 #56 Tapered Orifices (Part # 76724000)	2 lbs.
165296405	FOA 45, 60 & 75	5 #56 Orifices (Part # 76724000), 1 White Rogers Spring Kit (Part # 76759100)	2 lbs.
165336303**	FOA 100, 125, 150, 250	10 #53 Orifices (Part #76723500), 1 Honeywell Spring Kit (Part # 76759100)	2 lbs.
165336304	FOA 200 & 300	11 # 52 Orifices (Part # 76723100), 1 Honeywell Spring Kit (Part #76759100)	2 lbs.

** Temporarily Unavailable

LP Kits are not designed for and should not be used on HED duct furnaces.

LP & NG Kits have tapered thread orifices and will not fit older models with straight threads.

NG FUEL CONVERSION KITS & MOUNTING BRACKETS

NG Conversion Kit Part # (not available for SEP 90, 100, 250, 300, and CUH units)	Used On Models	Includes	Ship Weight
Kit not yet available. Components are listed at right.	SEP 100	6 Tapered Orifices (Part # 76723400), 1 Natural Gas Valve (Part # 76714600)	TBD
160000001	SEP 115, 145, 175	6 Tapered Orifices (Part # 76723000), 1 Natural Gas Valve (Part # 76714600)	2 lbs.
160000002**	SEP 200	7 Tapered Orifices (Part # 76723600), 1 Natural Gas Valve (Part # 76714600)	2 lbs.
160000003	SEP 230, 290, 345	12 Tapered Orifices (Part # 76723000), 1 Natural Gas Valve (Part # 76714800)	2 lbs.
Kit not yet available. Components are listed at right.	SEP 250, 300	12 Tapered Orifices (Part # 76723400), 1 Natural Gas Valve (Part # 76714800)	TBD
160000004	SEP 400	12 Tapered Orifices (Part # 76723300), 1 Natural Gas Valve (Part # 76714800)	2 lbs.

** Temporarily Unavailable

LP & NG Kits have tapered thread orifices and will not fit older models with straight threads.

Description	Part #	Used On Models	Ship Weight
Mounting Bracket Kit	100001381	SEP 230 thru SEP400 and HED 200 thru 300 models	9 lbs.

** Temporarily Unavailable

UHRS & UHCM

FUEL CONVERSION KITS

LP Kits

Description	Kit Part #	Altitudes		Used On Models
		US	CANADA	
LP Conversion Kit	176701643	0 - 5,000ft	0 - 7,500ft	UHRS (All Models)
LP High Altitude Conversion Kit	176795200	5,000 - 8,000ft	n/a	
LP High Altitude Conversion Kit	176795300	8,000 - 10,000ft	0 - 7,500ft	
LP High Altitude Conversion Kit	176795400	n/a	7,501 - 9,500ft	
LP Conversion Kit	176701641	0 - 5,000ft	0 - 7,500ft	UHCM 125 - 200
LP High Altitude Conversion Kit	176795500	5,000 - 9,000ft	7,501 - 9,500ft	
LP High Altitude Conversion Kit	176795600	9,001 - 10,000ft	n/a	
LP Conversion Kit	176794300	0 - 3,000ft	0 - 4,500ft	UHCM 250- 400
LP High Altitude Conversion Kit	176794400	3,001 - 5,000ft	4,501 - 7,500ft	
LP High Altitude Conversion Kit	176794500	5,001 - 7,000ft	7,501 - 9000ft	
LP High Altitude Conversion Kit	176794600	7,001 - 9,000	n/a	
LP High Altitude Conversion Kit	176794700	9,001 - 10,000	n/a	

Natural Gas Kits

Description	Kit Part #	Altitudes		Used On Models
		US	CANADA	
NG Conversion Kit	176701644	0 - 5,000ft	0 - 7,500ft	UHRS (All Models)
NG High Altitude Conversion Kit	176795700	5,000 - 7,000ft	7,501 - 9,500ft	
NG High Altitude Conversion Kit	176795800	7,000 - 10,000ft	n/a	
NG Conversion Kit	176701645	0 - 4,000ft	0 - 6,500ft	UHCM 125 - 200
NG High Altitude Conversion Kit	176795900	4,000 - 8,000	6,501 - 7,500ft	
NG High Altitude Conversion Kit	176796000	8,000 - 10,000	n/a	
NG Conversion Kit	176794800	0 - 5,000ft	0 - 7,500ft	UHCM 250 - 400
NG High Altitude Conversion Kit	176794900	5,000 - 8,000	7,501 9 9,500ft	
NG High Altitude Conversion Kit	176795100	8,000 - 10,000	n/a	

