

PREFERRED VENDOR MOTOR DATA SHEET

Motor Part Number: S063ZZJTE8081012H

ACME PN: 922781

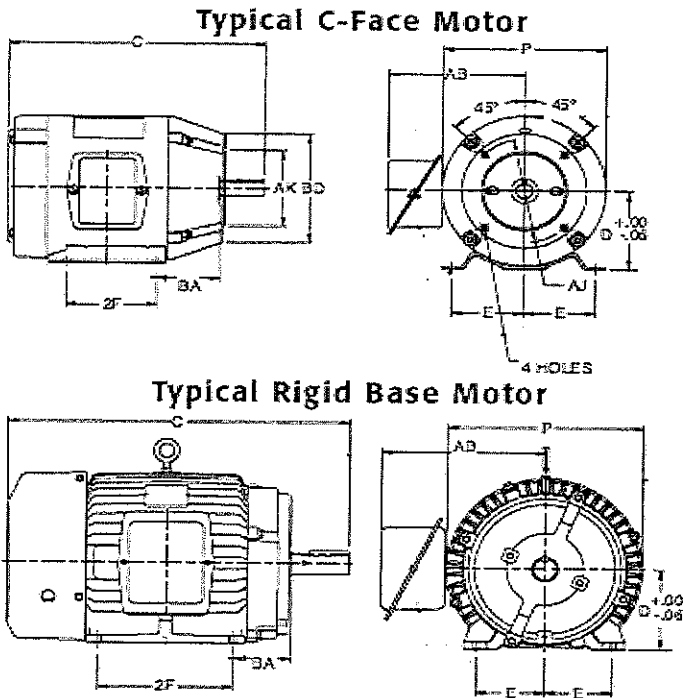
Nameplate Data

Horsepower: 1/2 & 1/6	Motor Control Compatibility: --
Volts: 115	Efficiency: --
Phase: 1	Efficiency Percent: 65.5 & 51.5
Motor Speed: 1740 & 1160	Ambient Temperature: 40 C
Enclosure: TEAO	Frame: 56
Amps: 7.2 & 4.0	WR2: --
Hertz: 60	Nameplate RPM: 1740 & 1160
LRA: 38.8	Insulation Class: B
SFA: 7.8 & 4.1	Nominal RPM(60Hz): 1740 & 1160
Power Factor: --	Synch RPM(60Hz): --
Service Factor: 1.15	Nominal RPM(50Hz): --
Small Motor Rule: --	Synch RPM(50Hz): --

Features

Bearing Type: Ball	Motor Plug: --
Motor Rotation: CCW Lead End Rev	Base: --
VSM: --	Duty: Continuous Air Over
Windings: --	End Bell Drain: --
Thermal Overload: --	F2: --
NEMA Code: --	

Dimensions and Weight



Ab: --	Ba: --	BD: --
V: --	D: 3.500	AK: --
L: --	E: --	AJ: --
C: 10.798	F: --	P: 6.500
	H: --	BF: --

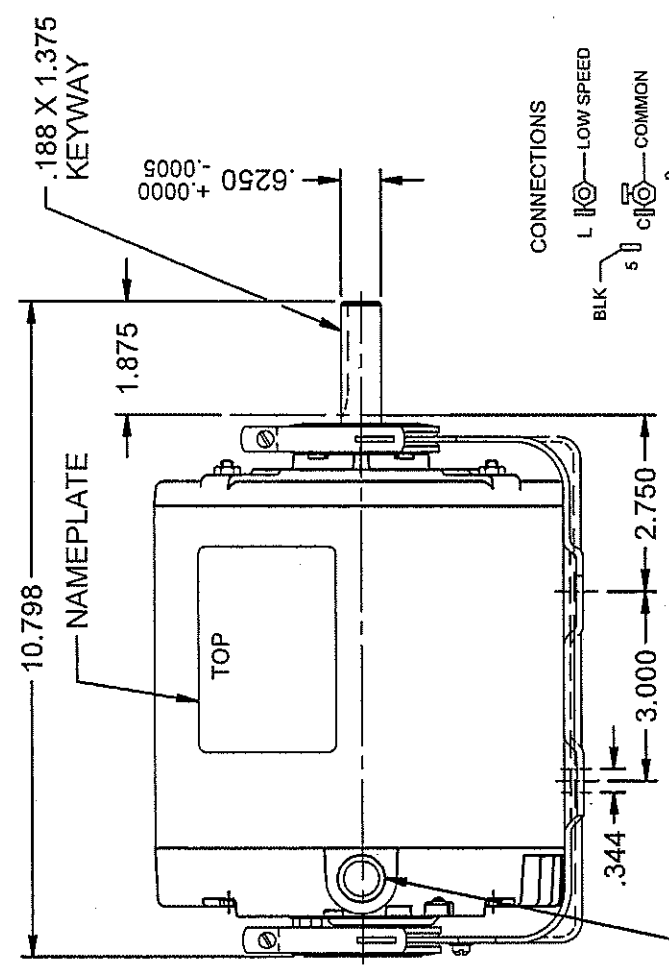
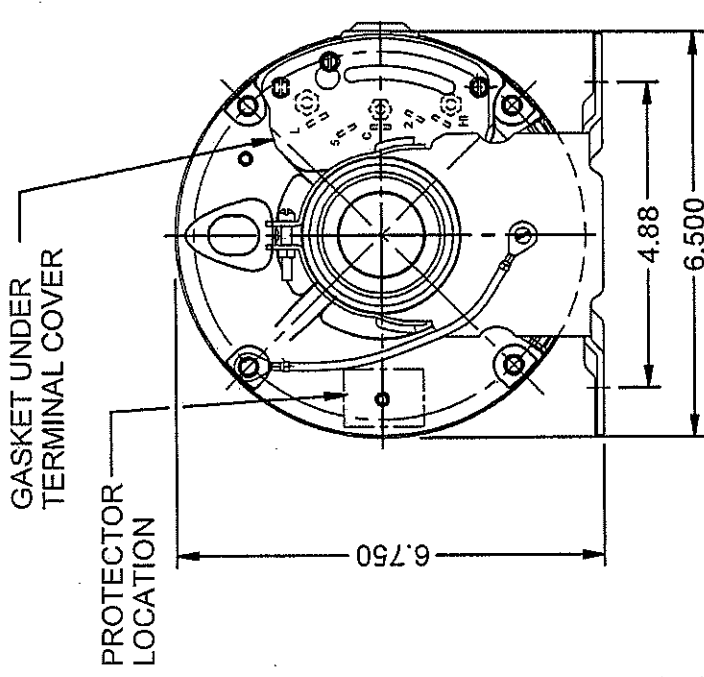
Unit Weight: 28.0 lbs

Keyway: 1.875

Shaft Diameter: 0.625

Metric Keyway:

Motor Note:



CONNECTIONS
 L — LOW SPEED
 5 — COMMON
 RED — HIGH SPEED
 TO REVERSE ROTATION
 INTERCHANGE RED & BLK LEADS

ACME Approved
A. Salazar
8/7/17

1/2 SIZE CONDUIT

SHAFT KEY TAPED
 TO SIDE OF MOTOR

REV. B

NIDEC MOTOR CORPORATION 03-Aug-17		CUSTOMER		HP	VOLTS	AMPS	HZ	RPM	ROTATION	CUSTOMER P/N
MODEL	REF	S63ZJTE-8081	ACME ENGINEERING	1/2 / 1/6	115	7.2/4.0	60	1740/1160	CW DR END REV.	922781
SHEET NUMBER	REV	1 of 1	B	REVISION RECORD FOR: E29386						
REVISION DATE		UPDATE CUSTOMER PART NUMBER TO 922781								
ISSUED BY		O. CASTANEDA								
REVIEWED BY		K. MORT								
ENGINEER-APPROVED		T. BOSSALLER								
TITLE		ASSEMBLED VIEW		CODE	V01		ITEM NO.	789117		SIZE
ALL DIMENSIONS ARE FOR REFERENCE ONLY UNLESS TOLERANCE IS GIVEN		NIDEC MOTOR CORPORATION		INFORMATION DISCLOSED ON THIS DOCUMENT IS CONSIDERED PROPRIETARY AND SHALL NOT BE REPRODUCED OR DISCLOSED WITHOUT WRITTEN CONSENT OF NIDEC MOTOR CORPORATION						
REV. B		BALL BEARING		NIDEC MOTOR CORPORATION						
V01_NMCA (MAR-2011)		SOLIDEDGE								

AIR OVER MOTOR CONNECTIONS

MODEL 1 CAT 2
 RP 3 RPM 4 SF 5
 V 6 HZ 7 PH 8 CODE 9
 A 10 SFA 11 W 12 AMB 13 °C 14

TIME RATING 15 NML CLASS 16
 THERMALLY PROTECTED
 ACME PT. NO. 922781
 THIS MOTOR IS PERMANENTLY LUBRICATED BALL BEARING. NO FURTHER LUBRICATION REQUIRED.
 NIDEC MOTOR CORPORATION
 WWW.NIDECMOTOR.COM

MFG. NO. 50
 27

922781

TITLE	SLOT	INSERT NO	DATA	TITLE	SLOT	INSERT NO	DATA
MODEL	1		S63ZZJTE-8081		15A		THERMALLY PROTECTED
CAT.	2				15B		ACME PT. NO. 922781 [6]
H.P.	3		1/2 / 1/6	LUB. INSTR.	15C	187915A000	
R.P.M.	4		1740/1160		16	187049A000	C.S.A.
S.F.	5		1.15	CSA IDENT. NO.	17	186987A000	SEE INSERT DWG.
V.	6		115		18		
HZ	7		60		19		
PH	8		1	MFG. NO.	20		
CODE	9		L		21		SEE INSERT DWG.
A	10		7.2 / 4.0	CONN. INSTR. CONNECTIONS	22		
S.F.A.	11		7.8 / 4.1		23	276645A000	
AMB°C	12		40		24A		
TIME RATING	13		CONT.		24B		AIR OVER MOTOR
INSUL. CLASS	14		B	PROT. CODE	25		WARNING
					26		8A360
					27	SEE CHART	SEE CHART

WARNING: MOTOR MUST BE PROPERLY GROUNDED AND TERMINAL COVER MUST BE IN PLACE TO REDUCE POTENTIAL ELECTRICAL SHOCK